

NHS Scotland: Repeatable Rooms

Improving Quality, Value & Sustainability through Standardisation



Introduction

Health Facilities Scotland in conjunction with representation from several NHS Boards around the country have been meeting as a Short Life Working Group (SLWG) to develop a Repeatable Rooms Strategy for specific key rooms commonly utilised across the NHS Scotland Estate.

Through the ProCure21+ framework in England, a number of Repeatable Rooms have been developed. These provide a set layout and standardised set of components, that through repetition, deliver various savings in relation to construction cost. This Report aims to replicate this ProCure21+ document but with specifics related to systems, procedures and experience within NHS Scotland.

It is intended that this document will expand as further Repeatable Rooms are considered and developed through to a design conclusion.

Repeatable Room Layouts

Each Room has been developed following thorough discussion and debate throughout the course of the SLWG. The proposed layouts are evidence based and informed by experiences of each of the participating NHS Boards. Consultation with staff, manual handling and occupational therapy teams, end users, as well as architectural input has been sought in order to produce rooms with an improved function and environment. These arrangements are supported by Health Facilities Scotland and NHS Scotland.

NHS boards consulted with their individual Infection Control teams and comments were taken into consideration when developing the room layouts.

Room Layout Reviews

Room layouts will be subject to a review process and may be updated in response to post-occupancy evaluations and reviews, changes to models of care, or new technologies. It is intended that the post-occupancy evaluation will follow the format agreed for the P22 framework, with findings then shared with the Department of Health in England.

Principals of Application

NHS clients using the HFS3 Framework should identify their requirement for Repeatable Rooms and Standardised Components when completing the Works Information. It is recommended that the implementation requirement should form part of the briefing information that goes to the framework providers or others initially. This places an obligation on the PSCPs, PSCs, Hub or others, along with their team members to incorporate Repeatable Rooms into initial scheme designs.

Where not specified, the Repeatable Room arrangements and Standardised Components will be offered by the PSCP as the baseline design and specification, as they represent the best value for quality and cost.

Benefits

Repeatable Room arrangements have been designed to assist in the design and procurement of common and key rooms proposed in healthcare facilities across NHS Scotland. It is intended that utilising a repeatable design, with limited project specific changes in components will deliver a quality room output which improves on safety, reduces infection control issues and provides better value through improved life cycle costs.

Local Considerations

It should be noted that each repeatable room should be viewed on a project-by-project basis. Specific matters may vary between boards and circumstances. Each room and project should be subjected to local risk assessments to ensure compliance with local guidance, including infection and prevention policies.

Similarly, it is recognised that some of the fixtures, fittings and positions may not be suitable for all patient groups. Again, the repeatable rooms should be viewed on a project specific basis and any changes considered to best respond to the patient group to be catered for.

Guidance

This document and the repeatable rooms illustrated should be read in conjunction with all relevant guidance documentation, included, but not limited to SHTM, SHPN, Technical Standards etc. This will allow consideration of matters such as safety, fire compartmentation, acoustics, thermal and energy, to be considered and incorporated into the application of these repeatable rooms within the overall building arrangement.

Repeatable Rooms Matrix

The matrix below illustrates the current Repeatable Rooms that have been developed and the layouts agreed. The matrix suggests suitable healthcare buildings and locations where these rooms could be utilised.

It is intended that this matrix will be expanded as more Repeatable Rooms are proposed and their layouts agreed. This will produce a live document that will continue to be updated to provide the best value and benefits NHS Scotland.

The rooms within this document were developed at a specific point in time. Designs may require to be updated to reflect relevant policies and guidance as these are issued or revised.

Should readers note any areas of the report that they deem to be superseded, or contrary to any changes in guidance, these should be confirmed back to HFS and the SLWG team to allow the document to be updated and revised accordingly.

	New Build	Refurbishment	Primary	Community	Acute	Private	Mental Health Adult Acute
Adult Single Bedroom nested, with Outboard En-Suite (right hand unassisted En-Suite transfer)	•	•		•	•	•	
Adult Single Bedroom nested, with Outboard En-Suite (left hand unassisted En-Suite transfer)	•	•		•	•	•	
Adult Single Bedroom nested, with Inboard En-Suite (right hand unassisted En-Suite transfer)	•	•		•	•	•	
Adult Single Bedroom nested, with Inboard En-Suite (left hand unassisted En-Suite transfer)	•	•		•	•	•	
En-Suite nested (right hand unassisted transfer)	•	•		•	•	•	
En-Suite nested (left hand unassisted transfer)	•	•		•	•	•	
Consultation / Exam Room Three-sided Couch access – examination couch by door	•	•	•	•	•	•	

Figure 1.1: Repeatable Rooms Matrix

Adult Single Bedroom, nested

The Adult Single Bedroom has been developed in one key arrangement – that of a nested arrangement with back-to-back En-Suites.

Within this Repeatable Room, there are 4 variations:

Adult Single Bedroom nested, with Outboard En-Suite, for right hand unassisted En-Suite WC transfer.

Adult Single Bedroom nested, with Inboard En-Suite, for right hand unassisted En-Suite WC transfer.

Adult Single Bedroom nested, with Outboard En-Suite, for left hand unassisted En-Suite WC transfer.

Adult Single Bedroom nested, with Inboard En-Suite, for left hand unassisted En-Suite WC transfer.

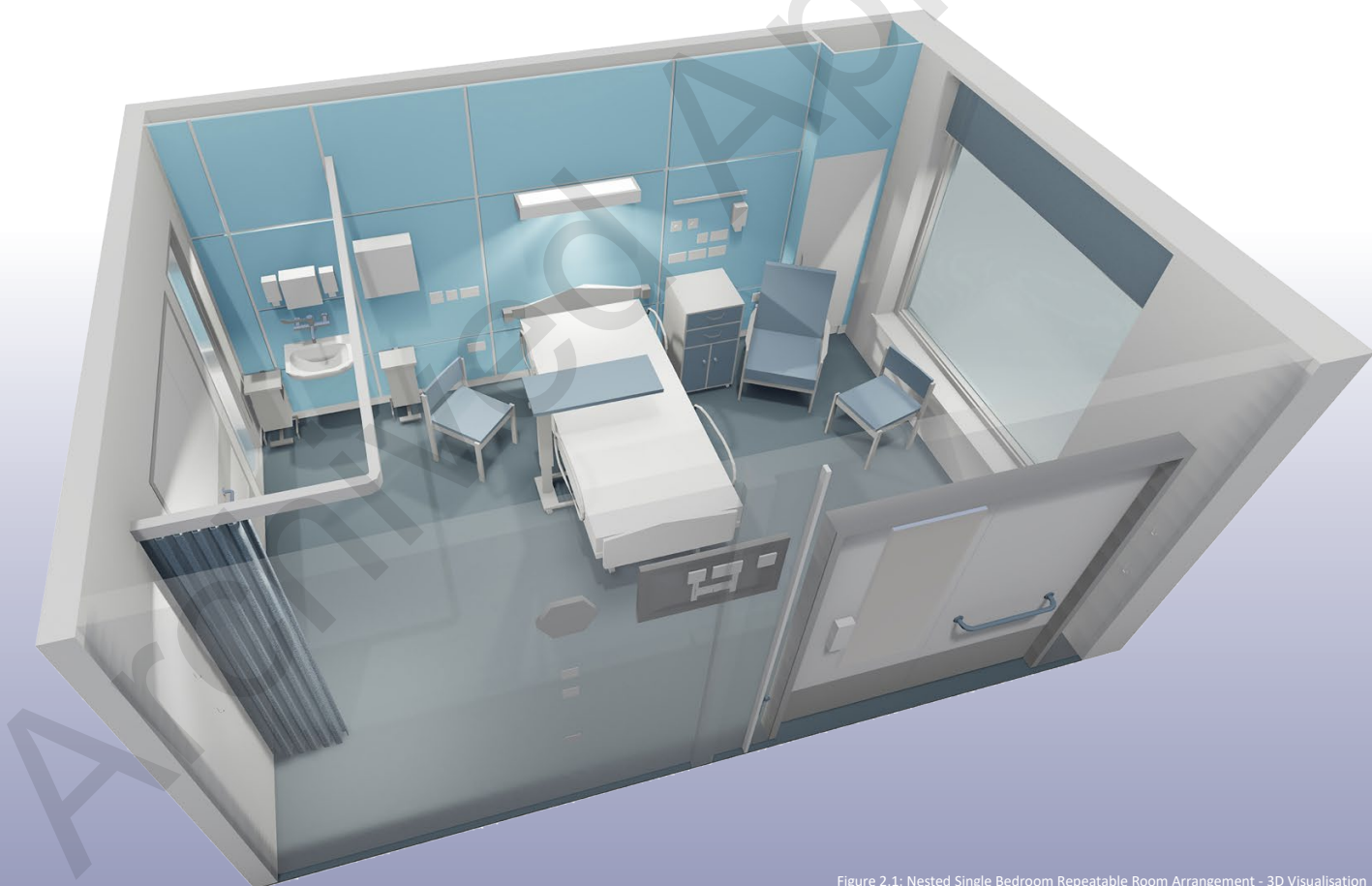


Figure 2.1: Nested Single Bedroom Repeatable Room Arrangement - 3D Visualisation

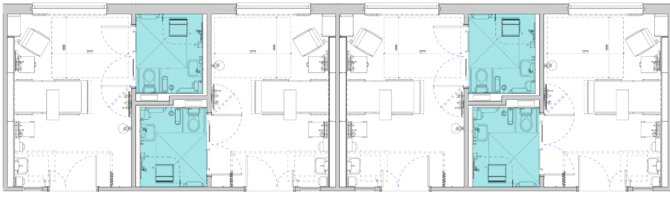


Figure 2.2: Repeated Nested Arrangement - All right-hand unassisted WC transfer

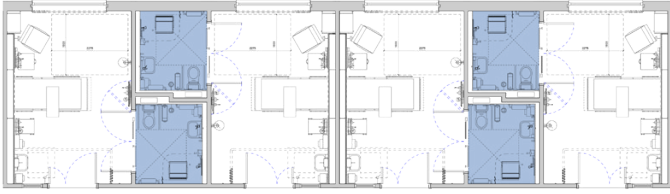


Figure 2.3: Repeated Nested Arrangement - All left-hand unassisted WC transfer

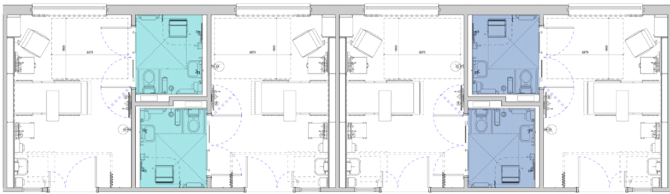


Figure 2.4: Mirrored Nested Arrangement - 50/50 split of right and left-hand unassisted WC transfer

The number of variations for this room arrangement is required to ensure an equal split of right and left-handed unassisted WC transfer is provided within the En-Suites to each department. Figures 2.1 and 2.2 adjacent demonstrate how a simple block repetition of 2no Single Bedrooms, with either right or left-handed nested En-Suites would lead to an imbalance in accommodation across a ward or department.

Figure 2.4 shows that Single Bedrooms with a nested En-Suite arrangement should be planned and viewed as a repeatable 4-bed cluster, providing a 50/50 split of left and right-handed unassisted transfer En-Suites across a department. This arrangement is critical in providing the variety of rooms required to treat those with varying levels of mobility.

Room Description

The Adult Single Bedroom has been designed to an area of 19m². Each room has been designed with the majority of equipment and components being as standard. Each room has been designed in accordance with relevant Health Building Notes (HBN) and Scottish Health Planning Notes (SHPN).

The nested, back-to-back arrangement maximises the floor area, whilst offering opportunities for excellent natural daylight, observation or social contact within the ward. These characteristics are facilitated by not having an inboard or outboard En-Suites located within a quadrant of the room itself.

The Bedroom (and adjacent En-Suite) has been designed in accordance with standard brick setting-out dimensions, giving a width of 3700mm. This allows the arrangement to be compatible across a number of construction types.

A full length IPS wall is proposed along the bed head side of the room, allowing the concealed integration of the clinical wash hand basin, lighting and bed head services (medical gases, suction). All supplies and services can be hidden behind this panel, which also allows for an ease of maintenance. Additionally, limited projections into the bedroom area and subsequent floor finishing details will assist with cleaning regimes. It will be important to ensure sufficient structural support and patressing is designed into the bedhead IPS to allow all proposed services and fittings to be accommodated.

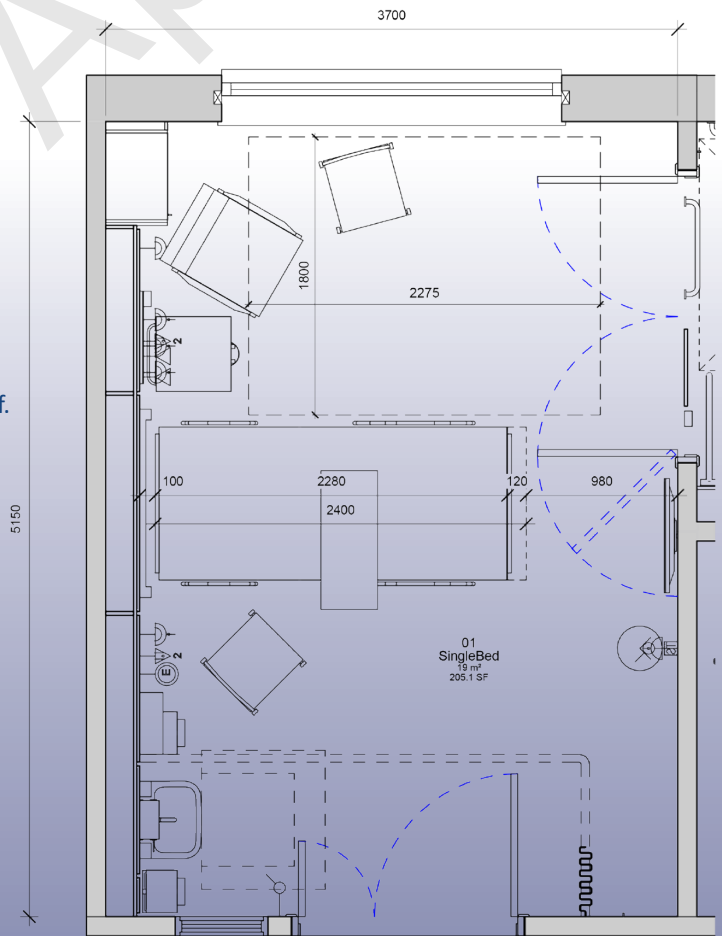


Figure 2.5: Nested Single Bedroom Repeatable Room Arrangement (not to scale)

Key Features

- The nested En-Suite increases the overall width and depth of room available for patient space.
- Observation and social contact maintained with views of the bed through to the Ward corridor beyond.
- External views, and daylight, are maximised.
- Family Space provided at the bed side.
- Patient monitoring is maximised.
- Sight line of WC is available from the bed head.
- An Activity Space of 2275 x 1800mm is provided, which is in excess of the dimensions required for 90% of self-propelled and electric sampled wheelchair users to turn 180°, in accordance with BS8300-2: 2018. For reference, these dimensions are 2275 x 1625mm, as p.198 of BS8300-2: 2018.

Several design features may be added to the designs depending on local Board and project specific decisions. These include, but are not limited to:

- Wardrobe zone built into the bedhead IPS wall, including the size, type, internal arrangement.
- Ceiling-mounted overhead hoists.
- Loose Furniture Options.
- Patient Entertainment System.

In addition, there will be alternative project specific design options around the main fabric of the room, the external glazing, and the internal entrance doors and vision screens to the room. These are noted at the end of this section.

Room, wall, IPS and finishes colours should be considered on a project specific basis, in line with the use of the room. For example, when used correctly, feature walls allow those with dementia to make sense of a space. However, consideration should be given to the extent and colour of any feature walls, as some colours may not be suitable for the patient group or care being provided.



Figure 2.6: Nested Single Bedroom Repeatable Room - Internal 3D Visualisation

Clinical Benefits

3600mm x 3700mm bed space, reflects research by the Medical Architecture Research Unit at London South Bank University and the Health and Care Infrastructure Research and Innovation Centre at Loughborough University, indicating this space to be optimal in accommodating a full range of clinical activities taking place at the bedside or in the individual's bed space, together with operating equipment at the bedside. The provision of this space is in line with the requirements noted within SHPN 04-01.

Clinical Wash Hand Basin is located in a highly visible and convenient location, immediately accessible upon entry into the room. Mounted upon the bedhead IPS wall, this allows all services to be contained and managed behind these panels, giving a flexibility of incoming and outgoing service connections.

Bedhead IPS allows for clear and uncluttered containment of services. Additionally, ledges and steps are minimised with one continuous service zone. Services can be swapped in and out if necessary without the need to revise and alter the service strategy within each room. Bedhead services should be reviewed on a project specific basis to ensure they support the specific local and clinical needs.

The type of laminate utilised within the IPS panelling can also promote a varying level of environment and interior design within the room.

Location of Wash Hand Basin does not require staff to turn their back on the patient when utilising the basin.

The location of the bed and En-Suite doors immediately opposite provide **good sight lines** from the bedhead to the En-Suite, which is particularly beneficial for people with dementia.

Clear access to the external wall allows for **good daylight with sight lines to the outside environment** from the bedhead. This creates a lighter, brighter, therapeutic environment. Refer to the end of this section for various project specific window options.



Figure 2.7: Nested Single Bedroom Repeatable Room - Internal 3D Visualisation

Project Specific Options

Bedhead IPS

The proposals described above show the bedhead IPS running in a straight line behind the bed. This allows for simple and efficient detailing. Project specific situations may determine that a recess would be beneficial immediately behind the bed.

This will allow the bed to be recessed 100-200mm into the IPS wall, and increase the activity space at the foot of the bed. This will increase the detailing of the Bedhead IPS, and will require a more complex floor covering detail. In addition, there may need to be a consideration for edge protection to the recess.

However, this may be an acceptable project option that boards could consider.

In addition, individual consideration to the bedhead luminaire could be given depending on the experiences of different Boards. Articulated arm or side reading lights could be considered should these be preferred.



Figure 2.8 Nested Single Bedroom Repeatable Room showing Recessed Bedhead IPS Option

Bedroom Door & Vision

There are various options for project specific considerations in relation to the Bedroom entrance door and vision panels.

Door and a Half Leaf with Glazed Side Screen

The standard option as indicated in the plans and images previously is for a door and a half leaf with a separate glazed vision side screen. The screen has been sized and positioned to allow a direct sight line to the bed, whilst not clashing with the wash hand basin. The constraints of the door location and the basin does limit the dimensions of this screen.

Figure 2.9: Right, Bedroom Door with Door and a Half Leaf, and Glazed Side Screen.



Door and a Half Leaf with integrated Vision Panels

A project specific option to remove the glazed side screen could be offered, where the door and an half leaf would be provided with glazed vision panels, for patient monitoring. Panels could be fitted with integral blinds allowing for a degree of privacy. This option would remove possible clashes between the glazed side panel and the wash hand basin.

Figure 2.10: Right, Bedroom Door with Door and a Half Leaf, with integrated Vision Panels.



Door with Glazed Half Leaf

A further option would remove the glazed side screen, instead installing a glazed half leaf within the doorset. This would allow increased vision and monitoring without the requirement, and expense, of a separate screen.

Figure 2.11: Right, Bedroom Door with Door and a Half Leaf - Half Leaf fully glazed.



Note: Alternative options on door widths could also be proposed but should be considered in relation to HBN 00-04, and the correlation between door clear width and corridor width for bed tracking. All options within this document show a doorset with a 1700mm structural opening, providing an effective clear width of minimum 1500mm between open leaves. This is compliant with an adjacent corridor width of between 2150mm and 2400mm. If the adjacent corridor width is narrower, designers should carry out bed tracking to ensure the arrangement chosen is functional.

Bedroom Window and Glazing

There are various options for project specific considerations in relation to the bedroom windows, glazing and seating.

Fully Glazed Window Option

The standard option as indicated in the plans and images previously show a fully glazed window option. The size, shape, depth, openable panels, height above floor level and head height can be amended to suit the individual building and elevation arrangements of each specific project.

Figure 2.12: Right, Bedroom Window - Fully Glazed Panel.



Glazed with Openable Panel behind Fixed Louvre System

A project specific option could be to install a fixed louvre panel externally, with a full height, glazed openable vent behind. This allows for the vent panel to be opened fully on the longer, hinged side, enabling the room to benefit from high and low level ventilation, promoting increased air flow and natural ventilation to the room. The fixed louvre panel will act as a protective barrier in this arrangement.

The size, shape, depth, size of the openable louvre panels, heights above floor level and head height can be amended to suit the individual building and elevation arrangements of each specific project.

Figure 2.13: Right, Bedroom Window - Fixed Glazed panel, with openable Louvre Side Panel.



Window with Built-in Bench Seating

A further option would be to utilise the window as a location to install a new built-in bench seating arrangement. This could reduce the requirement for the loose chairs currently proposed within the room or overall within a department. This will be dependent on the width of the window as well as the depth available for the location of the window within the overall wall thickness.

Bench seating is to comply with Infection Control guidelines.

Figure 2.14: Right, Bedroom Window - Fully Glazed Panel with Built-in Bench Seating.



Alternative FF&E

Additional items, such as those suggested on the Room Data Sheets within Appendix A could be included on a project-specific basis. Additional space, power points, supplies etc should be considered and allowed for with any project specific options.

En-Suite, nested back-to-back

Sitting alongside the Adult Single Bedroom noted above, the nested En-Suite arrangement provides back-to-back En-Suites located between two Single Bedrooms.

Within this Repeatable Room, there are 2 variations:

En-Suite nested, for right-hand unassisted En-Suite WC transfer.

En-Suite nested, for left-hand unassisted En-Suite WC transfer.

As with the Single Bedrooms, these En-Suites should be accommodated within a 4-bed cluster in order to provide a 50/50 split of left and right-handed unassisted WC transfer.

Refer to Figures 2.2, 2.3 and 2.4 within the Adult Single Bedroom section to demonstrate how this split is achieved. This arrangement is critical in providing the variety of rooms required to treat those with varying levels of mobility.



Figure 3.1: Nested En-Suite, back-to-back arrangement - 3D Visualisation

Room Description

The En-Suite has been designed to an area of 5.3m². Rooms will sit back to back within the space between two Single Bedrooms. Each room has been designed in accordance with relevant Health Building Notes (HBN) and with the majority of equipment and components as standard

The nested En-Suites sit within the depth of the adjacent Single Bedrooms. A stepped partition arrangement between each En-Suite allows WCs to sit back-to-back, with concealed cisterns behind the IPS panels within the En-Suite. This arrangement allows for a consolidation of drainage stacks within this zone. In order to maximise the area within each En-Suite, the stacks serving each WC will also provide a drainage point for the WHB from the adjacent nested En-Suite.

As with the adjacent Single Bedroom, the En-Suite has been designed in accordance with standard brick setting-out dimensions, giving a width of 2128mm, meaning the nested Bedroom and En-Suite arrangement can be realised across a number of construction types.

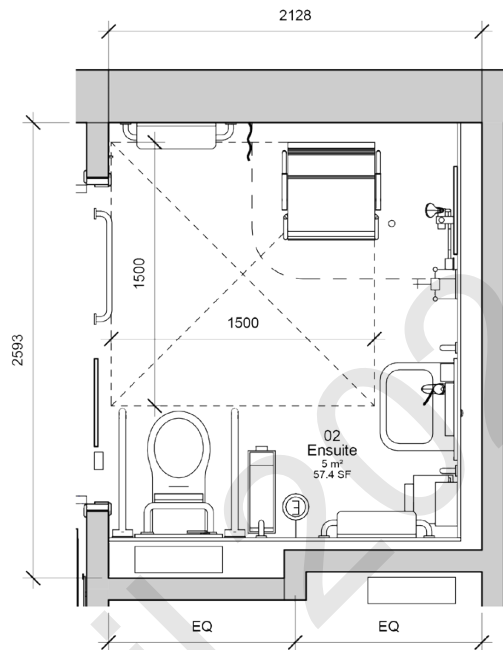


Figure 3.2: Nested En-Suite, Back-to-Back Arrangement (not to scale)

Key Features

- Nested En-Suite allows for an increased overall width and depth of room available within the adjacent Single Bedrooms.
- Wet Room arrangement provides level access to all sanitary facilities including the shower. A mobile shower seat has been specified to allow maximum space for patient assistance within the shower space.
- Clear manoeuvring space of 1500 x 1500mm in line with relevant guidance.
- 1900mm openable space facilitated by double doors to the En-Suite. This allows for dual transfer onto the WC, alongside staff assistance. The left and right-handed options allow for unassisted transfer from both the left hand right of the WC.

Design features may be added to the designs depending on local Board and project specific decisions. These include, but are not limited to:

- Portable shower screens in place of ceiling-mounted shower tracks and curtains, to allow an option for assisted showering.
- Variable height toilet seating for areas such as Orthopaedic departments.
- Alternatively, the mobile shower seat could double as a commode - either free-standing with mounted disposable bedpans, or to be positioned over the toilet.
- Ceiling-mounted overhead hoists from the adjacent Single Bedrooms.
- Loose Furniture Options.
- Reversible mirror with graphic on reverse, for Dementia patients.

Clinical Benefits

Good visibility is maintained from the bed with a degree of privacy from Corridor when viewing through the glazed screen / door vision panel.

Outward opening double doors, can open further than 90°, providing both staff assisted and unassisted patient transfer.

Mobile shower seat allows for both assisted and non-assisted showering.

Various **wall-mounted shelves** allow for storage of both staff and patient consumables.

Consultation / Examination Room

The Consultation / Examination Room has been developed in one considered arrangement – with the couch located close to the door.

Currently, there is only one variation proposed for the Consultation / Examination Room in this arrangement – that with **double-sided access** to the couch.

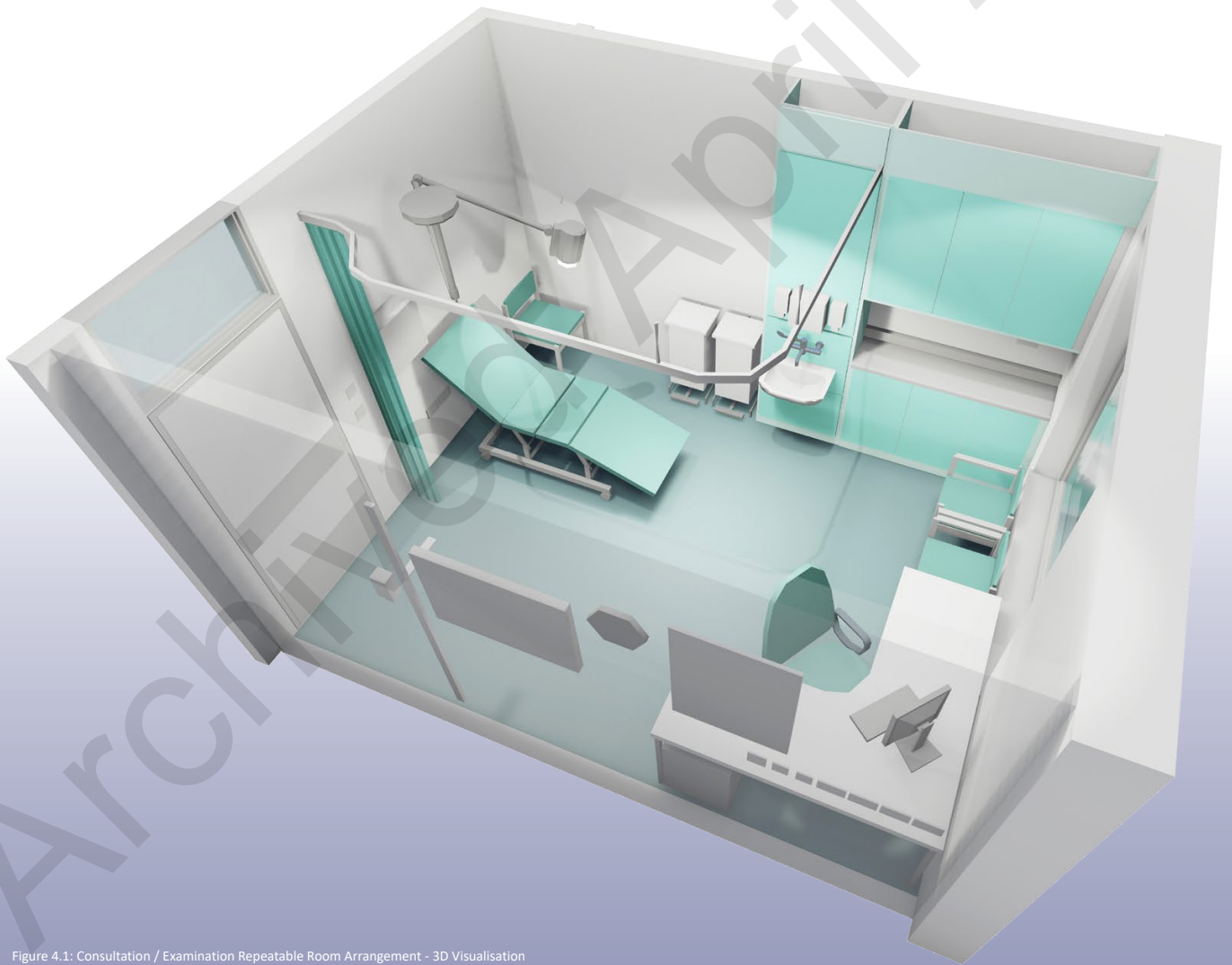


Figure 4.1: Consultation / Examination Repeatabe Room Arrangement - 3D Visualisation

Room Description

The Consultation / Examination Room has been designed to an area of 15m². Each room has been designed with the majority of equipment and components being as standard. Spaces and equipment are also all in accordance with relevant Health Building Notes (HBN).

With this arrangement, a consultation focus has been provided with a priority on sight lines upon entry into the room. It should be noted that this arrangement could result in the patient being located between the clinical staff member and the door, depending on where the loose chairs are positioned. This may require a risk assessment to be considered by various Boards locally.

The Consultation / Examination Room has been designed in accordance with standard brick setting-out dimensions, with a room width of 3475mm. This allows the room to be repeated across a variety of construction types.

A wash hand basin is positioned centrally within the room, mounted upon an IPS system. This IPS aligns and runs into a storage and worktop area adjacent providing set down space and storage for consumables within the room. Running the depth of the IPS in line with the storage cupboards and worktops allows for a simpler floor detail, with limited steps and projections, which simplifies maintenance and cleaning.

An L-shaped corner desk is positioned in the opposite corner of the room, and accommodates the IT workstation within the room. A combination of straight desks and various desk pedestals could also be accommodated on a project-specific basis.

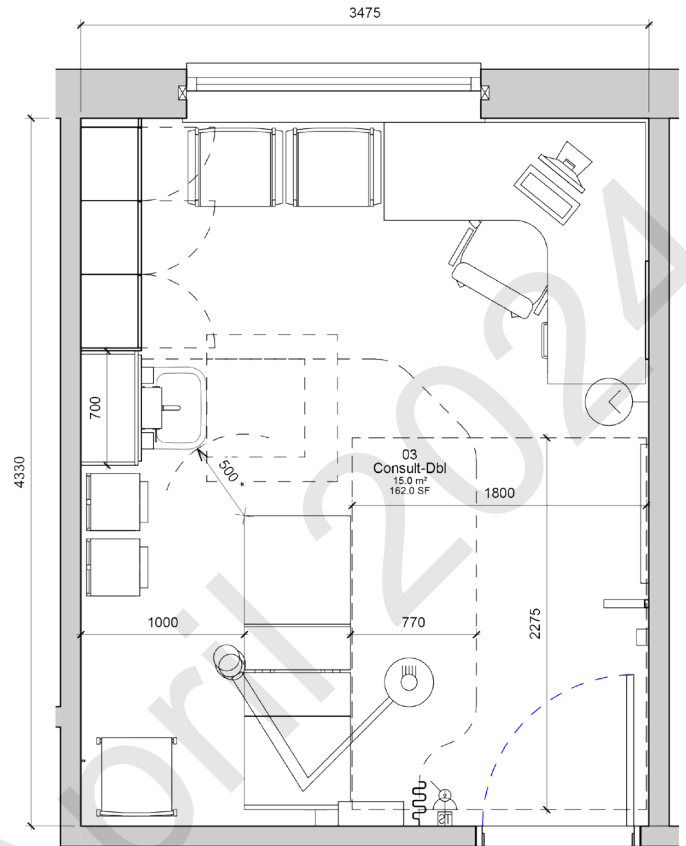


Figure 4.2: Consultation / Examination Room Repeatable Room Arrangement (not to scale)

Key Features

- A focus on consultation with excellent sight lines upon entering the room.
- Seating for 1no clinical staff member and 2no others (patient, family etc) within the room.
- An ability to share the screen at the corner workstation.
- Double-sided couch access with space for assistance.
- Curved, extensive curtain for privacy.
- Access to the clinical hand wash basin without having to leave the patient behind the curtain.
- Provision of daylight is maximised with the external window being located opposite the entrance door.
- Locating the Consultant adjacent to the window allows for the opportunity to vary focal distancing.
- An Activity Space of 2275 x 1800mm is provided, which is in excess of the dimensions required for 90% of self-propelled and electric sampled wheelchair users to turn 180°, in accordance with BS8300-2: 2018. For reference, these dimensions are 2275 x 1625mm, as p.198 of BS8300-2: 2018.

Several design features may be added to the designs depending on local Board and project specific decisions. These include, but are not limited to:

- Extent and dimensions of the window zone, including methods for controlling daylight and glare.
- Extent and dimensions of the room entrance door and vision panel, including the finish, ironmongery and any interstitial blinds.
- Type of lock on the entrance door – suited, digilock etc.
- A mobile examination light could be considered in lieu of the fixed, ceiling-mounted model, should the clinical requirements within the specific Board or location dictate.
- Consideration and option for the desk to be a rise-and-fall type.
- Loose Furniture Options.
- Consideration should be given to sourcing a model of bin that avoids opening lids damaging walls – wall protection is not currently proposed due bins being moveable items.

Room, wall, IPS and finishes colours should be considered on a project specific basis, in line with the use of the room. For example, when used correctly, feature walls allow those with dementia to make sense of a space. However, consideration should be given to the extent and colour of any feature walls, as some colours may not be suitable for the patient group or care being provided.



Figure 4.3: Consultation / Examination Repeatable Room - Internal 3D Visualisation

Clinical Benefits

Distinct zones for both consultation and examination are created within the room. The room is designed so that the couch does not dominate the room.

Access is provided to **both sides** of the couch.

Good levels of natural daylight are provided with the window being located at the end of the room, opposite the entrance door. Should privacy be a concern with this window (for example, ground floor consulting rooms), window manifestation or external planting and landscaping could facilitate additional privacy measures.

Different specialities can be accommodated within the space, as the layout can respond to the evolution of outpatient clinics, in terms of patients' expectations of technology and practice.

A **priority on sightlines** upon entry to the room.



Figure 4.4: Consultation / Examination Repeatable Room - Internal 3D Visualisation

Repeatable Room Data Sheets

The room layouts proposed on previous pages of this report have been developed alongside Talon Solutions in order to provide a standard Room Data Sheet, downloadable from the Talon Activity Data Base. These room layouts have been developed to utilise standard components from the Activity Data Base where possible. Examples of these full Room Data Sheets can be found within **Appendix A** of this document

Where components differ from the ADB standard, or are necessary to be specified as a certain product type, the proposed equipment performance specification, including any changes in specification have been included within the relevant notes of the Room Data Sheet. An example of this would be the bed proposed for the Single Bedroom. Here, a larger bed has been proposed, in line with specific items available on the market. This has been done to ensure a larger component can fit within the space available within the repeatable room. There is an understanding that the actual specification of loose components may change on a project specific basis.

Where suitable components are deemed to be not currently available as a standard product, a performance specification has been included within the relevant notes of the Room Data Sheet. An example of this would be the examination light within the Consultation and Examination Room. Specific requirements are necessary for this fitting in order to accommodate a variety of different ceiling heights, couch heights and the range of movement required to function effectively under these varying conditions.

Product and Material Specifications

As with the P22 Repeatable Room catalogue for England, standard specifications and materials have been developed and agreed between the Department of Health and various suppliers and companies.

It is intended that the Repeatable Rooms within this document will follow and utilise similar specifications where material quality, characteristics and costs are broadly known. However, it is again noted that many of these could be chosen on a project specific basis. As such, refer to **Appendix B** of this document where a list of suggested performance specifications for various products, materials and finishes are noted.

Appendix A

Repeatable Room Data Sheets

B0305-HFS1 Single Bedroom Outboard Configuration, Option 1

B0305-HFS2 Single Bedroom Outboard Configuration, Option 2

B0305-HFS3 Single Bedroom Inboard Configuration, Option 1

B0305-HFS4 Single Bedroom Inboard Configuration, Option 2

V1643-HFS1 Shower Room En-Suite Outboard Configuration, Option 1

V1643-HFS2 Shower Room En-Suite Outboard Configuration, Option 2

V1643-HFS1 Shower Room En-Suite Inboard Configuration, Option 1

V1643-HFS1 Shower Room En-Suite Inboard Configuration, Option 2

C0237-HFS Consultation / Examination Room, Double Sided Couch Access

ADB	Room Data Sheet	B0305-HFS1
------------	------------------------	-------------------

Project:	2532-RR	HFS Repeatable Rooms, ADB
Department:	EXEM	Exemplar Repeatable Rooms
Room:	B0305-HFS1	Single-bed room, outboard configuration, option 1
Room Number:		Revision Date: 20/03/2020

Activities:	<ol style="list-style-type: none"> 1) User may undress and dress in privacy. 2) Rest and relaxation or sleeping. 3) Patient may take meals or refreshments in bed, by the bed or in the sitting space. 4) Entertainment services system may be used. 5) Patient may receive visitors. 6) Clinical wash-hand basin may be used. 7) Patient records may be reviewed and recorded. 8) Electronic patient records (EPRs) may be accessed and updated. 9) Medicines for use by patients (self-medication) is stored securely in a 'personal' locker. 10) A working supply of linen and amenities is stored. 11) A working supply of consumables may be held/stored. 12) Mobile hoist may be used. 13) Patient will receive therapeutic and clinical attention from healthcare staff. 14) Patient may be ambulant, in a wheelchair or on a trolley or bed 15) Carrying out examinations and assessment of patient. 16) Piped medical gases, vacuum and associated equipment may be used.
--------------------	--

Personnel:	<p>1 x patient. 4 x others (staff and/or visitors).</p>
-------------------	---

Planning Relationships:	En-suite sanitary facilities.
--------------------------------	-------------------------------

Space Data:	Area (m²):	19.00	Height (mm):	2700
--------------------	------------------------------	-------	---------------------	------

Notes:

Design Notes:

- DOOR IRONMONGERY: to be part of Door Schedule.
- DOOR STOPPER: to prevent clash with TV, specification to be confirmed.

HIGHLIGHTED AREAS:

- WINDOW ZONE: Extent / Dimensions to be project specific.
- WARDROBE: Type / Size to be project specific
- GLAZED SCREEN: Extent / Dimensions to be project specific
- DOOR VISION PANEL / VISTAMATIC: Extent / Dimensions to be project specific but dependant on Glazed Screen.

ADB 2017 Room Notes:

This room is based on the use of a trolley with a worktop.

It is assumed that computers will be handheld or brought into the room on a trolley.

The call repeat lamp is situated over the door outside the room.

The following items may be provided:

- a ceiling-mounted hoist;
- a small fridge for patient use;
- a combined wardrobe and bedside locker instead of the separate wardrobe and locker;
- when used for maternity post-natal provision of a cot(s) will be required.

Separate data and voice outlets may be used where structure cabling solutions are not available.

ADB	Room Environmental Data	B0305-HFS1
------------	--------------------------------	-------------------

Project:	2532-RR	HFS Repeatable Rooms, ADB
Department:	EXEM	Exemplar Repeatable Rooms
Room:	B0305-HFS1	Single-bed room, outboard configuration, option 1
Room Number:		Revision Date: 20/03/2020

TEMPERATURE AND VENTILATION	Requirements	Notes
Permissible Space Temperature Range(dry bulb) (degC):	18 - 28	
Heating Design Temperature (dry bulb)(degC):	22	
Minimum Air Changes (AC/hr):	6	
Ventilation Type:	S/E/N	
Pressure Relative to Adjoining Space:	Bal	
Supply Air: Final Filter Class	G4	
Permissible Relative Humidity Range (%):	Uncontrolled	

General Notes:

LIGHTING	Requirements	Notes
Type Of Control:	S/N/EM	
Daytime General Service Illuminance (Lux):	100	
Daytime Specific Service Illuminance (Lux):	300	
Nighttime General Service Illuminance (Lux):	5	
Nighttime Specific Service Illuminance (Lux):	0.5	
Local Task Illuminance (Lux):	300	
Colour Rendering Required:	Y	
Colour Rendering Required Characteristics (Ra):	80	
Unified Glare Rating Limit (UGRL):	19	
Emergency Escape Route Lighting Required:	Y	In accordance with BS 5266 and Health Technical Memorandums
Standby Lighting Grade - General Lighting:	A	
Standby Lighting Grade - Local Lighting:	A	

General Notes: Refer to SLL Lighting Guide 2 for more detailed guidance

RISK	Requirements	Notes
Clinical Risk Category:		
Non-clinical Business Continuity Risk Category:		

General Notes:

NOISE	Requirements	Notes
Noise Intrusion (dB) 1hr day:	40	The LAmax,f dB noise limit applies only at night 23:00 to 07:00 hours.
Noise Intrusion (dB) 1hr night:	35	
Noise Intrusion (dB) f night:	45	
Maximum Internal Noise from M&E Services (NR):	30	Total noise of MEP services under normal operation across the range 63Hz to 4kHz inclusive.
Room Sound-insulation Parameters - Privacy:	Confidential	Reference to Table 3 of the Department of Health 'Acoustics: Technical design manual 4032:0.6:England'.
Room Sound-insulation Parameters - Noise Generation:	Typical	
Noise Sensitivity:	Medium	
Sound-insulation Rating (dB D nT,w):		

General Notes:

SAFETY/FIRE	Requirements	Notes
Maximum Surface Temperature (DegC):	43	
Domestic Hot Water Discharge Temperature (DegC):	41	
Maximum Cold Water Discharge Temperature (DegC):	<20	

General Notes:

Type of Automatic Fire Detection:	Smoke	
-----------------------------------	-------	--

General Notes:

	Activity DataBase	09/07/2020
---	--------------------------	-------------------

ADB	Room Design Character	B0305-HFS1
Project:	2532-RR	HFS Repeatable Rooms, ADB
Department:	EXEM	Exemplar Repeatable Rooms
Room:	B0305-HFS1	Single-bed room, outboard configuration, option 1
Room Number:		Revision Date: 20/03/2020
Walls:	<p>Wall finishes to comply with Performance Requirements in HBN 00-10 Part B:Walls and Ceilings (2013)</p> <p>Wall finishes to be selected using the "Selection process for finishes" and "Types of finish by room space" included in HBN 00-10 Part B:Walls and Ceilings.</p>	
Floor:	<p>Floor finishes to comply with Performance Requirements in HBN 00-10 Part A:Flooring (2013)</p> <p>Floor finishes to be selected using the "Selection process for finishes" and "Types of finish by room space" included in HBN 00-10 Part A:Flooring.</p>	
Ceiling:	<p>Ceiling finishes to comply with Performance Requirements in HBN 00-10 Part B:Walls and Ceilings (2013)</p> <p>Ceiling finishes to be selected using the "Selection process for finishes" and "Types of finish by room space" included in HBN 00-10 Part B:Walls and Ceilings.</p>	
Doorsets:	<p>Configuration, glazing, fire rating, security, etc. to be determined by Project Team.</p> <p>HTM 58 (Mar-2005)</p> <p>Refer to HBN 00-04 (May-2007) for effective clear door widths.</p> <p>2 sets of doors: 1 x personnel, bed, trolley, wheelchair & equipment access (1500mm); 1 x approx 2200 mm - see HBN 00-02</p> <p>Requirement for hinge protection when areas used by children</p>	
Windows:	<p>Essential</p> <p>Clear glass with solar and privacy control</p> <p>Designation to be validated against current documentation (HTM 55 archived).</p>	
Internal Glazing:	<p>Non-essential - Project Option</p> <p>Clear with privacy control</p> <p>Designation to be validated against current documentation. HTM 57 (Mar-2005)</p>	
Hatch:	<p>Not required</p>	
Notes:	<p>All finishes to be selected using the "Selection Procedure for Finishes" included in 8941:06: England.</p> <p>All finishes selected must have an appropriate risk assessment to accompany the design decision.</p> <p>Infection Control must be consulted as described in Performance Requirements for Building Elements Used in Healthcare Facilities 8941:0.6 England.</p>	

ADB	Schedule of Components by Room	B0305-HFS1
------------	---------------------------------------	-------------------

Project:	2532-RR	HFS Repeatable Rooms, ADB
Department:	EXEM	Exemplar Repeatable Rooms
Room:	B0305-HFS1	Single-bed room, outboard configuration, option 1
Room Number:		Revision Date: 20/03/2020

Quantity			Code	Description	Alt. Code	Grp
New	Trans	Total				
1		1	BAS1113	BASIN, Contour 21 back outlet washbasin, 50cm, no tapholes, no overflow, no chainstay hole		1
1		1	BED1040	WALL PROTECTION, Bed Head Buffer, Vertical		1
1		1	CAL007	PULL/PUSH BUTTON, staff emergency call, reset and integral/adjacent indicator lamp		1
1		1	CAN1012	CANOPY, size to suit unit below		1
2		2	HOO019	HOOK, single, small, wall mounted		1
1		1	LIG1005	LIGHT, bed head, dimmable, wall mounted		1
1		1	OUT006	SOCKET outlet unswitched 13amp single.		1
7		7	OUT010	SOCKET outlet, switched, 13 amp, twin		1
3		3	OUT131	SOCKET outlet data/voice, double.		1
1		1	OUT206	SOCKET outlet television aerial, single.		1
1		1	OUT471	OUTLET oxygen medical, trunking mounted		1
1		1	OUT476	OUTLET vacuum medical, trunking mounted		1
1		1	RAI1302	RAIL, clinical equipment, wall mounted, max width available		1
1		1	RAI1305	RAIL, Railing (To Suit Length, door)		1
1		1	RAI1306	RAIL, Railing (To Suit Length)		1
2		2	SWC025	SWITCH, light		1
1		1	SWC1090	SWITCH; light, 3 gang		1
1		1	TAP1500	TAP, Markwik 21 Demountable Panel Mixer, Lever Handle, Detachable Spout		1
1		1	THE005	THERMOSTAT		1
1		1	WAR1062	WARDROBE, built in wardrobe, with shelf and 4 no. coat hooks within wardrobe, 600W 400D 1810H		1
1		1	BRA015	BRACKET, flat panel monitor, height adjustable, wall mounted		2
1		1	CLO001	CLOCK battery, wall mounted		2
1		1	DIS011	DISPENSER, barrier cream, disposable single cartridge, wall mounted		2
1		1	DIS013	DISPENSER, paper towel, wall mounted		2
1		1	DIS026	DISPENSER, Medical hand sanitizer, lever action, wall mounted		2
1		1	DIS030	DISPENSER, soap, disposable single cartridge, lever action, wall mounted		2
1		1	DIS438	DISPENSER, disposable gloves set of 3 and disposable apron, wall mounted		2
1		1	TVM1010	TELEVISION monitor, colour, flat panel, 32", wall mounted		2
1		1	BED015	BED variable height, two-way tilt, adjustable backrest and knee-break, built-in bed extension with mattress retainer, electrically operated, on castors, 380-780H 2260/2430L 1010W		3
1		1	CHA307	CHAIR, easy, high back, with open arms, upholstered, wipeable		3
2		2	CHA317	CHAIR, upright, upholstered, stacking, wipeable		3
2		2	HOL004	HOLDER, sack, with lid foot operated, small, freestanding		3

ADB	Schedule of Components by Room	B0305-HFS1
------------	---------------------------------------	-------------------

Project:	2532-RR	HFS Repeatable Rooms, ADB
Department:	EXEM	Exemplar Repeatable Rooms
Room:	B0305-HFS1	Single-bed room, outboard configuration, option 1
Room Number:		Revision Date: 20/03/2020

Quantity			Code	Description	Alt. Code	Grp
New	Trans	Total				
1		1	LOC004	LOCKER, bedside, 4 compartment with lockable section /drawer, towel rail at rear, on castors, 902H 485W 485D		3
1		1	MAT008	MATTRESS, suitable for BED015		3
1		1	TAB073	TABLE, overbed, cantilevered		3

	Activity DataBase	09/07/2020
---	--------------------------	------------

ADB	Room Data Sheet	B0305-HFS2
------------	------------------------	-------------------

Project:	2532-RR	HFS Repeatable Rooms, ADB
Department:	EXEM	Exemplar Repeatable Rooms
Room:	B0305-HFS2	Single-bed room, outboard configuration, option 2
Room Number:		Revision Date: 20/03/2020

Activities:	<ol style="list-style-type: none"> 1) User may undress and dress in privacy. 2) Rest and relaxation or sleeping. 3) Patient may take meals or refreshments in bed, by the bed or in the sitting space. 4) Entertainment services system may be used. 5) Patient may receive visitors. 6) Clinical wash-hand basin may be used. 7) Patient records may be reviewed and recorded. 8) Electronic patient records (EPRs) may be accessed and updated. 9) Medicines for use by patients (self-medication) is stored securely in a 'personal' locker. 10) A working supply of linen and amenities is stored. 11) A working supply of consumables may be held/stored. 12) Mobile hoist may be used. 13) Patient will receive therapeutic and clinical attention from healthcare staff. 14) Patient may be ambulant, in a wheelchair or on a trolley or bed 15) Carrying out examinations and assessment of patient. 16) Piped medical gases, vacuum and associated equipment may be used.
--------------------	--

Personnel:	<p>1 x patient. 4 x others (staff and/or visitors).</p>
-------------------	---

Planning Relationships:	En-suite sanitary facilities.
--------------------------------	-------------------------------

Space Data:	Area (m²):	19.00	Height (mm):	2700
--------------------	------------------------------	-------	---------------------	------

Notes:

Design Notes:

- DOOR IRONMONGERY: to be part of Door Schedule.
- DOOR STOPPER: to prevent clash with TV, specification to be confirmed.

HIGHLIGHTED AREAS:

- WINDOW ZONE: Extent / Dimensions to be project specific.
- WARDROBE: Type / Size to be project specific
- GLAZED SCREEN: Extent / Dimensions to be project specific
- DOOR VISION PANEL / VISTAMATIC: Extent / Dimensions to be project specific but dependant on Glazed Screen.

ADB 2017 Room Notes:

This room is based on the use of a trolley with a worktop.

It is assumed that computers will be handheld or brought into the room on a trolley.

The call repeat lamp is situated over the door outside the room.

The following items may be provided:

- a ceiling-mounted hoist;
- a small fridge for patient use;
- a combined wardrobe and bedside locker instead of the separate wardrobe and locker;
- when used for maternity post-natal provision of a cot(s) will be required.

Separate data and voice outlets may be used where structure cabling solutions are not available.

ADB	Room Environmental Data	B0305-HFS2
------------	--------------------------------	-------------------

Project:	2532-RR	HFS Repeatable Rooms, ADB
Department:	EXEM	Exemplar Repeatable Rooms
Room:	B0305-HFS2	Single-bed room, outboard configuration, option 2
Room Number:		Revision Date: 20/03/2020

TEMPERATURE AND VENTILATION	Requirements	Notes
Permissible Space Temperature Range(dry bulb) (degC):	18 - 28	
Heating Design Temperature (dry bulb)(degC):	22	
Minimum Air Changes (AC/hr):	6	
Ventilation Type:	S/E/N	
Pressure Relative to Adjoining Space:	Bal	
Supply Air: Final Filter Class	G4	
Permissible Relative Humidity Range (%):	Uncontrolled	

General Notes:

LIGHTING	Requirements	Notes
Type Of Control:	S/N/EM	
Daytime General Service Illuminance (Lux):	100	
Daytime Specific Service Illuminance (Lux):	300	
Nighttime General Service Illuminance (Lux):	5	
Nighttime Specific Service Illuminance (Lux):	0.5	
Local Task Illuminance (Lux):	300	
Colour Rendering Required:	Y	
Colour Rendering Required Characteristics (Ra):	80	
Unified Glare Rating Limit (UGRL):	19	
Emergency Escape Route Lighting Required:	Y	In accordance with BS 5266 and Health Technical Memorandums
Standby Lighting Grade - General Lighting:	A	
Standby Lighting Grade - Local Lighting:	A	

General Notes: Refer to SLL Lighting Guide 2 for more detailed guidance

RISK	Requirements	Notes
Clinical Risk Category:		
Non-clinical Business Continuity Risk Category:		

General Notes:

NOISE	Requirements	Notes
Noise Intrusion (dB) 1hr day:	40	The LAmax,f dB noise limit applies only at night 23:00 to 07:00 hours.
Noise Intrusion (dB) 1hr night:	35	
Noise Intrusion (dB) f night:	45	
Maximum Internal Noise from M&E Services (NR):	30	Total noise of MEP services under normal operation across the range 63Hz to 4kHz inclusive.
Room Sound-insulation Parameters - Privacy:	Confidential	Reference to Table 3 of the Department of Health 'Acoustics: Technical design manual 4032:0.6:England'.
Room Sound-insulation Parameters - Noise Generation:	Typical	
Noise Sensitivity:	Medium	
Sound-insulation Rating (dB D nT,w):		

General Notes:

SAFETY/FIRE	Requirements	Notes
Maximum Surface Temperature (DegC):	43	
Domestic Hot Water Discharge Temperature (DegC):	41	
Maximum Cold Water Discharge Temperature (DegC):	<20	

General Notes:

Type of Automatic Fire Detection:	Smoke	
-----------------------------------	-------	--

General Notes:

ADB	Room Design Character		B0305-HFS2
Project:	2532-RR	HFS Repeatable Rooms, ADB	
Department:	EXEM	Exemplar Repeatable Rooms	
Room:	B0305-HFS2	Single-bed room, outboard configuration, option 2	
Room Number:		Revision Date:	20/03/2020
Walls:	<p>Wall finishes to comply with Performance Requirements in HBN 00-10 Part B:Walls and Ceilings (2013)</p> <p>Wall finishes to be selected using the "Selection process for finishes" and "Types of finish by room space" included in HBN 00-10 Part B:Walls and Ceilings.</p>		
Floor:	<p>Floor finishes to comply with Performance Requirements in HBN 00-10 Part A:Flooring (2013)</p> <p>Floor finishes to be selected using the "Selection process for finishes" and "Types of finish by room space" included in HBN 00-10 Part A:Flooring.</p>		
Ceiling:	<p>Ceiling finishes to comply with Performance Requirements in HBN 00-10 Part B:Walls and Ceilings (2013)</p> <p>Ceiling finishes to be selected using the "Selection process for finishes" and "Types of finish by room space" included in HBN 00-10 Part B:Walls and Ceilings.</p>		
Doorsets:	<p>Configuration, glazing, fire rating, security, etc. to be determined by Project Team.</p> <p>HTM 58 (Mar-2005)</p> <p>Refer to HBN 00-04 (May-2007) for effective clear door widths.</p> <p>2 sets of doors: 1 x personnel, bed, trolley, wheelchair & equipment access (1500mm); 1 x approx 2200 mm - see HBN 00-02</p> <p>Requirement for hinge protection when areas used by children</p>		
Windows:	<p>Essential</p> <p>Clear glass with solar and privacy control</p> <p>Designation to be validated against current documentation (HTM 55 archived).</p>		
Internal Glazing:	<p>Non-essential - Project Option</p> <p>Clear with privacy control</p> <p>Designation to be validated against current documentation. HTM 57 (Mar-2005)</p>		
Hatch:	Not required		
Notes:	<p>All finishes to be selected using the "Selection Procedure for Finishes" included in 8941:06: England.</p> <p>All finishes selected must have an appropriate risk assessment to accompany the design decision.</p> <p>Infection Control must be consulted as described in Performance Requirements for Building Elements Used in Healthcare Facilities 8941:0.6 England.</p>		

ADB	Schedule of Components by Room	B0305-HFS2
------------	---------------------------------------	-------------------

Project:	2532-RR	HFS Repeatable Rooms, ADB
Department:	EXEM	Exemplar Repeatable Rooms
Room:	B0305-HFS2	Single-bed room, outboard configuration, option 2
Room Number:		Revision Date: 20/03/2020

Quantity			Code	Description	Alt. Code	Grp
New	Trans	Total				
1		1	BAS1113	BASIN, Contour 21 back outlet washbasin, 50cm, no tapholes, no overflow, no chainstay hole		1
1		1	BED1040	WALL PROTECTION, Bed Head Buffer, Vertical		1
1		1	CAL007	PULL/PUSH BUTTON, staff emergency call, reset and integral/adjacent indicator lamp		1
1		1	CAN1012	CANOPY, size to suit unit below		1
2		2	HOO019	HOOK, single, small, wall mounted		1
1		1	LIG1005	LIGHT, bed head, dimmable, wall mounted		1
1		1	OUT006	SOCKET outlet unswitched 13amp single.		1
7		7	OUT010	SOCKET outlet, switched, 13 amp, twin		1
3		3	OUT131	SOCKET outlet data/voice, double.		1
1		1	OUT206	SOCKET outlet television aerial, single.		1
1		1	OUT471	OUTLET oxygen medical, trunking mounted		1
1		1	OUT476	OUTLET vacuum medical, trunking mounted		1
1		1	RAI1302	RAIL, clinical equipment, wall mounted, max width available		1
1		1	RAI1305H	RAIL, Railing (To Suit Length, door), handed		1
1		1	RAI1306	RAIL, Railing (To Suit Length)		1
2		2	SWC025	SWITCH, light		1
1		1	SWC1090	SWITCH; light, 3 gang		1
1		1	TAP1500	TAP, Markwik 21 Demountable Panel Mixer, Lever Handle, Detachable Spout		1
1		1	THE005	THERMOSTAT		1
1		1	WAR1062	WARDROBE, built in wardrobe, with shelf and 4 no. coat hooks within wardrobe, 600W 400D 1810H		1
1		1	BRA015	BRACKET, flat panel monitor, height adjustable, wall mounted		2
1		1	CLO001	CLOCK battery, wall mounted		2
1		1	DIS011	DISPENSER, barrier cream, disposable single cartridge, wall mounted		2
1		1	DIS013	DISPENSER, paper towel, wall mounted		2
1		1	DIS026	DISPENSER, Medical hand sanitizer, lever action, wall mounted		2
1		1	DIS030	DISPENSER, soap, disposable single cartridge, lever action, wall mounted		2
1		1	DIS438	DISPENSER, disposable gloves set of 3 and disposable apron, wall mounted		2
1		1	TVM1010	TELEVISION monitor, colour, flat panel, 32", wall mounted		2
1		1	BED015	BED variable height, two-way tilt, adjustable backrest and knee-break, built-in bed extension with mattress retainer, electrically operated, on castors, 380-780H 2260/2430L 1010W		3
1		1	CHA307	CHAIR, easy, high back, with open arms, upholstered, wipeable		3
2		2	CHA317	CHAIR, upright, upholstered, stacking, wipeable		3
2		2	HOL004	HOLDER, sack, with lid foot operated, small, freestanding		3

ADB	Schedule of Components by Room	B0305-HFS2
------------	---------------------------------------	-------------------

Project:	2532-RR	HFS Repeatable Rooms, ADB
Department:	EXEM	Exemplar Repeatable Rooms
Room:	B0305-HFS2	Single-bed room, outboard configuration, option 2
Room Number:		Revision Date: 20/03/2020

Quantity			Code	Description	Alt. Code	Grp
New	Trans	Total				
1		1	LOC004	LOCKER, bedside, 4 compartment with lockable section /drawer, towel rail at rear, on castors, 902H 485W 485D		3
1		1	MAT008	MATTRESS, suitable for BED015		3
1		1	TAB073	TABLE, overbed, cantilevered		3

	Activity DataBase	09/07/2020
---	--------------------------	------------

ADB	Room Data Sheet	B0305-HFS3
------------	------------------------	-------------------

Project:	2532-RR	HFS Repeatable Rooms, ADB
Department:	EXEM	Exemplar Repeatable Rooms
Room:	B0305-HFS3	Single-bed room, inboard configuration, option 1
Room Number:		Revision Date: 20/03/2020

Activities:	<ol style="list-style-type: none"> 1) User may undress and dress in privacy. 2) Rest and relaxation or sleeping. 3) Patient may take meals or refreshments in bed, by the bed or in the sitting space. 4) Entertainment services system may be used. 5) Patient may receive visitors. 6) Clinical wash-hand basin may be used. 7) Patient records may be reviewed and recorded. 8) Electronic patient records (EPRs) may be accessed and updated. 9) Medicines for use by patients (self-medication) is stored securely in a 'personal' locker. 10) A working supply of linen and amenities is stored. 11) A working supply of consumables may be held/stored. 12) Mobile hoist may be used. 13) Patient will receive therapeutic and clinical attention from healthcare staff. 14) Patient may be ambulant, in a wheelchair or on a trolley or bed 15) Carrying out examinations and assessment of patient. 16) Piped medical gases, vacuum and associated equipment may be used.
--------------------	--

Personnel:	<p>1 x patient.</p> <p>4 x others (staff and/or visitors).</p>
-------------------	--

Planning Relationships:	En-suite sanitary facilities.
--------------------------------	-------------------------------

Space Data:	Area (m²):	19.00	Height (mm):	2700
--------------------	------------------------------	-------	---------------------	------

Notes:

Design Notes:

- DOOR IRONMONGERY: to be part of Door Schedule.
- DOOR STOPPER: to prevent clash with TV, specification to be confirmed.

HIGHLIGHTED AREAS:

- WINDOW ZONE: Extent / Dimensions to be project specific.
- WARDROBE: Type / Size to be project specific
- GLAZED SCREEN: Extent / Dimensions to be project specific
- DOOR VISION PANEL / VISTAMATIC: Extent / Dimensions to be project specific but dependant on Glazed Screen.

ADB 2017 Room Notes:

This room is based on the use of a trolley with a worktop.

It is assumed that computers will be handheld or brought into the room on a trolley.

The call repeat lamp is situated over the door outside the room.

The following items may be provided:

- a ceiling-mounted hoist;
- a small fridge for patient use;
- a combined wardrobe and bedside locker instead of the separate wardrobe and locker;
- when used for maternity post-natal provision of a cot(s) will be required.

Separate data and voice outlets may be used where structure cabling solutions are not available.

ADB	Room Environmental Data	B0305-HFS3
------------	--------------------------------	-------------------

Project:	2532-RR	HFS Repeatable Rooms, ADB
Department:	EXEM	Exemplar Repeatable Rooms
Room:	B0305-HFS3	Single-bed room, inboard configuration, option 1
Room Number:		Revision Date: 20/03/2020

TEMPERATURE AND VENTILATION	Requirements	Notes
Permissible Space Temperature Range(dry bulb) (degC):	18 - 28	
Heating Design Temperature (dry bulb)(degC):	22	
Minimum Air Changes (AC/hr):	6	
Ventilation Type:	S/E/N	
Pressure Relative to Adjoining Space:	Bal	
Supply Air: Final Filter Class	G4	
Permissible Relative Humidity Range (%):	Uncontrolled	

General Notes:

LIGHTING	Requirements	Notes
Type Of Control:	S/N/EM	
Daytime General Service Illuminance (Lux):	100	
Daytime Specific Service Illuminance (Lux):	300	
Nighttime General Service Illuminance (Lux):	5	
Nighttime Specific Service Illuminance (Lux):	0.5	
Local Task Illuminance (Lux):	300	
Colour Rendering Required:	Y	
Colour Rendering Required Characteristics (Ra):	80	
Unified Glare Rating Limit (UGRL):	19	
Emergency Escape Route Lighting Required:	Y	In accordance with BS 5266 and Health Technical Memorandums
Standby Lighting Grade - General Lighting:	A	
Standby Lighting Grade - Local Lighting:	A	

General Notes: Refer to SLL Lighting Guide 2 for more detailed guidance

RISK	Requirements	Notes
Clinical Risk Category:		
Non-clinical Business Continuity Risk Category:		

General Notes:

NOISE	Requirements	Notes
Noise Intrusion (dB) 1hr day:	40	The LAmax,f dB noise limit applies only at night 23:00 to 07:00 hours.
Noise Intrusion (dB) 1hr night:	35	
Noise Intrusion (dB) f night:	45	
Maximum Internal Noise from M&E Services (NR):	30	Total noise of MEP services under normal operation across the range 63Hz to 4kHz inclusive.
Room Sound-insulation Parameters - Privacy:	Confidential	Reference to Table 3 of the Department of Health 'Acoustics: Technical design manual 4032:0.6:England'.
Room Sound-insulation Parameters - Noise Generation:	Typical	
Noise Sensitivity:	Medium	
Sound-insulation Rating (dB D nT,w):		

General Notes:

SAFETY/FIRE	Requirements	Notes
Maximum Surface Temperature (DegC):	43	
Domestic Hot Water Discharge Temperature (DegC):	41	
Maximum Cold Water Discharge Temperature (DegC):	<20	

General Notes:

Type of Automatic Fire Detection:	Smoke	
-----------------------------------	-------	--

General Notes:

ADB	Room Design Character	B0305-HFS3
Project:	2532-RR	HFS Repeatable Rooms, ADB
Department:	EXEM	Exemplar Repeatable Rooms
Room:	B0305-HFS3	Single-bed room, inboard configuration, option 1
Room Number:		Revision Date: 20/03/2020
Walls:	<p>Wall finishes to comply with Performance Requirements in HBN 00-10 Part B:Walls and Ceilings (2013)</p> <p>Wall finishes to be selected using the "Selection process for finishes" and "Types of finish by room space" included in HBN 00-10 Part B:Walls and Ceilings.</p>	
Floor:	<p>Floor finishes to comply with Performance Requirements in HBN 00-10 Part A:Flooring (2013)</p> <p>Floor finishes to be selected using the "Selection process for finishes" and "Types of finish by room space" included in HBN 00-10 Part A:Flooring.</p>	
Ceiling:	<p>Ceiling finishes to comply with Performance Requirements in HBN 00-10 Part B:Walls and Ceilings (2013)</p> <p>Ceiling finishes to be selected using the "Selection process for finishes" and "Types of finish by room space" included in HBN 00-10 Part B:Walls and Ceilings.</p>	
Doorsets:	<p>Configuration, glazing, fire rating, security, etc. to be determined by Project Team.</p> <p>HTM 58 (Mar-2005)</p> <p>Refer to HBN 00-04 (May-2007) for effective clear door widths.</p> <p>2 sets of doors: 1 x personnel, bed, trolley, wheelchair & equipment access (1500mm); 1 x approx 2200 mm - see HBN 00-02</p> <p>Requirement for hinge protection when areas used by children</p>	
Windows:	<p>Essential</p> <p>Clear glass with solar and privacy control</p> <p>Designation to be validated against current documentation (HTM 55 archived).</p>	
Internal Glazing:	<p>Non-essential - Project Option</p> <p>Clear with privacy control</p> <p>Designation to be validated against current documentation. HTM 57 (Mar-2005)</p>	
Hatch:	<p>Not required</p>	
Notes:	<p>All finishes to be selected using the "Selection Procedure for Finishes" included in 8941:06: England.</p> <p>All finishes selected must have an appropriate risk assessment to accompany the design decision.</p> <p>Infection Control must be consulted as described in Performance Requirements for Building Elements Used in Healthcare Facilities 8941:0.6 England.</p>	

ADB	Schedule of Components by Room	B0305-HFS3
------------	---------------------------------------	-------------------

Project:	2532-RR	HFS Repeatable Rooms, ADB
Department:	EXEM	Exemplar Repeatable Rooms
Room:	B0305-HFS3	Single-bed room, inboard configuration, option 1
Room Number:		Revision Date: 20/03/2020

Quantity			Code	Description	Alt. Code	Grp
New	Trans	Total				
1		1	BAS1113	BASIN, Contour 21 back outlet washbasin, 50cm, no tapholes, no overflow, no chainstay hole		1
1		1	BED1040	WALL PROTECTION, Bed Head Buffer, Vertical		1
1		1	CAL007	PULL/PUSH BUTTON, staff emergency call, reset and integral/adjacent indicator lamp		1
1		1	CAN1012	CANOPY, size to suit unit below		1
2		2	HOO019	HOOK, single, small, wall mounted		1
1		1	LIG1005	LIGHT, bed head, dimmable, wall mounted		1
1		1	OUT006	SOCKET outlet unswitched 13amp single.		1
7		7	OUT010	SOCKET outlet, switched, 13 amp, twin		1
3		3	OUT131	SOCKET outlet data/voice, double.		1
1		1	OUT206	SOCKET outlet television aerial, single.		1
1		1	OUT471	OUTLET oxygen medical, trunking mounted		1
1		1	OUT476	OUTLET vacuum medical, trunking mounted		1
1		1	RAI1302	RAIL, clinical equipment, wall mounted, max width available		1
1		1	RAI1305H	RAIL, Railing (To Suit Length, door), handed		1
1		1	RAI1306	RAIL, Railing (To Suit Length)		1
2		2	SWC025	SWITCH, light		1
1		1	SWC1090	SWITCH; light, 3 gang		1
1		1	TAP1500	TAP, Markwik 21 Demountable Panel Mixer, Lever Handle, Detachable Spout		1
1		1	THE005	THERMOSTAT		1
1		1	WAR1062	WARDROBE, built in wardrobe, with shelf and 4 no. coat hooks within wardrobe, 600W 400D 1810H		1
1		1	BRA015	BRACKET, flat panel monitor, height adjustable, wall mounted		2
1		1	CLO001	CLOCK battery, wall mounted		2
1		1	DIS011	DISPENSER, barrier cream, disposable single cartridge, wall mounted		2
1		1	DIS013	DISPENSER, paper towel, wall mounted		2
1		1	DIS026	DISPENSER, Medical hand sanitizer, lever action, wall mounted		2
1		1	DIS030	DISPENSER, soap, disposable single cartridge, lever action, wall mounted		2
1		1	DIS438	DISPENSER, disposable gloves set of 3 and disposable apron, wall mounted		2
1		1	TVM1010	TELEVISION monitor, colour, flat panel, 32", wall mounted		2
1		1	BED015	BED variable height, two-way tilt, adjustable backrest and knee-break, built-in bed extension with mattress retainer, electrically operated, on castors, 380-780H 2260/2430L 1010W		3
1		1	CHA307	CHAIR, easy, high back, with open arms, upholstered, wipeable		3
2		2	CHA317	CHAIR, upright, upholstered, stacking, wipeable		3
2		2	HOL004	HOLDER, sack, with lid foot operated, small, freestanding		3

	Activity DataBase	09/07/2020
---	--------------------------	-------------------

ADB	Schedule of Components by Room	B0305-HFS3
------------	---------------------------------------	-------------------

Project:	2532-RR	HFS Repeatable Rooms, ADB
Department:	EXEM	Exemplar Repeatable Rooms
Room:	B0305-HFS3	Single-bed room, inboard configuration, option 1
Room Number:		Revision Date: 20/03/2020

Quantity			Code	Description	Alt. Code	Grp
New	Trans	Total				
1		1	LOC004	LOCKER, bedside, 4 compartment with lockable section /drawer, towel rail at rear, on castors, 902H 485W 485D		3
1		1	MAT008	MATTRESS, suitable for BED015		3
1		1	TAB073	TABLE, overbed, cantilevered		3

	Activity DataBase	09/07/2020
---	--------------------------	------------

ADB	Room Data Sheet	B0305-HFS4
------------	------------------------	-------------------

Project:	2532-RR	HFS Repeatable Rooms, ADB
Department:	EXEM	Exemplar Repeatable Rooms
Room:	B0305-HFS4	Single-bed room, inboard configuration, option 2
Room Number:		Revision Date: 20/03/2020

Activities:	<ol style="list-style-type: none"> 1) User may undress and dress in privacy. 2) Rest and relaxation or sleeping. 3) Patient may take meals or refreshments in bed, by the bed or in the sitting space. 4) Entertainment services system may be used. 5) Patient may receive visitors. 6) Clinical wash-hand basin may be used. 7) Patient records may be reviewed and recorded. 8) Electronic patient records (EPRs) may be accessed and updated. 9) Medicines for use by patients (self-medication) is stored securely in a 'personal' locker. 10) A working supply of linen and amenities is stored. 11) A working supply of consumables may be held/stored. 12) Mobile hoist may be used. 13) Patient will receive therapeutic and clinical attention from healthcare staff. 14) Patient may be ambulant, in a wheelchair or on a trolley or bed 15) Carrying out examinations and assessment of patient. 16) Piped medical gases, vacuum and associated equipment may be used.
--------------------	--

Personnel:	<p>1 x patient. 4 x others (staff and/or visitors).</p>
-------------------	---

Planning Relationships:	En-suite sanitary facilities.
--------------------------------	-------------------------------

Space Data:	Area (m²):	19.00	Height (mm):	2700
--------------------	------------------------------	-------	---------------------	------

Notes:

Design Notes:

- DOOR IRONMONGERY: to be part of Door Schedule.
- DOOR STOPPER: to prevent clash with TV, specification to be confirmed.

HIGHLIGHTED AREAS:

- WINDOW ZONE: Extent / Dimensions to be project specific.
- WARDROBE: Type / Size to be project specific
- GLAZED SCREEN: Extent / Dimensions to be project specific
- DOOR VISION PANEL / VISTAMATIC: Extent / Dimensions to be project specific but dependant on Glazed Screen.

ADB 2017 Room Notes:

This room is based on the use of a trolley with a worktop.

It is assumed that computers will be handheld or brought into the room on a trolley.

The call repeat lamp is situated over the door outside the room.

The following items may be provided:

- a ceiling-mounted hoist;
- a small fridge for patient use;
- a combined wardrobe and bedside locker instead of the separate wardrobe and locker;
- when used for maternity post-natal provision of a cot(s) will be required.

Separate data and voice outlets may be used where structure cabling solutions are not available.

ADB	Room Environmental Data	B0305-HFS4
------------	--------------------------------	-------------------

Project:	2532-RR	HFS Repeatable Rooms, ADB
Department:	EXEM	Exemplar Repeatable Rooms
Room:	B0305-HFS4	Single-bed room, inboard configuration, option 2
Room Number:		Revision Date: 20/03/2020

TEMPERATURE AND VENTILATION	Requirements	Notes
Permissible Space Temperature Range(dry bulb) (degC):	18 - 28	
Heating Design Temperature (dry bulb)(degC):	22	
Minimum Air Changes (AC/hr):	6	
Ventilation Type:	S/E/N	
Pressure Relative to Adjoining Space:	Bal	
Supply Air: Final Filter Class	G4	
Permissible Relative Humidity Range (%):	Uncontrolled	

General Notes:

LIGHTING	Requirements	Notes
Type Of Control:	S/N/EM	
Daytime General Service Illuminance (Lux):	100	
Daytime Specific Service Illuminance (Lux):	300	
Nighttime General Service Illuminance (Lux):	5	
Nighttime Specific Service Illuminance (Lux):	0.5	
Local Task Illuminance (Lux):	300	
Colour Rendering Required:	Y	
Colour Rendering Required Characteristics (Ra):	80	
Unified Glare Rating Limit (UGRL):	19	
Emergency Escape Route Lighting Required:	Y	In accordance with BS 5266 and Health Technical Memorandums
Standby Lighting Grade - General Lighting:	A	
Standby Lighting Grade - Local Lighting:	A	

General Notes: Refer to SLL Lighting Guide 2 for more detailed guidance

RISK	Requirements	Notes
Clinical Risk Category:		
Non-clinical Business Continuity Risk Category:		

General Notes:

NOISE	Requirements	Notes
Noise Intrusion (dB) 1hr day:	40	The LAmax,f dB noise limit applies only at night 23:00 to 07:00 hours.
Noise Intrusion (dB) 1hr night:	35	
Noise Intrusion (dB) f night:	45	
Maximum Internal Noise from M&E Services (NR):	30	Total noise of MEP services under normal operation across the range 63Hz to 4kHz inclusive.
Room Sound-insulation Parameters - Privacy:	Confidential	Reference to Table 3 of the Department of Health 'Acoustics: Technical design manual 4032:0.6:England'.
Room Sound-insulation Parameters - Noise Generation:	Typical	
Noise Sensitivity:	Medium	
Sound-insulation Rating (dB D nT,w):		

General Notes:

SAFETY/FIRE	Requirements	Notes
Maximum Surface Temperature (DegC):	43	
Domestic Hot Water Discharge Temperature (DegC):	41	
Maximum Cold Water Discharge Temperature (DegC):	<20	

General Notes:

Type of Automatic Fire Detection:	Smoke	
-----------------------------------	-------	--

General Notes:

	Activity DataBase	09/07/2020
---	--------------------------	-------------------

ADB	Room Design Character		B0305-HFS4
Project:	2532-RR	HFS Repeatable Rooms, ADB	
Department:	EXEM	Exemplar Repeatable Rooms	
Room:	B0305-HFS4	Single-bed room, inboard configuration, option 2	
Room Number:			Revision Date: 20/03/2020
Walls:	<p>Wall finishes to comply with Performance Requirements in HBN 00-10 Part B:Walls and Ceilings (2013)</p> <p>Wall finishes to be selected using the "Selection process for finishes" and "Types of finish by room space" included in HBN 00-10 Part B:Walls and Ceilings.</p>		
Floor:	<p>Floor finishes to comply with Performance Requirements in HBN 00-10 Part A:Flooring (2013)</p> <p>Floor finishes to be selected using the "Selection process for finishes" and "Types of finish by room space" included in HBN 00-10 Part A:Flooring.</p>		
Ceiling:	<p>Ceiling finishes to comply with Performance Requirements in HBN 00-10 Part B:Walls and Ceilings (2013)</p> <p>Ceiling finishes to be selected using the "Selection process for finishes" and "Types of finish by room space" included in HBN 00-10 Part B:Walls and Ceilings.</p>		
Doorsets:	<p>Configuration, glazing, fire rating, security, etc. to be determined by Project Team.</p> <p>HTM 58 (Mar-2005)</p> <p>Refer to HBN 00-04 (May-2007) for effective clear door widths.</p> <p>2 sets of doors: 1 x personnel, bed, trolley, wheelchair & equipment access (1500mm); 1 x approx 2200 mm - see HBN 00-02</p> <p>Requirement for hinge protection when areas used by children</p>		
Windows:	<p>Essential</p> <p>Clear glass with solar and privacy control</p> <p>Designation to be validated against current documentation (HTM 55 archived).</p>		
Internal Glazing:	<p>Non-essential - Project Option</p> <p>Clear with privacy control</p> <p>Designation to be validated against current documentation. HTM 57 (Mar-2005)</p>		
Hatch:	<p>Not required</p>		
Notes:	<p>All finishes to be selected using the "Selection Procedure for Finishes" included in 8941:06: England.</p> <p>All finishes selected must have an appropriate risk assessment to accompany the design decision.</p> <p>Infection Control must be consulted as described in Performance Requirements for Building Elements Used in Healthcare Facilities 8941:0.6 England.</p>		

ADB	Schedule of Components by Room	B0305-HFS4
------------	---------------------------------------	-------------------

Project:	2532-RR	HFS Repeatable Rooms, ADB
Department:	EXEM	Exemplar Repeatable Rooms
Room:	B0305-HFS4	Single-bed room, inboard configuration, option 2
Room Number:		Revision Date: 20/03/2020

Quantity			Code	Description	Alt. Code	Grp
New	Trans	Total				
1		1	BAS1113	BASIN, Contour 21 back outlet washbasin, 50cm, no tapholes, no overflow, no chainstay hole		1
1		1	BED1040	WALL PROTECTION, Bed Head Buffer, Vertical		1
1		1	CAL007	PULL/PUSH BUTTON, staff emergency call, reset and integral/adjacent indicator lamp		1
1		1	CAN1012	CANOPY, size to suit unit below		1
2		2	HOO019	HOOK, single, small, wall mounted		1
1		1	LIG1005	LIGHT, bed head, dimmable, wall mounted		1
1		1	OUT006	SOCKET outlet unswitched 13amp single.		1
7		7	OUT010	SOCKET outlet, switched, 13 amp, twin		1
3		3	OUT131	SOCKET outlet data/voice, double.		1
1		1	OUT206	SOCKET outlet television aerial, single.		1
1		1	OUT471	OUTLET oxygen medical, trunking mounted		1
1		1	OUT476	OUTLET vacuum medical, trunking mounted		1
1		1	RAI1302	RAIL, clinical equipment, wall mounted, max width available		1
1		1	RAI1305	RAIL, Railing (To Suit Length, door)		1
1		1	RAI1306	RAIL, Railing (To Suit Length)		1
2		2	SWC025	SWITCH, light		1
1		1	SWC1090	SWITCH; light, 3 gang		1
1		1	TAP1500	TAP, Markwik 21 Demountable Panel Mixer, Lever Handle, Detachable Spout		1
1		1	THE005	THERMOSTAT		1
1		1	WAR1062	WARDROBE, built in wardrobe, with shelf and 4 no. coat hooks within wardrobe, 600W 400D 1810H		1
1		1	BRA015	BRACKET, flat panel monitor, height adjustable, wall mounted		2
1		1	CLO001	CLOCK battery, wall mounted		2
1		1	DIS011	DISPENSER, barrier cream, disposable single cartridge, wall mounted		2
1		1	DIS013	DISPENSER, paper towel, wall mounted		2
1		1	DIS026	DISPENSER, Medical hand sanitizer, lever action, wall mounted		2
1		1	DIS030	DISPENSER, soap, disposable single cartridge, lever action, wall mounted		2
1		1	DIS438	DISPENSER, disposable gloves set of 3 and disposable apron, wall mounted		2
1		1	TVM1010	TELEVISION monitor, colour, flat panel, 32", wall mounted		2
1		1	BED015	BED variable height, two-way tilt, adjustable backrest and knee-break, built-in bed extension with mattress retainer, electrically operated, on castors, 380-780H 2260/2430L 1010W		3
1		1	CHA307	CHAIR, easy, high back, with open arms, upholstered, wipeable		3
2		2	CHA317	CHAIR, upright, upholstered, stacking, wipeable		3
2		2	HOL004	HOLDER, sack, with lid foot operated, small, freestanding		3

ADB	Schedule of Components by Room	B0305-HFS4
------------	---------------------------------------	-------------------

Project:	2532-RR	HFS Repeatable Rooms, ADB
Department:	EXEM	Exemplar Repeatable Rooms
Room:	B0305-HFS4	Single-bed room, inboard configuration, option 2
Room Number:		Revision Date: 20/03/2020

Quantity			Code	Description	Alt. Code	Grp
New	Trans	Total				
1		1	LOC004	LOCKER, bedside, 4 compartment with lockable section /drawer, towel rail at rear, on castors, 902H 485W 485D		3
1		1	MAT008	MATTRESS, suitable for BED015		3
1		1	TAB073	TABLE, overbed, cantilevered		3

	Activity DataBase	09/07/2020
---	--------------------------	------------

ADB	Room Data Sheet	V1643-HFS1
------------	------------------------	-------------------

Project:	2532-RR	HFS Repeatable Rooms, ADB
Department:	EXEM	Exemplar Repeatable Rooms
Room:	V1643-HFS1	Shower room: en-suite, outboard configuration 1
Room Number:		Revision Date: 23/03/2020

Activities:	<ol style="list-style-type: none"> 1) Use of shower requires assistance. The shower may have an adjustable or fixed tip-up shower seat. 2) Use of toilet requires assistance. 3) Adjustable height hand-wash basin may be used. 4) User may undress and dress in privacy. 5) Hanging outdoor clothing. 6) Hanging clothes and towels. 7) Sanitary chair/commode may be used. 8) Use of shower chair. 9) Mobile hoist may be used. 10) Call systems may be used.
--------------------	---

Personnel:	<p>1 x patient. 1-2 x assistants. Intermittent use.</p>
-------------------	---

Planning Relationships:	En-suite to single-bed room.
--------------------------------	------------------------------

Space Data:	Area (m²):	5.00	Height (mm):	2400
--------------------	------------------------------	------	---------------------	------

Notes:	<p>Design Notes:</p> <ul style="list-style-type: none"> - PORTABLE SHOWER SCREEN: as an option for assisted showering. - DOOR IRONMONGERY: to be part of a Door Schedule. - DRAINAGE: 1No. 110mm pop-up per En-Suite. Pop-up to take waste pipe from WC within room, and WHB / Shower from adjacent En-Suite. <p>Pipes passing through intermediate partition may require fire protection / sleeves depending on:</p> <ol style="list-style-type: none"> a) pipe diameter b) fire strategy specific to project. <p>ADB 2017 Room Note: Assisted access to one side of the toilet requires the second door to the en-suite bedroom to be open. See HBN 00-02.</p> <p>The call repeat lamp is situated over the doors outside the en-suite room and the bedroom.</p> <p>The following items are shown on the drawing but are optional:</p> <ul style="list-style-type: none"> - the bin for the disposal of sanitary towels is only required in female WCs; - mirror, light and shaver outlet. <p>The following items may be provided:</p> <ul style="list-style-type: none"> - fixed shower head.
---------------	--

ADB	Room Environmental Data	V1643-HFS1
------------	--------------------------------	-------------------

Project:	2532-RR	HFS Repeatable Rooms, ADB
Department:	EXEM	Exemplar Repeatable Rooms
Room:	V1643-HFS1	Shower room: en-suite, outboard configuration 1
Room Number:		Revision Date: 23/03/2020

TEMPERATURE AND VENTILATION	Requirements	Notes
Permissible Space Temperature Range(dry bulb) (degC):	18 - 28	
Heating Design Temperature (dry bulb)(degC):	22	
Minimum Air Changes (AC/hr):	10	
Ventilation Type:	E	
Pressure Relative to Adjoining Space:	-ve	
Supply Air: Final Filter Class		
Permissible Relative Humidity Range (%):	Uncontrolled	

General Notes:

LIGHTING	Requirements	Notes
Type Of Control:	N	
Daytime General Service Illuminance (Lux):	200	
Daytime Specific Service Illuminance (Lux):		
Nighttime General Service Illuminance (Lux):		
Nighttime Specific Service Illuminance (Lux):		
Local Task Illuminance (Lux):		
Colour Rendering Required:	Y	
Colour Rendering Required Characteristics (Ra):	80	
Unified Glare Rating Limit (UGRL):	22	
Emergency Escape Route Lighting Required:	Y	In accordance with BS 5266 and Health Technical Memorandums
Standby Lighting Grade - General Lighting:	B	
Standby Lighting Grade - Local Lighting:		

General Notes:

RISK	Requirements	Notes
Clinical Risk Category:		
Non-clinical Business Continuity Risk Category:		

General Notes:

NOISE	Requirements	Notes
Noise Intrusion (dB) 1hr day:	45	
Noise Intrusion (dB) 1hr night:	-	
Noise Intrusion (dB) f night:	-	
Maximum Internal Noise from M&E Services (NR):	40	Total noise of MEP services under normal operation across the range 63Hz to 4kHz inclusive.
Room Sound-insulation Parameters - Privacy:	Moderate	Reference to Table 3 of the Department of Health 'Acoustics: Technical design manual 4032:0.6:England'.
Room Sound-insulation Parameters - Noise Generation:	Typical	
Noise Sensitivity:	Not Sensitive	
Sound-insulation Rating (dB D nT,w):		

General Notes:

SAFETY/FIRE	Requirements	Notes
Maximum Surface Temperature (DegC):	43	
Domestic Hot Water Discharge Temperature (DegC):	41	
Maximum Cold Water Discharge Temperature (DegC):	<20	

General Notes:

Type of Automatic Fire Detection:		Omitted via risk assessment
-----------------------------------	--	-----------------------------

General Notes:

ADB	Room Design Character		V1643-HFS1
Project:	2532-RR	HFS Repeatable Rooms, ADB	
Department:	EXEM	Exemplar Repeatable Rooms	
Room:	V1643-HFS1	Shower room: en-suite, outboard configuration 1	
Room Number:			Revision Date: 23/03/2020
Walls:	<p>Wall finishes to comply with Performance Requirements in HBN 00-10 Part B:Walls and Ceilings (2013)</p> <p>Wall finishes to be selected using the "Selection process for finishes" and "Types of finish by room space" included in HBN 00-10 Part B:Walls and Ceilings.</p>		
Floor:	<p>Floor finishes to comply with Performance Requirements in HBN 00-10 Part A:Flooring (2013)</p> <p>Floor finishes to be selected using the "Selection process for finishes" and "Types of finish by room space" included in HBN 00-10 Part A:Flooring.</p>		
Ceiling:	<p>Ceiling finishes to comply with Performance Requirements in HBN 00-10 Part B:Walls and Ceilings (2013)</p> <p>Ceiling finishes to be selected using the "Selection process for finishes" and "Types of finish by room space" included in HBN 00-10 Part B:Walls and Ceilings.</p>		
Doorsets:	<p>Configuration, glazing, fire rating, security, etc. to be determined by Project Team.</p> <p>HTM 58 (Mar-2005)</p> <p>Refer to HBN 00-04 (May-2007) for effective clear door widths.</p> <p>1 doorset - double leaf sliding/folding: 1 x approx 2200 mm - see HBN 00-02</p> <p>Requirement for hinge protection when areas used by children</p>		
Windows:	Not required		
Internal Glazing:	Not required		
Hatch:	Not required		
Notes:	<p>All finishes selected must have an appropriate risk assessment to accompany the design decision.</p> <p>Infection Control must be consulted as described in Performance Requirements for Building Elements Used in Healthcare Facilities 8941:0.6 England.</p>		

ADB	Schedule of Components by Room	V1643-HFS1
------------	---------------------------------------	-------------------

Project:	2532-RR	HFS Repeatable Rooms, ADB
Department:	EXEM	Exemplar Repeatable Rooms
Room:	V1643-HFS1	Shower room: en-suite, outboard configuration 1
Room Number:		Revision Date: 23/03/2020

Quantity			Code	Description	Alt. Code	Grp
New	Trans	Total				
1		1	BAS1112	BASIN, Portman 21 Washbasin 50cm RH Taphole, No Overflow or Chainstay Hole		1
1		1	CAL1417	PUSH BUTTON staff/patient emergency call, reset and integral/adjacent indicator lamp, wall mounted		1
1		1	CIS005	CISTERN WC/toilet, concealed, reversible. To suit WC		1
2		2	HOO019	HOOK, single, small, wall mounted		1
1		1	LIG063	LUMINAIRE, single fluorescent lamp, wall, 8 watt, 300 mm		1
1		1	MIR002	MIRROR, wall mounted, 900H 300W		1
1		1	MIR026	MIRROR, unbreakable, wall mounted, 1300H 500W		1
1		1	RAI1303	RAIL, rail for shower curtain, L-shape		1
3		3	RAI1304	RAIL, grab rail, horizontal		1
3		3	RAI1307	RAIL, grab rail, horizontal		1
1		1	RAI1308	RAIL, toilet backing rail, with backrest		1
2		2	RAI175	RAIL, grab, hinged, wall mounted, 750mm		1
1		1	SHO018	SHOWER, valve, thermostatic mixer (associated with SHO020).		1
1		1	SHO020	SHOWER, adjustable shower head hand spray (associated with SHO018).		1
2		2	STF200	STORAGE UNIT, mid, shelf, 150H 300W 150D		1
1		1	TAP1501	TAP, A4169AA Contour 21 washbasin mixer thermostatic		1
1		1	WAS105	WASTE DISPOSAL UNIT, sink waste		1
1		1	WCH1008	WC, Contour 21 back to wall rimless raised height WC pan, 70cm projection with horizontal outlet		1
1		1	DIS013	DISPENSER, paper towel, wall mounted		2
1		1	DIS015	DISPENSER, toilet paper, dispense individual sheets, wall mounted		2
1		1	DIS030	DISPENSER, soap, disposable single cartridge, lever action, wall mounted		2
1		1	BIN028	BIN, disposal, sealed, operated with one hand, nominal 420H 155W 490D		3
1		1	CHA1396	CHAIR, shower, mobile		3
1		1	HOL004	HOLDER, sack, with lid foot operated, small, freestanding		3

ADB	Room Data Sheet	V1643-HFS2
------------	------------------------	-------------------

Project:	2532-RR	HFS Repeatable Rooms, ADB
Department:	EXEM	Exemplar Repeatable Rooms
Room:	V1643-HFS2	Shower room: en-suite, outboard configuration 2
Room Number:		Revision Date: 23/03/2020

Activities:	<ol style="list-style-type: none"> 1) Use of shower requires assistance. The shower may have an adjustable or fixed tip-up shower seat. 2) Use of toilet requires assistance. 3) Adjustable height hand-wash basin may be used. 4) User may undress and dress in privacy. 5) Hanging outdoor clothing. 6) Hanging clothes and towels. 7) Sanitary chair/commode may be used. 8) Use of shower chair. 9) Mobile hoist may be used. 10) Call systems may be used.
--------------------	---

Personnel:	<p>1 x patient. 1-2 x assistants. Intermittent use.</p>
-------------------	---

Planning Relationships:	En-suite to single-bed room.
--------------------------------	------------------------------

Space Data:	Area (m²):	5.00	Height (mm):	2400
--------------------	------------------------------	------	---------------------	------

Notes:	<p>Design Notes:</p> <ul style="list-style-type: none"> - PORTABLE SHOWER SCREEN: as an option for assisted showering. - DOOR IRONMONGERY: to be part of a Door Schedule. - DRAINAGE: 1No. 110mm pop-up per En-Suite. <p>Pop-up to take waste pipe from WC within room, and WHB / Shower from adjacent En-Suite.</p> <p>Pipes passing through intermediate partition may require fire protection / sleeves depending on:</p> <ol style="list-style-type: none"> a) pipe diameter b) fire strategy specific to project. <p>ADB 2017 Room Note:</p> <p>Assisted access to one side of the toilet requires the second door to the en-suite bedroom to be open. See HBN 00-02.</p> <p>The call repeat lamp is situated over the doors outside the en-suite room and the bedroom.</p> <p>The following items are shown on the drawing but are optional:</p> <ul style="list-style-type: none"> - the bin for the disposal of sanitary towels is only required in female WCs; - mirror, light and shaver outlet. <p>The following items may be provided:</p> <ul style="list-style-type: none"> - fixed shower head.
---------------	--

ADB	Room Environmental Data	V1643-HFS2
------------	--------------------------------	-------------------

Project:	2532-RR	HFS Repeatable Rooms, ADB
Department:	EXEM	Exemplar Repeatable Rooms
Room:	V1643-HFS2	Shower room: en-suite, outboard configuration 2
Room Number:		Revision Date: 23/03/2020

TEMPERATURE AND VENTILATION	Requirements	Notes
Permissible Space Temperature Range(dry bulb) (degC):	18 - 28	
Heating Design Temperature (dry bulb)(degC):	22	
Minimum Air Changes (AC/hr):	10	
Ventilation Type:	E	
Pressure Relative to Adjoining Space:	-ve	
Supply Air: Final Filter Class		
Permissible Relative Humidity Range (%):	Uncontrolled	

General Notes:

LIGHTING	Requirements	Notes
Type Of Control:	N	
Daytime General Service Illuminance (Lux):	200	
Daytime Specific Service Illuminance (Lux):		
Nighttime General Service Illuminance (Lux):		
Nighttime Specific Service Illuminance (Lux):		
Local Task Illuminance (Lux):		
Colour Rendering Required:	Y	
Colour Rendering Required Characteristics (Ra):	80	
Unified Glare Rating Limit (UGRL):	22	
Emergency Escape Route Lighting Required:	Y	In accordance with BS 5266 and Health Technical Memorandums
Standby Lighting Grade - General Lighting:	B	
Standby Lighting Grade - Local Lighting:		

General Notes:

RISK	Requirements	Notes
Clinical Risk Category:		
Non-clinical Business Continuity Risk Category:		

General Notes:

NOISE	Requirements	Notes
Noise Intrusion (dB) 1hr day:	45	
Noise Intrusion (dB) 1hr night:	-	
Noise Intrusion (dB) f night:	-	
Maximum Internal Noise from M&E Services (NR):	40	Total noise of MEP services under normal operation across the range 63Hz to 4kHz inclusive.
Room Sound-insulation Parameters - Privacy:	Moderate	Reference to Table 3 of the Department of Health 'Acoustics: Technical design manual 4032:0.6:England'.
Room Sound-insulation Parameters - Noise Generation:	Typical	
Noise Sensitivity:	Not Sensitive	
Sound-insulation Rating (dB D nT,w):		

General Notes:

SAFETY/FIRE	Requirements	Notes
Maximum Surface Temperature (DegC):	43	
Domestic Hot Water Discharge Temperature (DegC):	41	
Maximum Cold Water Discharge Temperature (DegC):	<20	

General Notes:

Type of Automatic Fire Detection:		Omitted via risk assessment
-----------------------------------	--	-----------------------------

General Notes:

	Activity DataBase	09/07/2020
---	--------------------------	------------

ADB	Room Design Character		V1643-HFS2
Project:	2532-RR	HFS Repeatable Rooms, ADB	
Department:	EXEM	Exemplar Repeatable Rooms	
Room:	V1643-HFS2	Shower room: en-suite, outboard configuration 2	
Room Number:			Revision Date: 23/03/2020
Walls:	<p>Wall finishes to comply with Performance Requirements in HBN 00-10 Part B:Walls and Ceilings (2013)</p> <p>Wall finishes to be selected using the "Selection process for finishes" and "Types of finish by room space" included in HBN 00-10 Part B:Walls and Ceilings.</p>		
Floor:	<p>Floor finishes to comply with Performance Requirements in HBN 00-10 Part A:Flooring (2013)</p> <p>Floor finishes to be selected using the "Selection process for finishes" and "Types of finish by room space" included in HBN 00-10 Part A:Flooring.</p>		
Ceiling:	<p>Ceiling finishes to comply with Performance Requirements in HBN 00-10 Part B:Walls and Ceilings (2013)</p> <p>Ceiling finishes to be selected using the "Selection process for finishes" and "Types of finish by room space" included in HBN 00-10 Part B:Walls and Ceilings.</p>		
Doorsets:	<p>Configuration, glazing, fire rating, security, etc. to be determined by Project Team.</p> <p>HTM 58 (Mar-2005)</p> <p>Refer to HBN 00-04 (May-2007) for effective clear door widths.</p> <p>1 doorset - double leaf sliding/folding: 1 x approx 2200 mm - see HBN 00-02</p> <p>Requirement for hinge protection when areas used by children</p>		
Windows:	Not required		
Internal Glazing:	Not required		
Hatch:	Not required		
Notes:	<p>All finishes selected must have an appropriate risk assessment to accompany the design decision.</p> <p>Infection Control must be consulted as described in Performance Requirements for Building Elements Used in Healthcare Facilities 8941:0.6 England.</p>		

ADB	Schedule of Components by Room	V1643-HFS2
------------	---------------------------------------	-------------------

Project:	2532-RR	HFS Repeatable Rooms, ADB
Department:	EXEM	Exemplar Repeatable Rooms
Room:	V1643-HFS2	Shower room: en-suite, outboard configuration 2
Room Number:		Revision Date: 23/03/2020

Quantity			Code	Description	Alt. Code	Grp
New	Trans	Total				
1		1	BAS1112	BASIN, Portman 21 Washbasin 50cm RH Taphole, No Overflow or Chainstay Hole		1
1		1	CAL1417	PUSH BUTTON staff/patient emergency call, reset and integral/adjacent indicator lamp, wall mounted		1
1		1	CIS005	CISTERN WC/toilet, concealed, reversible. To suit WC		1
2		2	HOO019	HOOK, single, small, wall mounted		1
1		1	LIG063	LUMINAIRE, single fluorescent lamp, wall, 8 watt, 300 mm		1
1		1	MIR002	MIRROR, wall mounted, 900H 300W		1
1		1	MIR026	MIRROR, unbreakable, wall mounted, 1300H 500W		1
1		1	RAI1303H	RAIL, rail for shower curtain, L-shape (Handed)		1
3		3	RAI1304	RAIL, grab rail, horizontal		1
3		3	RAI1307	RAIL, grab rail, horizontal		1
1		1	RAI1308	RAIL, toilet backing rail, with backrest		1
2		2	RAI175	RAIL, grab, hinged, wall mounted, 750mm		1
1		1	SHO018	SHOWER, valve, thermostatic mixer (associated with SHO020).		1
1		1	SHO020	SHOWER, adjustable shower head hand spray (associated with SHO018).		1
2		2	STF200	STORAGE UNIT, mid, shelf, 150H 300W 150D		1
1		1	TAP1501	TAP, A4169AA Contour 21 washbasin mixer thermostatic		1
1		1	WAS105	WASTE DISPOSAL UNIT, sink waste		1
1		1	WCH1008	WC, Contour 21 back to wall rimless raised height WC pan, 70cm projection with horizontal outlet		1
1		1	DIS013	DISPENSER, paper towel, wall mounted		2
1		1	DIS015	DISPENSER, toilet paper, dispense individual sheets, wall mounted		2
1		1	DIS030	DISPENSER, soap, disposable single cartridge, lever action, wall mounted		2
1		1	BIN028	BIN, disposal, sealed, operated with one hand, nominal 420H 155W 490D		3
1		1	CHA1396	CHAIR, shower, mobile		3
1		1	HOL004	HOLDER, sack, with lid foot operated, small, freestanding		3

ADB	Room Data Sheet	V1643-HFS3
------------	------------------------	-------------------

Project:	2532-RR	HFS Repeatable Rooms, ADB
Department:	EXEM	Exemplar Repeatable Rooms
Room:	V1643-HFS3	Shower room: en-suite, inboard configuration 1
Room Number:		Revision Date: 23/03/2020

Activities:	<ol style="list-style-type: none"> 1) Use of shower requires assistance. The shower may have an adjustable or fixed tip-up shower seat. 2) Use of toilet requires assistance. 3) Adjustable height hand-wash basin may be used. 4) User may undress and dress in privacy. 5) Hanging outdoor clothing. 6) Hanging clothes and towels. 7) Sanitary chair/commode may be used. 8) Use of shower chair. 9) Mobile hoist may be used. 10) Call systems may be used.
--------------------	---

Personnel:	<p>1 x patient. 1-2 x assistants. Intermittent use.</p>
-------------------	---

Planning Relationships:	En-suite to single-bed room.
--------------------------------	------------------------------

Space Data:	Area (m²):	5.00	Height (mm):	2400
--------------------	------------------------------	------	---------------------	------

Notes:	<p>Design Notes:</p> <ul style="list-style-type: none"> - PORTABLE SHOWER SCREEN: as an option for assisted showering. - DOOR IRONMONGERY: to be part of a Door Schedule. - DRAINAGE: 1No. 110mm pop-up per En-Suite. <p>Pop-up to take waste pipe from WC within room, and WHB / Shower from adjacent En-Suite.</p> <p>Pipes passing through intermediate partition may require fire protection / sleeves depending on:</p> <ol style="list-style-type: none"> a) pipe diameter b) fire strategy specific to project. <p>ADB 2017 Room Note:</p> <p>Assisted access to one side of the toilet requires the second door to the en-suite bedroom to be open. See HBN 00-02.</p> <p>The call repeat lamp is situated over the doors outside the en-suite room and the bedroom.</p> <p>The following items are shown on the drawing but are optional:</p> <ul style="list-style-type: none"> - the bin for the disposal of sanitary towels is only required in female WCs; - mirror, light and shaver outlet. <p>The following items may be provided:</p> <ul style="list-style-type: none"> - fixed shower head.
---------------	--

ADB	Room Environmental Data	V1643-HFS3
------------	--------------------------------	-------------------

Project:	2532-RR	HFS Repeatable Rooms, ADB
Department:	EXEM	Exemplar Repeatable Rooms
Room:	V1643-HFS3	Shower room: en-suite, inboard configuration 1
Room Number:		Revision Date: 23/03/2020

TEMPERATURE AND VENTILATION	Requirements	Notes
Permissible Space Temperature Range(dry bulb) (degC):	18 - 28	
Heating Design Temperature (dry bulb)(degC):	22	
Minimum Air Changes (AC/hr):	10	
Ventilation Type:	E	
Pressure Relative to Adjoining Space:	-ve	
Supply Air: Final Filter Class		
Permissible Relative Humidity Range (%):	Uncontrolled	

General Notes:

LIGHTING	Requirements	Notes
Type Of Control:	N	
Daytime General Service Illuminance (Lux):	200	
Daytime Specific Service Illuminance (Lux):		
Nighttime General Service Illuminance (Lux):		
Nighttime Specific Service Illuminance (Lux):		
Local Task Illuminance (Lux):		
Colour Rendering Required:	Y	
Colour Rendering Required Characteristics (Ra):	80	
Unified Glare Rating Limit (UGRL):	22	
Emergency Escape Route Lighting Required:	Y	In accordance with BS 5266 and Health Technical Memorandums
Standby Lighting Grade - General Lighting:	B	
Standby Lighting Grade - Local Lighting:		

General Notes:

RISK	Requirements	Notes
Clinical Risk Category:		
Non-clinical Business Continuity Risk Category:		

General Notes:

NOISE	Requirements	Notes
Noise Intrusion (dB) 1hr day:	45	
Noise Intrusion (dB) 1hr night:	-	
Noise Intrusion (dB) f night:	-	
Maximum Internal Noise from M&E Services (NR):	40	Total noise of MEP services under normal operation across the range 63Hz to 4kHz inclusive.
Room Sound-insulation Parameters - Privacy:	Moderate	Reference to Table 3 of the Department of Health 'Acoustics: Technical design manual 4032:0.6:England'.
Room Sound-insulation Parameters - Noise Generation:	Typical	
Noise Sensitivity:	Not Sensitive	
Sound-insulation Rating (dB D nT,w):		

General Notes:

SAFETY/FIRE	Requirements	Notes
Maximum Surface Temperature (DegC):	43	
Domestic Hot Water Discharge Temperature (DegC):	41	
Maximum Cold Water Discharge Temperature (DegC):	<20	

General Notes:

Type of Automatic Fire Detection:		Omitted via risk assessment
-----------------------------------	--	-----------------------------

General Notes:

	Activity DataBase	09/07/2020
---	--------------------------	-------------------

ADB	Room Design Character		V1643-HFS3
Project:	2532-RR	HFS Repeatable Rooms, ADB	
Department:	EXEM	Exemplar Repeatable Rooms	
Room:	V1643-HFS3	Shower room: en-suite, inboard configuration 1	
Room Number:			Revision Date: 23/03/2020
Walls:	<p>Wall finishes to comply with Performance Requirements in HBN 00-10 Part B:Walls and Ceilings (2013)</p> <p>Wall finishes to be selected using the "Selection process for finishes" and "Types of finish by room space" included in HBN 00-10 Part B:Walls and Ceilings.</p>		
Floor:	<p>Floor finishes to comply with Performance Requirements in HBN 00-10 Part A:Flooring (2013)</p> <p>Floor finishes to be selected using the "Selection process for finishes" and "Types of finish by room space" included in HBN 00-10 Part A:Flooring.</p>		
Ceiling:	<p>Ceiling finishes to comply with Performance Requirements in HBN 00-10 Part B:Walls and Ceilings (2013)</p> <p>Ceiling finishes to be selected using the "Selection process for finishes" and "Types of finish by room space" included in HBN 00-10 Part B:Walls and Ceilings.</p>		
Doorsets:	<p>Configuration, glazing, fire rating, security, etc. to be determined by Project Team.</p> <p>HTM 58 (Mar-2005)</p> <p>Refer to HBN 00-04 (May-2007) for effective clear door widths.</p> <p>1 doorset - double leaf sliding/folding: 1 x approx 2200 mm - see HBN 00-02</p> <p>Requirement for hinge protection when areas used by children</p>		
Windows:	Not required		
Internal Glazing:	Not required		
Hatch:	Not required		
Notes:	<p>All finishes selected must have an appropriate risk assessment to accompany the design decision.</p> <p>Infection Control must be consulted as described in Performance Requirements for Building Elements Used in Healthcare Facilities 8941:0.6 England.</p>		

ADB	Schedule of Components by Room	V1643-HFS3
------------	---------------------------------------	-------------------

Project:	2532-RR	HFS Repeatable Rooms, ADB
Department:	EXEM	Exemplar Repeatable Rooms
Room:	V1643-HFS3	Shower room: en-suite, inboard configuration 1
Room Number:		Revision Date: 23/03/2020

Quantity			Code	Description	Alt. Code	Grp
New	Trans	Total				
1		1	BAS1112	BASIN, Portman 21 Washbasin 50cm RH Taphole, No Overflow or Chainstay Hole		1
1		1	CAL1417	PUSH BUTTON staff/patient emergency call, reset and integral/adjacent indicator lamp, wall mounted		1
1		1	CIS005	CISTERN WC/toilet, concealed, reversible. To suit WC		1
2		2	HOO019	HOOK, single, small, wall mounted		1
1		1	LIG063	LUMINAIRE, single fluorescent lamp, wall, 8 watt, 300 mm		1
1		1	MIR002	MIRROR, wall mounted, 900H 300W		1
1		1	MIR026	MIRROR, unbreakable, wall mounted, 1300H 500W		1
1		1	RAI1303	RAIL, rail for shower curtain, L-shape		1
3		3	RAI1304	RAIL, grab rail, horizontal		1
3		3	RAI1307	RAIL, grab rail, horizontal		1
1		1	RAI1308	RAIL, toilet backing rail, with backrest		1
2		2	RAI175	RAIL, grab, hinged, wall mounted, 750mm		1
1		1	SHO018	SHOWER, valve, thermostatic mixer (associated with SHO020).		1
1		1	SHO020	SHOWER, adjustable shower head hand spray (associated with SHO018).		1
2		2	STF200	STORAGE UNIT, mid, shelf, 150H 300W 150D		1
1		1	TAP1501	TAP, A4169AA Contour 21 washbasin mixer thermostatic		1
1		1	WAS105	WASTE DISPOSAL UNIT, sink waste		1
1		1	WCH1008	WC, Contour 21 back to wall rimless raised height WC pan, 70cm projection with horizontal outlet		1
1		1	DIS013	DISPENSER, paper towel, wall mounted		2
1		1	DIS015	DISPENSER, toilet paper, dispense individual sheets, wall mounted		2
1		1	DIS030	DISPENSER, soap, disposable single cartridge, lever action, wall mounted		2
1		1	BIN028	BIN, disposal, sealed, operated with one hand, nominal 420H 155W 490D		3
1		1	CHA1396	CHAIR, shower, mobile		3
1		1	HOL004	HOLDER, sack, with lid foot operated, small, freestanding		3

ADB	Room Data Sheet	V1643-HFS4
------------	------------------------	-------------------

Project:	2532-RR	HFS Repeatable Rooms, ADB
Department:	EXEM	Exemplar Repeatable Rooms
Room:	V1643-HFS4	Shower room: en-suite, inboard configuration 2
Room Number:		Revision Date: 23/03/2020

Activities:	<ol style="list-style-type: none"> 1) Use of shower requires assistance. The shower may have an adjustable or fixed tip-up shower seat. 2) Use of toilet requires assistance. 3) Adjustable height hand-wash basin may be used. 4) User may undress and dress in privacy. 5) Hanging outdoor clothing. 6) Hanging clothes and towels. 7) Sanitary chair/commode may be used. 8) Use of shower chair. 9) Mobile hoist may be used. 10) Call systems may be used.
--------------------	---

Personnel:	<p>1 x patient. 1-2 x assistants. Intermittent use.</p>
-------------------	---

Planning Relationships:	En-suite to single-bed room.
--------------------------------	------------------------------

Space Data:	Area (m²):	5.00	Height (mm):	2400
--------------------	------------------------------	------	---------------------	------

Notes:	<p>Design Notes:</p> <ul style="list-style-type: none"> - PORTABLE SHOWER SCREEN: as an option for assisted showering. - DOOR IRONMONGERY: to be part of a Door Schedule. - DRAINAGE: 1No. 110mm pop-up per En-Suite. <p>Pop-up to take waste pipe from WC within room, and WHB / Shower from adjacent En-Suite.</p> <p>Pipes passing through intermediate partition may require fire protection / sleeves depending on:</p> <ol style="list-style-type: none"> a) pipe diameter b) fire strategy specific to project. <p>ADB 2017 Room Note:</p> <p>Assisted access to one side of the toilet requires the second door to the en-suite bedroom to be open. See HBN 00-02.</p> <p>The call repeat lamp is situated over the doors outside the en-suite room and the bedroom.</p> <p>The following items are shown on the drawing but are optional:</p> <ul style="list-style-type: none"> - the bin for the disposal of sanitary towels is only required in female WCs; - mirror, light and shaver outlet. <p>The following items may be provided:</p> <ul style="list-style-type: none"> - fixed shower head.
---------------	--

ADB	Room Environmental Data	V1643-HFS4
------------	--------------------------------	-------------------

Project:	2532-RR	HFS Repeatable Rooms, ADB
Department:	EXEM	Exemplar Repeatable Rooms
Room:	V1643-HFS4	Shower room: en-suite, inboard configuration 2
Room Number:		Revision Date: 23/03/2020

TEMPERATURE AND VENTILATION	Requirements	Notes
Permissible Space Temperature Range(dry bulb) (degC):	18 - 28	
Heating Design Temperature (dry bulb)(degC):	22	
Minimum Air Changes (AC/hr):	10	
Ventilation Type:	E	
Pressure Relative to Adjoining Space:	-ve	
Supply Air: Final Filter Class		
Permissible Relative Humidity Range (%):	Uncontrolled	

General Notes:

LIGHTING	Requirements	Notes
Type Of Control:	N	
Daytime General Service Illuminance (Lux):	200	
Daytime Specific Service Illuminance (Lux):		
Nighttime General Service Illuminance (Lux):		
Nighttime Specific Service Illuminance (Lux):		
Local Task Illuminance (Lux):		
Colour Rendering Required:	Y	
Colour Rendering Required Characteristics (Ra):	80	
Unified Glare Rating Limit (UGRL):	22	
Emergency Escape Route Lighting Required:	Y	In accordance with BS 5266 and Health Technical Memorandums
Standby Lighting Grade - General Lighting:	B	
Standby Lighting Grade - Local Lighting:		

General Notes:

RISK	Requirements	Notes
Clinical Risk Category:		
Non-clinical Business Continuity Risk Category:		

General Notes:

NOISE	Requirements	Notes
Noise Intrusion (dB) 1hr day:	45	
Noise Intrusion (dB) 1hr night:	-	
Noise Intrusion (dB) f night:	-	
Maximum Internal Noise from M&E Services (NR):	40	Total noise of MEP services under normal operation across the range 63Hz to 4kHz inclusive.
Room Sound-insulation Parameters - Privacy:	Moderate	Reference to Table 3 of the Department of Health 'Acoustics: Technical design manual 4032:0.6:England'.
Room Sound-insulation Parameters - Noise Generation:	Typical	
Noise Sensitivity:	Not Sensitive	
Sound-insulation Rating (dB D nT,w):		

General Notes:

SAFETY/FIRE	Requirements	Notes
Maximum Surface Temperature (DegC):	43	
Domestic Hot Water Discharge Temperature (DegC):	41	
Maximum Cold Water Discharge Temperature (DegC):	<20	

General Notes:

Type of Automatic Fire Detection:		Omitted via risk assessment
-----------------------------------	--	-----------------------------

General Notes:

	Activity DataBase	09/07/2020
---	--------------------------	-------------------

ADB	Room Design Character		V1643-HFS4
Project:	2532-RR	HFS Repeatable Rooms, ADB	
Department:	EXEM	Exemplar Repeatable Rooms	
Room:	V1643-HFS4	Shower room: en-suite, inboard configuration 2	
Room Number:			Revision Date: 23/03/2020
Walls:	<p>Wall finishes to comply with Performance Requirements in HBN 00-10 Part B:Walls and Ceilings (2013)</p> <p>Wall finishes to be selected using the "Selection process for finishes" and "Types of finish by room space" included in HBN 00-10 Part B:Walls and Ceilings.</p>		
Floor:	<p>Floor finishes to comply with Performance Requirements in HBN 00-10 Part A:Flooring (2013)</p> <p>Floor finishes to be selected using the "Selection process for finishes" and "Types of finish by room space" included in HBN 00-10 Part A:Flooring.</p>		
Ceiling:	<p>Ceiling finishes to comply with Performance Requirements in HBN 00-10 Part B:Walls and Ceilings (2013)</p> <p>Ceiling finishes to be selected using the "Selection process for finishes" and "Types of finish by room space" included in HBN 00-10 Part B:Walls and Ceilings.</p>		
Doorsets:	<p>Configuration, glazing, fire rating, security, etc. to be determined by Project Team.</p> <p>HTM 58 (Mar-2005)</p> <p>Refer to HBN 00-04 (May-2007) for effective clear door widths.</p> <p>1 doorset - double leaf sliding/folding: 1 x approx 2200 mm - see HBN 00-02</p> <p>Requirement for hinge protection when areas used by children</p>		
Windows:	Not required		
Internal Glazing:	Not required		
Hatch:	Not required		
Notes:	<p>All finishes selected must have an appropriate risk assessment to accompany the design decision.</p> <p>Infection Control must be consulted as described in Performance Requirements for Building Elements Used in Healthcare Facilities 8941:0.6 England.</p>		

ADB	Schedule of Components by Room	V1643-HFS4
------------	---------------------------------------	-------------------

Project:	2532-RR	HFS Repeatable Rooms, ADB
Department:	EXEM	Exemplar Repeatable Rooms
Room:	V1643-HFS4	Shower room: en-suite, inboard configuration 2
Room Number:		Revision Date: 23/03/2020

Quantity			Code	Description	Alt. Code	Grp
New	Trans	Total				
1		1	BAS1112	BASIN, Portman 21 Washbasin 50cm RH Taphole, No Overflow or Chainstay Hole		1
1		1	CAL1417	PUSH BUTTON staff/patient emergency call, reset and integral/adjacent indicator lamp, wall mounted		1
1		1	CIS005	CISTERN WC/toilet, concealed, reversible. To suit WC		1
2		2	HOO019	HOOK, single, small, wall mounted		1
1		1	LIG063	LUMINAIRE, single fluorescent lamp, wall, 8 watt, 300 mm		1
1		1	MIR002	MIRROR, wall mounted, 900H 300W		1
1		1	MIR026	MIRROR, unbreakable, wall mounted, 1300H 500W		1
1		1	RAI1303H	RAIL, rail for shower curtain, L-shape (Handed)		1
3		3	RAI1304	RAIL, grab rail, horizontal		1
3		3	RAI1307	RAIL, grab rail, horizontal		1
1		1	RAI1308	RAIL, toilet backing rail, with backrest		1
2		2	RAI175	RAIL, grab, hinged, wall mounted, 750mm		1
1		1	SHO018	SHOWER, valve, thermostatic mixer (associated with SHO020).		1
1		1	SHO020	SHOWER, adjustable shower head hand spray (associated with SHO018).		1
2		2	STF200	STORAGE UNIT, mid, shelf, 150H 300W 150D		1
1		1	TAP1501	TAP, A4169AA Contour 21 washbasin mixer thermostatic		1
1		1	WAS105	WASTE DISPOSAL UNIT, sink waste		1
1		1	WCH1008	WC, Contour 21 back to wall rimless raised height WC pan, 70cm projection with horizontal outlet		1
1		1	DIS013	DISPENSER, paper towel, wall mounted		2
1		1	DIS015	DISPENSER, toilet paper, dispense individual sheets, wall mounted		2
1		1	DIS030	DISPENSER, soap, disposable single cartridge, lever action, wall mounted		2
1		1	BIN028	BIN, disposal, sealed, operated with one hand, nominal 420H 155W 490D		3
1		1	CHA1396	CHAIR, shower, mobile		3
1		1	HOL004	HOLDER, sack, with lid foot operated, small, freestanding		3

ADB	Room Data Sheet	C0237-HFS
------------	------------------------	------------------

Project:	2532-RR	HFS Repeatable Rooms, ADB
Department:	EXEM	Exemplar Repeatable Rooms
Room:	C0237-HFS	Consulting/examination room: double-sided couch access
Room Number:		Revision Date: 17/03/2020

Activities:	<ol style="list-style-type: none"> 1) Call systems may be used. 2) Consultations may take place. 3) Sterile supplies and consumables are stored on a trolley. 4) User may undress and dress in privacy. 5) Electronic patient records (EPRs) may be accessed and updated. 6) Clinical hand washing. 7) Discussions and interviews may take place. 8) Carrying out examinations and assessment of patient. 9) Patient may arrive on foot or in a wheelchair. 10) Examinations of the patient may be carried out from one or both sides of the couch. 11) Minimally invasive clinical procedures may be undertaken from one or both sides of the couch.
--------------------	--

Personnel:	1 x patient. 1-2 x staff. 1 x other (escort).
-------------------	---

Planning Relationships:	
--------------------------------	--

Space Data:	Area (m²):	15.00	Height (mm):	2700
--------------------	------------------------------	-------	---------------------	------

Notes:

Design Notes:

- LIG053 Luminaire specification to be confirmed
- Staff should risk assess the location of the patient chairs in the Consulting Room; this is to make staff aware of the hazards of patient chairs being located between the door and the work station.

Highlighted Areas:

- Window Zone: Extent / Dimensions to be project specific
- Door Vision Panel / Vistamatic: with Fan light: Extent / Dimensions to be project specific
- Desk: option for rise & fall desk with socket provision (if required) to be project specific.

ADB 2017 Room note:

This room includes a 3-section couch, alternatively, it may accommodate a 2-section couch or specialist couch.

The call repeat lamp is situated over the door outside the room.

The following items are shown on the room layout but are optional:

- patient/staff call (although expected where a patient will be left unattended);
- room in use switch and indicator.

The following items may be provided:

- a small printer;
- a small lockable drawer;
- dimming switch.

Piped medical gases may be required for some clinical specialties.

Workstations have been placed in Consult/ exam rooms at 900mm. Local policy may prefer a desk up to 1200mm to facilitate working practice.

Separate data and voice outlets may be used where structure cabling solutions are not available.

ADB	Room Environmental Data	C0237-HFS
------------	--------------------------------	------------------

Project:	2532-RR	HFS Repeatable Rooms, ADB
Department:	EXEM	Exemplar Repeatable Rooms
Room:	C0237-HFS	Consulting/examination room: double-sided couch access
Room Number:		Revision Date: 17/03/2020

TEMPERATURE AND VENTILATION	Requirements	Notes
Permissible Space Temperature Range(dry bulb) (degC):	18 - 28	
Heating Design Temperature (dry bulb)(degC):	22	
Minimum Air Changes (AC/hr):	6	
Ventilation Type:	S/E/N	
Pressure Relative to Adjoining Space:	Bal or -ve	
Supply Air: Final Filter Class	G4	
Permissible Relative Humidity Range (%):	Uncontrolled	

General Notes:

LIGHTING	Requirements	Notes
Type Of Control:	N	
Daytime General Service Illuminance (Lux):	300	WP
Daytime Specific Service Illuminance (Lux):		
Nighttime General Service Illuminance (Lux):		
Nighttime Specific Service Illuminance (Lux):		
Local Task Illuminance (Lux):	1000	Bed level (provided by the mobile examination lamp)
Colour Rendering Required:	Y	
Colour Rendering Required Characteristics (Ra):	80	
Unified Glare Rating Limit (UGRL):	19	
Emergency Escape Route Lighting Required:	Y	In accordance with BS 5266 and Health Technical Memorandums
Standby Lighting Grade - General Lighting:	B	
Standby Lighting Grade - Local Lighting:		

General Notes: Refer to SLL Lighting Guide 2 for more detailed guidance

RISK	Requirements	Notes
Clinical Risk Category:		
Non-clinical Business Continuity Risk Category:		

General Notes:

NOISE	Requirements	Notes
Noise Intrusion (dB) 1hr day:	40	
Noise Intrusion (dB) 1hr night:	-	
Noise Intrusion (dB) f night:	-	
Maximum Internal Noise from M&E Services (NR):	35	Total noise of MEP services under normal operation across the range 63Hz to 4kHz inclusive.
Room Sound-insulation Parameters - Privacy:	Confidential	Reference to Table 3 of the Department of Health 'Acoustics: Technical design manual 4032:0.6:England'.
Room Sound-insulation Parameters - Noise Generation:	Typical	
Noise Sensitivity:	Medium	
Sound-insulation Rating (dB D nT,w):		

General Notes:

SAFETY/FIRE	Requirements	Notes
Maximum Surface Temperature (DegC):	43	
Domestic Hot Water Discharge Temperature (DegC):	41	
Maximum Cold Water Discharge Temperature (DegC):	<20	

General Notes:

Type of Automatic Fire Detection:	Smoke	
-----------------------------------	-------	--

General Notes:

ADB	Room Design Character		C0237-HFS
Project:	2532-RR	HFS Repeatable Rooms, ADB	
Department:	EXEM	Exemplar Repeatable Rooms	
Room:	C0237-HFS	Consulting/examination room: double-sided couch access	
Room Number:			Revision Date: 17/03/2020
Walls:	<p>Wall finishes to comply with Performance Requirements in HBN 00-10 Part B:Walls and Ceilings (2013)</p> <p>Wall finishes to be selected using the "Selection process for finishes" and "Types of finish by room space" included in HBN 00-10 Part B:Walls and Ceilings.</p>		
Floor:	<p>Floor finishes to comply with Performance Requirements in HBN 00-10 Part A:Flooring (2013)</p> <p>Floor finishes to be selected using the "Selection process for finishes" and "Types of finish by room space" included in HBN 00-10 Part A:Flooring.</p>		
Ceiling:	<p>Ceiling finishes to comply with Performance Requirements in HBN 00-10 Part B:Walls and Ceilings (2013)</p> <p>Ceiling finishes to be selected using the "Selection process for finishes" and "Types of finish by room space" included in HBN 00-10 Part B:Walls and Ceilings.</p>		
Doorsets:	<p>Configuration, glazing, fire rating, security, etc. to be determined by Project Team.</p> <p>HTM 58 (Mar-2005)</p> <p>Refer to HBN 00-04 (May-2007) for effective clear door widths.</p> <p>1 doorset: 1 x personnel, wheelchair & equipment access (1000mm)</p> <p>Requirement for hinge protection when areas used by children</p>		
Windows:	<p>Desirable - Project Option</p> <p>Clear glass with solar and privacy control</p> <p>Designation to be validated against current documentation (HTM 55 archived).</p>		
Internal Glazing:	Not required		
Hatch:	Not required		
Notes:	<p>All finishes selected must have an appropriate risk assessment to accompany the design decision.</p> <p>Infection Control must be consulted as described in Performance Requirements for Building Elements Used in Healthcare Facilities 8941:0.6 England.</p>		

ADB	Schedule of Components by Room	C0237-HFS
------------	---------------------------------------	------------------

Project:	2532-RR	HFS Repeatable Rooms, ADB
Department:	EXEM	Exemplar Repeatable Rooms
Room:	C0237-HFS	Consulting/examination room: double-sided couch access
Room Number:		Revision Date: 17/03/2020

Quantity			Code	Description	Alt. Code	Grp
New	Trans	Total				
1		1	BAS1113	BASIN, Contour 21 back outlet washbasin, 50cm, no tapholes, no overflow, no chainstay hole		1
1		1	CAL007	PULL/PUSH BUTTON, staff emergency call, reset and integral/adjacent indicator lamp		1
1		1	CAN1012	CANOPY, size to suit unit below		1
3		3	CUP1754	CUPBOARD; Wall Mounted, option for locking (keys to be suited), 900H 450W 370D		1
1		1	HOO019	HOOK, single, small, wall mounted		1
1		1	LIG053	LUMINAIRE, examination, ceiling, adjustable, 1000 lux		1
1		1	OUT006	SOCKET outlet unswitched 13amp single.		1
7		7	OUT010	SOCKET outlet, switched, 13 amp, twin		1
2		2	OUT131	SOCKET outlet data/voice, double.		1
1		1	SWC025	SWITCH, light		1
1		1	TAP1500	TAP, Markwik 21 Demountable Panel Mixer, Lever Handle, Detachable Spout		1
1		1	THE005	THERMOSTAT		1
1		1	TRA1573	TRACK, curtain around bed, 2450W 3000D		1
1		1	WOR1771	WORKTOP; Length as designed		1
1		1	BOA022	BOARD, display/notice, magnetic, wall mounted, 900H 600W		2
1		1	CLO001	CLOCK battery, wall mounted		2
1		1	CUP1755L	CUPBOARD; Lockable, 860H 450W 370D, Left Handed		2
2		2	CUP1755R	CUPBOARD; Lockable, 860H 450W 370D, Right Handed		2
1		1	DIS011	DISPENSER, barrier cream, disposable single cartridge, wall mounted		2
1		1	DIS013	DISPENSER, paper towel, wall mounted		2
1		1	DIS026	DISPENSER, Medical hand sanitizer, lever action, wall mounted		2
1		1	DIS030	DISPENSER, soap, disposable single cartridge, lever action, wall mounted		2
1		1	DIS438	DISPENSER, disposable gloves set of 3 and disposable apron, wall mounted		2
1		1	ART100	ART, Artwork		3
1		1	CHA301	CHAIR, swivel, height adjustable, high back, with arms, wipeable, 5 star base, on castors		3
1		1	CHA317	CHAIR, upright, upholstered, stacking, wipeable		3
2		2	CHA318	CHAIR, upright, with arms, upholstered, stacking, wipeable		3
1		1	COM033	COMPUTER KEYBOARD		3
1		1	COM049	COMPUTER MONITOR, 17"; TFT, digital flat panel display, high-resolution screens, desk top		3
1		1	COU010	COUCH, examination/treatment, (3 section), variable height, retractable wheels, with paper roll holder		3
1		1	DES1032	DESK, Corner unit		3
1		1	DRA056	DRAWER UNIT, 2 drawer, lockable, on castors, 600H 410W 600D		3

ADB	Schedule of Components by Room	C0237-HFS
------------	---------------------------------------	------------------

Project:	2532-RR	HFS Repeatable Rooms, ADB
Department:	EXEM	Exemplar Repeatable Rooms
Room:	C0237-HFS	Consulting/examination room: double-sided couch access
Room Number:		Revision Date: 17/03/2020

Quantity			Code	Description	Alt. Code	Grp
New	Trans	Total				
2		2	HOL006	HOLDER, sack, with lid foot operated, medium, freestanding, 875H 430W 385D		3
1		1	STA1262	STADIOMETER		3

Appendix B

Product and Material Performance Specifications

Product and material performance specifications will be included on the following pages, where deemed appropriate and/or relevant by Health Facilities Scotland.

Archived April 2024

Appendix C

1:50 Room Layouts of Repeatable Rooms

Room Layouts will be included on the following pages, and will refer to the rooms noted earlier in this document. As this is a live document, additional drawings will be added as the number of Repeatable Rooms developed, grows.

Archived April 2024



oberlanders
 Health Facilities Scotland
 Repeatable Rooms
 Single Bed
 Inboard En-suite

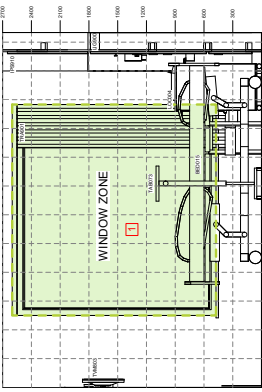
Preliminary
 Project No: 2502-A104-C-
 Client: NHS Forth Valley
 Site: 130/270
 Drawn: 1/25
 Date: 11/25

Bedroom

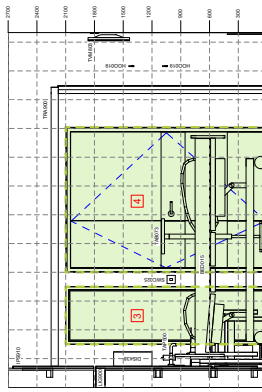
Part	Code	Approximate
1	1.1	135
2	1.2	135
3	1.3	135
4	1.4	135
5	1.5	135
6	1.6	135
7	1.7	135
8	1.8	135
9	1.9	135
10	1.10	135
11	1.11	135
12	1.12	135
13	1.13	135
14	1.14	135
15	1.15	135
16	1.16	135
17	1.17	135
18	1.18	135
19	1.19	135
20	1.20	135
21	1.21	135
22	1.22	135
23	1.23	135
24	1.24	135
25	1.25	135

NOTES TO BE INCLUDED ON JOB SHEET:
 - DOOR IRONMONGERY to be part of a Door Schedule.
 - NOTE: DOOR S TO BE SET TO prevent clash with TV. spec to be confirmed.

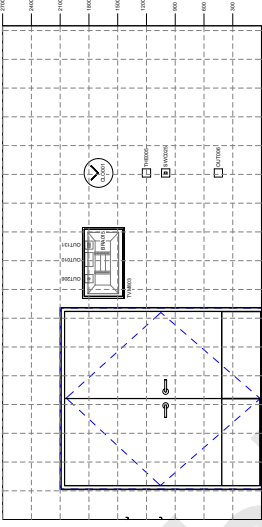
- HIGHLIGHTED AREAS**
- 1 WINDOW ZONE: Extent / Dimensions to be Project Specific.
 - 2 WARDROBE ZONE: Type / Size to be Project Specific.
 - 3 GLAZED SCREEN: Extent / Dimensions to be Project Specific.
 - 4 DOOR VISION PANEL / MISTMATIC: May be dependent on Glazed Screen as noted 3.
- ROOM AREA:** 10m² (including headbed IPS zone)



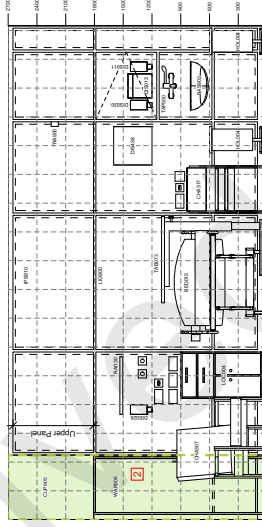
04 Single Bed - 2
1:25



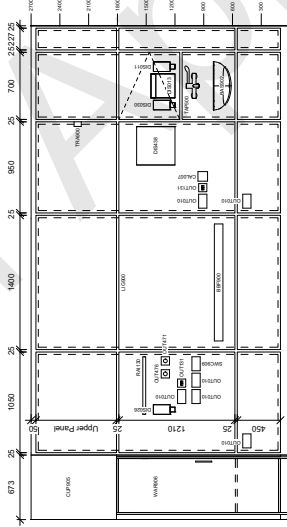
04 Single Bed - 4
1:25



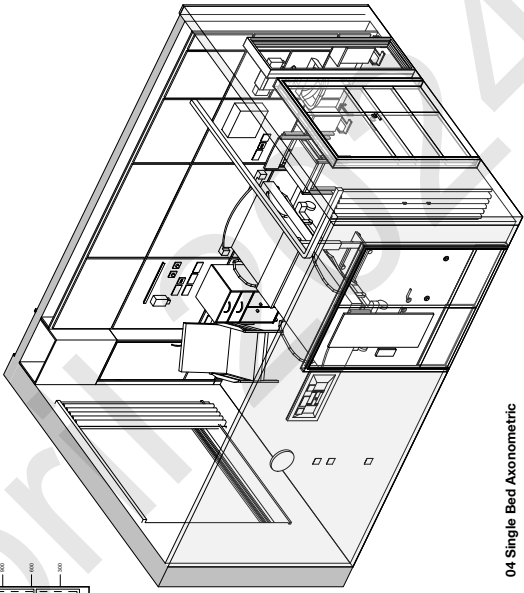
04 Single Bed - 1
1:25



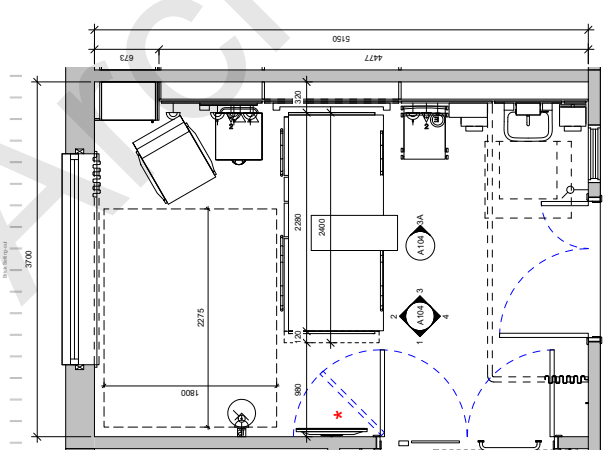
04 Single Bed - 3
1:25



04 Single Bed - 3A (Bedhead IPS)
1:25



04 Single Bed Axonometric



04 Single Bed - Plan
1:25

QTY	ACR/Code	Description	OM/LE
1	BED002	BASEIN, INBOARD EN-SUITE, WITH BATH, ON CORNER, ON CHAIRSIDE/HEAD	1
1	BED003	WALL PROTECTON, BED FRAME/BATH, Vertical	1
1	BED015	BED window height, two-way film insulation backsheet and frame, built-in bed 1010W, with mattress (either electrically operated, or castors, 800-1050 2500x2030)	3
1	BED016	BRACKET, for patient monitor, height adjustable, wall mounted	2
1	CHA001	CHAIR, PUPPET SEATING, with castors and call board and integrated call board lamp	3
2	CHA002	CHAIR, upholstered, adjustable, height adjustable, castors	3
1	CHA003	CHAIR, upholstered, height adjustable, castors, adjustable	2
1	CHA004	CHAIR, upholstered, height adjustable, castors, adjustable	2
1	CHA005	CHAIR, upholstered, height adjustable, castors, adjustable	2
1	CHA006	CHAIR, upholstered, height adjustable, castors, adjustable	2
1	CHA007	CHAIR, upholstered, height adjustable, castors, adjustable	2
1	CHA008	CHAIR, upholstered, height adjustable, castors, adjustable	2
1	CHA009	CHAIR, upholstered, height adjustable, castors, adjustable	2
1	CHA010	CHAIR, upholstered, height adjustable, castors, adjustable	2
1	CHA011	CHAIR, upholstered, height adjustable, castors, adjustable	2
1	CHA012	CHAIR, upholstered, height adjustable, castors, adjustable	2
1	CHA013	CHAIR, upholstered, height adjustable, castors, adjustable	2
1	CHA014	CHAIR, upholstered, height adjustable, castors, adjustable	2
1	CHA015	CHAIR, upholstered, height adjustable, castors, adjustable	2
1	CHA016	CHAIR, upholstered, height adjustable, castors, adjustable	2
1	CHA017	CHAIR, upholstered, height adjustable, castors, adjustable	2
1	CHA018	CHAIR, upholstered, height adjustable, castors, adjustable	2
1	CHA019	CHAIR, upholstered, height adjustable, castors, adjustable	2
1	CHA020	CHAIR, upholstered, height adjustable, castors, adjustable	2
1	CHA021	CHAIR, upholstered, height adjustable, castors, adjustable	2
1	CHA022	CHAIR, upholstered, height adjustable, castors, adjustable	2
1	CHA023	CHAIR, upholstered, height adjustable, castors, adjustable	2
1	CHA024	CHAIR, upholstered, height adjustable, castors, adjustable	2
1	CHA025	CHAIR, upholstered, height adjustable, castors, adjustable	2
1	CHA026	CHAIR, upholstered, height adjustable, castors, adjustable	2
1	CHA027	CHAIR, upholstered, height adjustable, castors, adjustable	2
1	CHA028	CHAIR, upholstered, height adjustable, castors, adjustable	2
1	CHA029	CHAIR, upholstered, height adjustable, castors, adjustable	2
1	CHA030	CHAIR, upholstered, height adjustable, castors, adjustable	2
1	CHA031	CHAIR, upholstered, height adjustable, castors, adjustable	2
1	CHA032	CHAIR, upholstered, height adjustable, castors, adjustable	2
1	CHA033	CHAIR, upholstered, height adjustable, castors, adjustable	2
1	CHA034	CHAIR, upholstered, height adjustable, castors, adjustable	2
1	CHA035	CHAIR, upholstered, height adjustable, castors, adjustable	2
1	CHA036	CHAIR, upholstered, height adjustable, castors, adjustable	2
1	CHA037	CHAIR, upholstered, height adjustable, castors, adjustable	2
1	CHA038	CHAIR, upholstered, height adjustable, castors, adjustable	2
1	CHA039	CHAIR, upholstered, height adjustable, castors, adjustable	2
1	CHA040	CHAIR, upholstered, height adjustable, castors, adjustable	2
1	CHA041	CHAIR, upholstered, height adjustable, castors, adjustable	2
1	CHA042	CHAIR, upholstered, height adjustable, castors, adjustable	2
1	CHA043	CHAIR, upholstered, height adjustable, castors, adjustable	2
1	CHA044	CHAIR, upholstered, height adjustable, castors, adjustable	2
1	CHA045	CHAIR, upholstered, height adjustable, castors, adjustable	2
1	CHA046	CHAIR, upholstered, height adjustable, castors, adjustable	2
1	CHA047	CHAIR, upholstered, height adjustable, castors, adjustable	2
1	CHA048	CHAIR, upholstered, height adjustable, castors, adjustable	2
1	CHA049	CHAIR, upholstered, height adjustable, castors, adjustable	2
1	CHA050	CHAIR, upholstered, height adjustable, castors, adjustable	2
1	CHA051	CHAIR, upholstered, height adjustable, castors, adjustable	2
1	CHA052	CHAIR, upholstered, height adjustable, castors, adjustable	2
1	CHA053	CHAIR, upholstered, height adjustable, castors, adjustable	2
1	CHA054	CHAIR, upholstered, height adjustable, castors, adjustable	2
1	CHA055	CHAIR, upholstered, height adjustable, castors, adjustable	2
1	CHA056	CHAIR, upholstered, height adjustable, castors, adjustable	2
1	CHA057	CHAIR, upholstered, height adjustable, castors, adjustable	2
1	CHA058	CHAIR, upholstered, height adjustable, castors, adjustable	2
1	CHA059	CHAIR, upholstered, height adjustable, castors, adjustable	2
1	CHA060	CHAIR, upholstered, height adjustable, castors, adjustable	2
1	CHA061	CHAIR, upholstered, height adjustable, castors, adjustable	2
1	CHA062	CHAIR, upholstered, height adjustable, castors, adjustable	2
1	CHA063	CHAIR, upholstered, height adjustable, castors, adjustable	2
1	CHA064	CHAIR, upholstered, height adjustable, castors, adjustable	2
1	CHA065	CHAIR, upholstered, height adjustable, castors, adjustable	2
1	CHA066	CHAIR, upholstered, height adjustable, castors, adjustable	2
1	CHA067	CHAIR, upholstered, height adjustable, castors, adjustable	2
1	CHA068	CHAIR, upholstered, height adjustable, castors, adjustable	2
1	CHA069	CHAIR, upholstered, height adjustable, castors, adjustable	2
1	CHA070	CHAIR, upholstered, height adjustable, castors, adjustable	2
1	CHA071	CHAIR, upholstered, height adjustable, castors, adjustable	2
1	CHA072	CHAIR, upholstered, height adjustable, castors, adjustable	2
1	CHA073	CHAIR, upholstered, height adjustable, castors, adjustable	2
1	CHA074	CHAIR, upholstered, height adjustable, castors, adjustable	2
1	CHA075	CHAIR, upholstered, height adjustable, castors, adjustable	2
1	CHA076	CHAIR, upholstered, height adjustable, castors, adjustable	2
1	CHA077	CHAIR, upholstered, height adjustable, castors, adjustable	2
1	CHA078	CHAIR, upholstered, height adjustable, castors, adjustable	2
1	CHA079	CHAIR, upholstered, height adjustable, castors, adjustable	2
1	CHA080	CHAIR, upholstered, height adjustable, castors, adjustable	2
1	CHA081	CHAIR, upholstered, height adjustable, castors, adjustable	2
1	CHA082	CHAIR, upholstered, height adjustable, castors, adjustable	2
1	CHA083	CHAIR, upholstered, height adjustable, castors, adjustable	2
1	CHA084	CHAIR, upholstered, height adjustable, castors, adjustable	2
1	CHA085	CHAIR, upholstered, height adjustable, castors, adjustable	2
1	CHA086	CHAIR, upholstered, height adjustable, castors, adjustable	2
1	CHA087	CHAIR, upholstered, height adjustable, castors, adjustable	2
1	CHA088	CHAIR, upholstered, height adjustable, castors, adjustable	2
1	CHA089	CHAIR, upholstered, height adjustable, castors, adjustable	2
1	CHA090	CHAIR, upholstered, height adjustable, castors, adjustable	2
1	CHA091	CHAIR, upholstered, height adjustable, castors, adjustable	2
1	CHA092	CHAIR, upholstered, height adjustable, castors, adjustable	2
1	CHA093	CHAIR, upholstered, height adjustable, castors, adjustable	2
1	CHA094	CHAIR, upholstered, height adjustable, castors, adjustable	2
1	CHA095	CHAIR, upholstered, height adjustable, castors, adjustable	2
1	CHA096	CHAIR, upholstered, height adjustable, castors, adjustable	2
1	CHA097	CHAIR, upholstered, height adjustable, castors, adjustable	2
1	CHA098	CHAIR, upholstered, height adjustable, castors, adjustable	2
1	CHA099	CHAIR, upholstered, height adjustable, castors, adjustable	2
1	CHA100	CHAIR, upholstered, height adjustable, castors, adjustable	2



oberlanders
Health Facilities Scotland
Repeatable Rooms
The Consulting Room

Preliminary
Project No: 2502-A103-D
Drawing No: 1001/220
Drawing Date: 19/01/2022
Drawing Scale: 1:25
www.oberlanders.co.uk

Block identifier

A1 Block - A3 Block	A1 Block - A3 Block
1.1	1.5
1.2	1.6
1.3	1.7
1.4	1.8
1.5	1.9
1.6	2.0
1.7	2.1
1.8	2.2
1.9	2.3
2.0	2.4

Rev

1	2
3	4
5	6
7	8
9	10
11	12
13	14
15	16
17	18
19	20
21	22
23	24
25	26
27	28
29	30
31	32
33	34
35	36
37	38
39	40
41	42
43	44
45	46
47	48
49	50
51	52
53	54
55	56
57	58
59	60
61	62
63	64
65	66
67	68
69	70
71	72
73	74
75	76
77	78
79	80
81	82
83	84
85	86
87	88
89	90
91	92
93	94
95	96
97	98
99	100

Notes

- 3007020 - Review to incorporate future changes to A&B
- 3007020 - Draft Report Issue

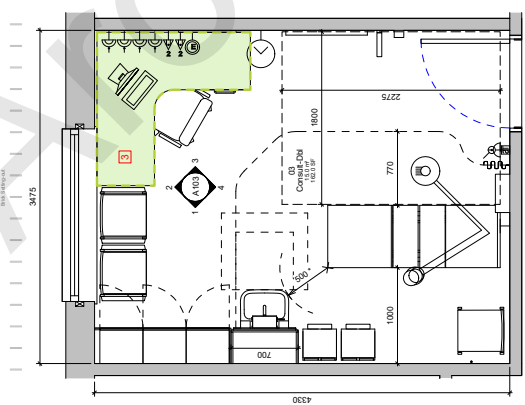
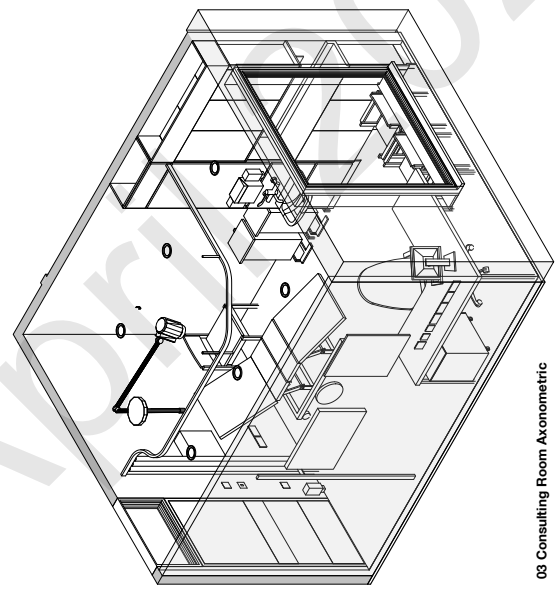
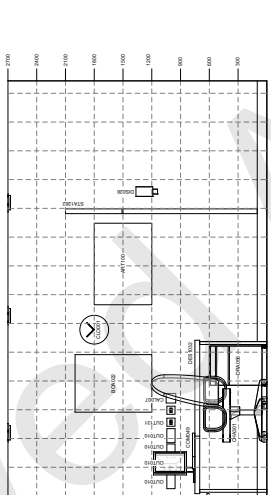
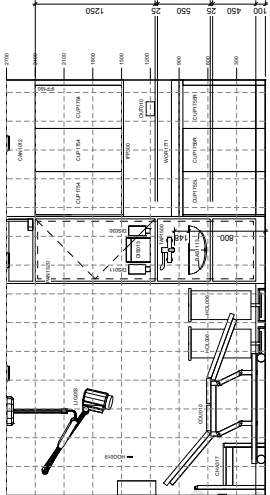
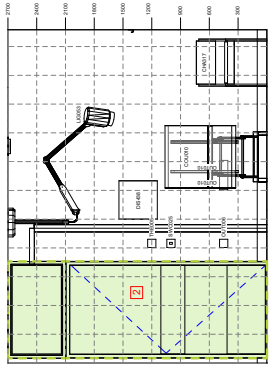
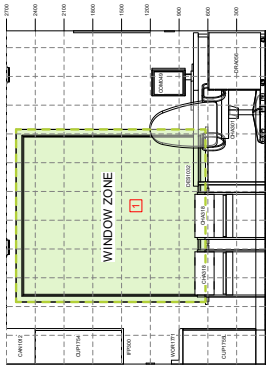
NOTES TO BE INCLUDED ON A&B SHEET:

- LG053 Luminaire Specification to be confirmed.
- Staff height for the table, location of the Patient chair in the Consulting Room. This is to make Staff aware of the hazards of working around the table and the work station.

HIGHLIGHTED AREAS

- WINDOW ZONE:** Extent / Dimensions to be Project Specific.
- DOOR VISION PANEL / VISION PANEL:** Extent / Dimensions to be Project Specific.
- DESK:** Quantity, size & fill risk with correct Specs. (if required) to be Project Specific.

ROOM AREA: 10.0m²



QTY	DESCRIPTION	GROUP
1	APPT100 APPT Network	3
1	APPT103 APPT Network	3
1	APPT104 APPT Network	3
1	APPT105 APPT Network	3
1	APPT106 APPT Network	3
1	APPT107 APPT Network	3
1	APPT108 APPT Network	3
1	APPT109 APPT Network	3
1	APPT110 APPT Network	3
1	APPT111 APPT Network	3
1	APPT112 APPT Network	3
1	APPT113 APPT Network	3
1	APPT114 APPT Network	3
1	APPT115 APPT Network	3
1	APPT116 APPT Network	3
1	APPT117 APPT Network	3
1	APPT118 APPT Network	3
1	APPT119 APPT Network	3
1	APPT120 APPT Network	3
1	APPT121 APPT Network	3
1	APPT122 APPT Network	3
1	APPT123 APPT Network	3
1	APPT124 APPT Network	3
1	APPT125 APPT Network	3
1	APPT126 APPT Network	3
1	APPT127 APPT Network	3
1	APPT128 APPT Network	3
1	APPT129 APPT Network	3
1	APPT130 APPT Network	3
1	APPT131 APPT Network	3
1	APPT132 APPT Network	3
1	APPT133 APPT Network	3
1	APPT134 APPT Network	3
1	APPT135 APPT Network	3
1	APPT136 APPT Network	3
1	APPT137 APPT Network	3
1	APPT138 APPT Network	3
1	APPT139 APPT Network	3
1	APPT140 APPT Network	3
1	APPT141 APPT Network	3
1	APPT142 APPT Network	3
1	APPT143 APPT Network	3
1	APPT144 APPT Network	3
1	APPT145 APPT Network	3
1	APPT146 APPT Network	3
1	APPT147 APPT Network	3
1	APPT148 APPT Network	3
1	APPT149 APPT Network	3
1	APPT150 APPT Network	3
1	APPT151 APPT Network	3
1	APPT152 APPT Network	3
1	APPT153 APPT Network	3
1	APPT154 APPT Network	3
1	APPT155 APPT Network	3
1	APPT156 APPT Network	3
1	APPT157 APPT Network	3
1	APPT158 APPT Network	3
1	APPT159 APPT Network	3
1	APPT160 APPT Network	3
1	APPT161 APPT Network	3
1	APPT162 APPT Network	3
1	APPT163 APPT Network	3
1	APPT164 APPT Network	3
1	APPT165 APPT Network	3
1	APPT166 APPT Network	3
1	APPT167 APPT Network	3
1	APPT168 APPT Network	3
1	APPT169 APPT Network	3
1	APPT170 APPT Network	3
1	APPT171 APPT Network	3
1	APPT172 APPT Network	3
1	APPT173 APPT Network	3
1	APPT174 APPT Network	3
1	APPT175 APPT Network	3
1	APPT176 APPT Network	3
1	APPT177 APPT Network	3
1	APPT178 APPT Network	3
1	APPT179 APPT Network	3
1	APPT180 APPT Network	3
1	APPT181 APPT Network	3
1	APPT182 APPT Network	3
1	APPT183 APPT Network	3
1	APPT184 APPT Network	3
1	APPT185 APPT Network	3
1	APPT186 APPT Network	3
1	APPT187 APPT Network	3
1	APPT188 APPT Network	3
1	APPT189 APPT Network	3
1	APPT190 APPT Network	3
1	APPT191 APPT Network	3
1	APPT192 APPT Network	3
1	APPT193 APPT Network	3
1	APPT194 APPT Network	3
1	APPT195 APPT Network	3
1	APPT196 APPT Network	3
1	APPT197 APPT Network	3
1	APPT198 APPT Network	3
1	APPT199 APPT Network	3
1	APPT200 APPT Network	3

Health Facilities Scotland
Glasgow Office
3rd Floor
Meridian Court
5 Cadogan Street
Glasgow
G2 6QE
T: 0141 207 1600
E: nss.hfsenquiries@nhs.net

Health Facilities Scotland
Edinburgh Office
Gyle Square
1 South Gyle Crescent
Edinburgh
EH12 9EB
T: 0131 275 6000
E: nss.hfsenquiries@nhs.net

Archived April 2024