

**NHS Scotland Assure**

Quality in the healthcare environment



# NHS Scotland Assure Conference:

Excellence in the healthcare environment



Delegate  
guide and  
programme.


**3 and 4 November**  
**Crieff Hydro Hotel,**  
**Perthshire**

[@NHSNSS](#)

[#NHSScotAssureConf](#)

# Contents

<b>Conference overview</b>	<b>4</b>
Welcome	4
Conference Values	5
Conference Principles	5
Event information	5
Conference Dinner	7
Acknowledgements	8
Feedback	8
<b>NHSScotland Excellence Awards</b>	<b>9</b>
Outstanding Achievement Award	9
Sustainability Excellence Award	9
Engineering Excellence Award	11
Energy Excellence Award	11
Design Excellence Award	12
Best Practice in Property and Asset Management Award	16
Facilities Innovation Award	18
Collaboration: Working in Partnership Award	19
Educational Achievements	22



<b>Speaker Programme</b> _____	<b>23</b>
<b>Plenary Speakers</b> _____	<b>26</b>
<b>Parallel Session Speakers</b> _____	<b>31</b>
<b>Exhibition</b> _____	<b>51</b>
<b>Layout</b> _____	<b>51</b>
<b>Exhibition Prize Draw</b> _____	<b>52</b>
<b>Alphabetic Index of Stands</b> _____	<b>53</b>
<b>Company Information by stand number</b> _____	<b>54</b>
<b>NHS Scotland Assure Services</b> _____	<b>71</b>
<b>Overview of NHS Scotland Assure and all services</b> _____	<b>71</b>
<b>Climate Change, Sustainability and Environmental Compliance team</b> _____	<b>74</b>
<b>Digital Estate and Asset Management team</b> _____	<b>76</b>
<b>Frameworks Scotland</b> _____	<b>79</b>
<b>Equipping Services</b> _____	<b>91</b>
<b>Aroma</b> _____	<b>94</b>

# Conference overview

## Welcome

Dear Colleagues

On behalf of NHS National Services Scotland (NSS) and NHS Scotland Assure, I would like to offer all speakers, delegates and exhibitors a very warm welcome to the first NHS Scotland Assure conference.

Thank you for taking the time to attend and support this conference and I hope that you enjoy the full programme we have created for the first NHS Scotland Assure Conference.

Can I ask that you make every effort to attend all the speaker sessions you have booked and visit each stand in the exhibition. Speakers and exhibitors have travelled from across Europe to support the event.

We have a several social and networking opportunities planned over the two days, which we hope you will enjoy. Also please engage with colleagues and join the conversation on social media by following us on [Twitter](#) and [LinkedIn](#).

My final ask is that once you have returned home and reflected on the conference, please then take the time to provide your feedback on the event. We will review all comments prior to planning future events and welcome all feedback.

I hope that the NHS Scotland Assure Conference will be an important event in your calendar for years to come and build upon the success of its predecessor the Scottish Health and Social Care Facilities Conference.

This guide provides some important information about the conference. Should you have any further questions during the Conference, please do not hesitate to contact a member of the conference team who will be happy to help.

We hope you have an enjoyable and memorable conference.

**Yours faithfully**



**Julie Critchley**

**Director of NHS Scotland Assure**



## Conference Values

Over the years, our successful delivery of the conference has been built on the NHS National Services Scotland core values. We work together with:

- respect and care,
- openness and integrity,
- to focus on our customers,
- demonstrate commitment to each other; and
- excel and improve.

## Conference Principles

- be inclusive and optimise mechanisms for meaningful participation;
- be transparent in the way that the conference is planned and implemented;
- develop a robust, comprehensive programme to present continuous improvement, innovation and best practice in the delivery of estates, facilities and Infection Prevention and Control (IPC) services across NHSScotland's healthcare built environment, our NHS buildings and estates.

**We ask all our speakers, delegates and exhibitors to share these values.**

## Event information

**Sustainability** – with the climate in crisis we encourage everyone to be conscious of the environment and help us to make this a sustainable event. Vehicle emissions are a primary source of greenhouse gases, so please consider using public transport and / or car sharing wherever possible. Small steps can have a big impact, and for the conference this year, we have:

- Minimised our paper trail, including this Delegate Guide which will only be shared electronically. Please avoid printing copies of the guide.
- Used email and social media channels only to promote the event.
- Banned the use of disposable plastic cups and dinnerware during the event.
- Reduced the number of food options available to minimise food waste and using locally sourced food wherever possible.
- Used communications to highlight and encourage sustainable practices.

We will also calculate the carbon footprint of our event and request that delegates help us to offset this.

We would ask everyone attending the event including delegates, speakers and exhibitors to support these efforts. Feedback on how we can make future events more environmentally sustainable is very welcome. To find out more visit Stand 21 NHSScotland Sustainability Action in the exhibition area.





**Name badges** – for security reasons, please ensure that you wear this at all times except during the Conference dinner. If you misplace your badge, please contact the conference registration desk.

**Corrections** – please note that there may have been unavoidable changes to the event that have been made since the publication of this guide.

**Photographer** – please note that a photographer will be in attendance at the event. The photos will be used to promote the principles and practices of NHS Scotland Assure and the event. They will be published on the NHS NSS website and may be passed to other NHS health boards. If you do not want photos that you are in to be used, please provide your details to a member of the conference team.

**Quiet Room** - a quiet room is available if required for business use, contact the Conference Registration for details.

**Refreshments** – refreshments will be available in the exhibition space.

**Lunch** – lunch will be available in both the Meikle Restaurant and the Terrace.

**Dietary** – if you have not already advised us of any special or dietary requirements, please let us know at the conference registration desk at your earliest convenience. We will make every effort to honour these requests, however, we cannot guarantee to cater for special dietary requirements where prior notice was not given.

**Exhibition prize draw** - collect stamps on the back of your badge and enter the prize draw, see page 52 for more details.

**Drinks with exhibitors** – a drinks reception will be held in the exhibition space commencing at 5.10pm on Thursday. Please make every effort to attend and meet with our exhibitors.

## Conference Dinner

A pre-dinner drinks reception will take place from 7pm in the Ferntower Suite which will be followed by the conference dinner, charity raffle and networking in Melville Hall from 7.30pm. The dress code for the dinner is professional work attire or black tie.

### Charity Partner



The Conference raffle is supporting the Thistle Foundation

Thistle is a Scottish charity supporting people with long-term health conditions and disabilities to live life on their terms. They support people living with disabilities, long-term conditions or facing challenging life situations to live well, whatever that means to them.

Thistle support people to take control of their life, focusing on the person, not their situation. They listen to what a person tells them they need and tailor support around that, working beside people until they are able to manage life without Thistle.



### Raffle

To raise funds for the charity, we have asked all companies attending the event to consider donating a prize for the raffle to be held during the conference dinner. Some fantastic prizes have already been donated but it is not too late if you wish to donate, just contact [nss.hfsconference@nhs.scot](mailto:nss.hfsconference@nhs.scot).

Anyone wanting to enter the raffle, just put at least £10 in one of the envelopes provided and add your details to the front of the envelope before passing to one of the conference team. If you are not attending the dinner but would still like to enter the raffle, you can do so at the conference registration desk during the event.

Full details of the prizes on offer will be provided during the dinner. Please ensure that all the filled envelopes and Gift Aid forms are collected by the conference team before the start of the raffle draw. **Good luck!**

All prizes should be collected from the conference registration area during the Friday morning coffee break, between 11am and 11.40am. Prizes not collected during this time will be transported back to NHS Scotland Assure office at Canderside, 2 Swinhill Avenue, Larkhall ML9 2QX, and will be available for collection by arrangement from Tuesday 8 November.

NHS Scotland Assure would like to thank all those companies who contributed to the prizes for the raffle, without your support the raffle would not be possible.

## Acknowledgements

No conference like this just happens; they all rely on a great deal of coordinated effort on the part of many participants. NHS Scotland Assure would like to express appreciation to everyone who has contributed in various ways.

Without speakers willing to impart knowledge, there would be no conference and the organisers appreciate their particular commitment in giving up time to prepare and deliver their presentations. As always, support from exhibitors cannot be over-estimated and we hope that delegates and exhibitors alike will have benefited mutually from their attendance. The continuing support of the delegates enables these conferences to be successful every year. Our conference team ensures that the entire event runs smoothly from its organisation to its delivery. The Crieff Hydro team provides the support needed to help make this event a success.



## Feedback

Thank you for providing feedback to previous NHS NSS events, it is very important to us to review your comments and suggestions when planning events. The Conference Management Team review all feedback and comments and take this into account when planning the next conference.

Please ensure that you take the opportunity to provide your detailed feedback so we can aspire to improve the event in future years. The conference team is happy to discuss your feedback and we will circulate a feedback questionnaire after the event.





# NHSScotland Excellence Awards

The annual awards are intended to encourage and acknowledge professional excellence across the wide range of topics covered by facilities and IPC staff in NHSScotland, which have led to improved, lasting and replicable outcomes in healthcare provision for patients, local communities and staff. All NHSScotland organisations, teams or individuals that can provide evidence of a suitable project which meets the award criteria were eligible to apply. The awards categories for 2022 are as follows:

- **Sustainability Excellence Award**
- **Engineering Excellence Award**
- **Energy Excellence Award**
- **Design Excellence Award**
- **Best Practice in Property and Asset Management Award**
- **Facilities Innovation Award**
- **Collaboration: Working in Partnership Award**

## Outstanding Achievement Award

In addition to these categories, the best overall submission will be selected by the judging panel from all the entries into above categories. This award will be announced during the awards ceremony and presented with the NHSScotland Outstanding Achievement Award.

## Sustainability Excellence Award

The Sustainability Excellence Award recognises and encourages excellence in sustainability projects, or sustainability leadership, in relation to estates and facilities.

The shortlist for the 2022 award are:

### **NHS Ayrshire and Arran: Climate Change and Sustainability Strategy 2021-2032**

This project involves the production of an ambitious strategy to promote climate action, tackle environmental degradation and reverse biodiversity loss to improve health outcomes. It goes beyond the national sustainability assessment tool to address theatres and anaesthetics and includes primary care, pharmaceuticals, rise of AMR, high carbon areas such as emergency intensive care and the impact of plastics, medical plastics including phasing out certain groups of toxic chemicals, and sustainable food.

### **NHS Forth Valley: NHS Forth Valley Facilities & Infrastructure Team**

Working with local authorities, the team has significantly improved EV charging infrastructure over a two-year period increasing the number of both publicly accessible and fleet only charging points across the Board. The project utilised £600k from the Boards own capital funding and the Switched-on Towns and Cities initiative. There are 53 charger units with more planned, and the number of EV fleet vehicles has been increased from 7 to 22. This has increased the Boards capacity to charge 94 vehicles catering for both the public and the organisation.



## **NHS Greater Glasgow and Clyde: Royal Alexandra Hospital the Pond and Beyond**

This project involves the restoration of a neglected and overgrown pond and woodland area to provide a quiet and reflective spot where staff, patients and members of the local community can spend time in nature, and where wildlife can thrive. Improvements include a new pathway circuit around the pond with a wooden boardwalk and interpretation signage; new benches and seating; natural play equipment; and a 'living archway'. All these elements have demonstrably improved nature, biodiversity and staff and patient wellbeing.

## **NHS Lanarkshire: Sustainability in our Theatres**

This project replicates and builds on the Green Theatre initiative through the formal establishment of a Theatre Sustainability Group. The Group is comprised of a range of clinical staff from three acute hospitals and colleagues from community settings and has engaged clinical teams across the organisation. Actions have included the almost complete elimination of Desflurane, the elimination of single use-cutlery and cups, and the replacement of plastic cups with glassware.

## **NHS Lothian: Innovation and Engagement in Nitrous Oxide Mitigation**

This project demonstrates clinical leadership and the innovative use of new technology to capture nitrous oxide used during childbirth and convert it to harmless nitrogen and oxygen. Agata Zajac, whose son Nathan was born at St John' Hospital Livingston was one of the first mums in Scotland to give birth using the new machine. The project has reduced the environmental impact of nitrous oxide, ensured the safety of mother and baby and raised awareness of the environmental harms of health care.

## **NHS Lothian: Sustainability Communications and Reporting**

This project demonstrates leadership through the implementation of an engagement campaign and sustainability communications strategy that has embedded sustainability into staff consciousness across the organisation, including the launch of a Greener NHS Lothian Facebook page, sustainability email account, a series of sustainability webinars, increased web presence and news stories. It has encouraged contribution and participation in reducing waste, tackling the Board's carbon footprint and improving sustainability overall.

## **NHS Lothian: Sustainable Development Framework and Action Plan**

This project demonstrates leadership on the climate emergency and sustainability through the engagement of staff during the pandemic to produce a sustainability framework with supporting actions. The sustainability team involved staff through a series of events and workshops, and the framework was published in December 2020. It sets out a whole system approach, a strong vision and the organisational transformation required for the future, including a commitment to working with partners and communities.

## **NHS Orkney: Clinical Waste Treatment Facility**

The project involves the introduction of an innovative on-site waste treatment system. As well as reducing the carbon impact of transport, the waste is reduced to at least a quarter of the original volume and collected by the local authority through the domestic waste stream, which is then transported to Shetland. Using an energy from waste plant the waste is converted into energy to supply the district heating and hot water project rather than being sent for incineration.

## Engineering Excellence Award

The Engineering Award recognises and encourages excellence in innovative engineering solutions which have major benefits for the internal or external environment of an NHSScotland organisation, related patients/client groups, visitors, staff and the wider local or national economy.

The shortlist for the 2022 award are:

### **NHS Greater Glasgow & Clyde: Minor Works Team**

NHSGG&C went from a position of not being able to provide any dental care at Glasgow Dental Hospital in April/May 2021 to a position in mid/late August 2021 where they could continue their graduate program and provide the public with dental services. The project was delivered within a three month window where there was a natural summer break for students. Students from the previous year were then able to complete their final studies and graduate and a further student intake could be taken on board for FY 22/23.

### **NHS Lanarkshire: Nitrous Oxide Reduction / Decommissioning Project**

NHS Lanarkshire continued its reduction of nitrous oxide which they started to do in 2018. At that time, the gas represented emissions of over 1000 tonnes of Carbon dioxide equivalent (CO<sub>2</sub>e). The Board have reduced this figure to approximately 266 tonnes CO<sub>2</sub>e in 2021 by decommissioning of the piped nitrous oxide system and reduction in the clinical use of this gas.

### **NHS Lothian: St John's Hospital - Energy Centre Refurbishment**

NHS Lothian completed a project in 2019 to reduced greenhouse gas emission, replace steam and aging plant on the St John's hospital acute site. The Health Board used the Carbon Energy Fund (CEF) and a third party contractor to deliver the solution, which has resulted in savings to the Board of approximately one million pounds per annum.

## Energy Excellence Award

The Energy Excellence Award recognises and encourages excellence in innovative energy efficiency/ greenhouse gas (GHG) mitigation projects which contribute to NHSScotland net zero aspirations and have major benefits for the internal or external environment of an NHSScotland organisation, related patients/client groups, visitors, staff and the wider local or national economy.

The shortlist for the 2022 award are:

### **NHS Lothian: St John's Hospital – Energy Performance Contract**

This project involved the replacement of an energy centre at St John's Hospital in West Lothian. Aged and failing steam boilers were replaced with efficient versions and inclusion of a 1.5MWe gas CHP. While actual energy consumption figures have increased due to use of CHP, primary energy figures including distribution and transmission show a reduction of over 12M kWh's and financial savings in excess of £1M per annum.

### **NHS Orkney: The Balfour**

This project involves the use of heat pumps, complemented by solar panels, to meet the requirement of providing comfort heat and hot water to the new Balfour Hospital. Resilience of supply was a critical consideration for NHS Orkney and the system was designed and installed with multiple layers of resilience responding specifically to the remote location of the hospital and the 24 hours a day, 365 days a year operational requirement.



## Design Excellence Award

The Design Award will recognise the NHSScotland organisation, project team, or individual who has made a significant contribution to creating an excellent design that is patient/client group focussed, functional, innovative and sustainable.

The shortlist for the 2022 award are:

### **NHS Golden Jubilee: Eye Centre (Wayfinding Strategy)**

This project consists of the wayfinding strategy which has been implemented in the Eye Centre at Golden Jubilee. The wayfinding strategy was designed to ensure an inclusive and empowering environment for all the service users, utilising a range of solutions along all of the patient pathways, including visual-impairment friendly flooring with wayfinding lines; an inclusive signage strategy utilising sensory cues as well as visual, tactile and auditory elements; and bespoke digital solutions to aid wayfinding and self-check in.

### **NHS Greater Glasgow and Clyde: Elgin and Appin Wards, Stobhill**

A partnership between NHS GGC and Hub West Scotland brought about the delivery of Elgin and Appin Wards; two purpose-built acute mental health wards at Stobhill Hospital. The existing Stobhill estate was fragmented and lacked cohesion. This project provided the opportunity to establish a future master planned framework. The unique facility seeks to foster social inclusion by delivering rehabilitation, discharge and recovery services which promote independence and self-reliance. Two single-story wards are planned around safe, calming courtyards framing views of an existing Victorian water tower.

Delivered through the height of the coronavirus (COVID-19) pandemic, the project has been critically acclaimed, winning – amongst other accolades - Healthcare Development of the Year 2021 in the Scottish Property Awards.

### **NHS Greater Glasgow and Clyde: Greenock Health and Care Centre**

The new Greenock Health and Care Centre provides clinical and administration space for Inverclyde Health & Social Care Partnership and NHS Greater Glasgow and Clyde. The ground and first floors contain a series of bookable rooms for a range of clinical/community services, including children's and community dental services. Three large GP practices are on the second floor. The third floor accommodates a large staff agile working office space with access to an external terrace area. As well as modernising the existing facilities, the project looks to make services more integrated, accessible and efficient for patients and service users, while contributing to the wider goals of community regeneration and addressing health inequalities.

Built on a steeply sloping, brownfield site within the Broomhill community. Accommodation is arranged around a sheltered, central courtyard garden and internal atrium which creates a clear and welcoming entrance. The 15-meter level change across the site means the ground floor has a smaller footprint. The central atrium, housing reception and circulation space, and adjacent courtyard garden climb with the topography of the site. Robust natural materials were selected – a warm brick, timber louvres and palette of blues that work well with the light that floods into the building from the roof-lights and courtyard glazing.

## **NHS Greater Glasgow and Clyde: Royal Alexandra Hospital (HALO Gardens)**

The idea for the HALO project originated with ICU staff, who wanted to honour organ donors and provide a space for reflection for those affected by the COVID-19 pandemic. The key objectives of the project were to provide opportunities for staff and service users to spend time outside to enjoy the healing benefits of nature, as well as enhancing biodiversity. The HALO gardens use plants, green space and the simple form of the circle to define spaces for human activity. Mixed planting and benches, set out at a minimum of 2 metres in a circular form, create convivial areas for contemplation, relaxation and communication; they transform previously unused spaces into destinations, and enhance the public realm.

It is envisioned as a pilot project which can be rolled out nationally in response to COVID-19 and a green recovery.

## **NHS Highland: Badenoch and Strathspey Community Hospital**

The new Badenoch and Strathspey Community Hospital in Aviemore saw the consolidation of services from five separate locations into one new hub, including a GP practice, outpatient and imaging services, minor injuries and out of hours service, the integrated community team base, Scottish Ambulance Service base and 24 in-patient beds. The new hospital, part of a wider redesign of services, has delivered a more effective and efficient clinical service through improved technical and space standards, and an enhanced patient journey. The project also aims to improve the retention and recruitment of staff by improving working conditions.

Two of the larger single-bed inpatient rooms incorporate drop-down beds to allow carers to stay with their loved ones. The ward benefits from two internal courtyards, providing daylight and sheltered outdoor space, and a larger in-patient garden accessed through the patient common room.

## **NHS Highland: Broadford Hospital**

The new Broadford Hospital is part of a wider redesign of health and social care services. Located between the Broadford Health Centre and the existing Mackinnon Memorial Hospital, the project requirements dictated that the facility must make the most of its setting with the potential for stunning views, whilst also coping with the harsh weather conditions experienced in this location.

The project accommodates multiple small departments as well as co-locating with Scottish Ambulance Service. Outpatient facilities are located to the south of the ground floor along the public approach route, while the north end houses the emergency department with supporting imaging department and the community maternity unit, and service areas. This split shaped the central location of the reception, which provides a hub for patient and visitor wayfinding, lit from above by the main stair leading to the first-floor ward. The first floor is dedicated to inpatient facilities, where longer-term patients benefit from increased privacy and stunning views over Broadford Bay. This layout also enables the staff to close off '9-5' areas in the out of hours period, enhancing energy efficiency and security. This is fundamental for a rural location in a building with a small staff cohort.



## **NHS Lothian: Beyond Walls Royal Hospital for Children**

Beyond Walls was a £5m enhancement programme for the new hospital opened in Edinburgh in 2020-21. NHS Lothian, together with Edinburgh Children's Hospital Charity and NHS Lothian Charity, worked to curate and produce the UK's largest healthcare art and therapeutic design commissioning to date.

Over 20 projects - from digital animation and film to interior design and artworks - involving 40+ artists, designers and makers, were commissioned to develop a range of bespoke creative solutions. Artists led creative workshops at hospital sites and city venues to engage staff, patients and the wider public on each commission and to ensure the hospital community was at the heart of the commissioning process. Indeed, they are reflected in the very fabric, with skin textures of three patients and staff members from the hospital services featured in 'The Spine Wall'.

The value of an enriched healthcare environment helping to reduce stress and anxiety and aid recovery is core to Beyond Walls. The emphasis is on integrated design to enhance the patient experience and the successful delivery of Beyond Walls is testament to the importance that NHS Lothian has placed on arts in healthcare, integrating this as part of the capital development programme from the start.

## **NHS Lothian: East Lothian Community Hospital**

This project involves the consolidation of three sites to one to provide an integrated health and social care service across EL care, reducing patients spending unnecessary time in hospitals and delivering more services closer to home, minimising avoidable travel to Edinburgh hospitals.

The new hospital comprises a two / three storey hospital building with an associated energy centre and estates block. In addition, there is extensive gardens and landscaping, car parking, access road improvements and amenity areas for community use. The hospital delivers increased primary care and outpatient services, step-down care, integrated mental health services, and increased inpatient accommodation. This supported wider reconfiguration plans across NHS Lothian through repatriation of services back to East Lothian.

## **NHS Lothian: Renal Dialysis Unit, Western General Hospital**

The new Renal Dialysis Unit in Edinburgh opened its door to patients from the north and west of the city in June 2021. The delivery of the dialysis service at the WGH was previously being undertaken in a very poor environment that was compromising clinical care. Various short-term repairs to the fabric of the building had been made throughout the years to enable continued use, however the portacabin remained very cramped, falling short of all modern standards, and simply not fit for purpose.

The project provides patients who need kidney dialysis access to the latest equipment in modern, bright, and spacious surroundings. Located at the Western General Hospital, the state-of-the-art facility is designed to meet projected rising demand for dialysis services, while being more comfortable and welcoming for patients. The separation of the staff and clinical areas provides a safe environment for both groups and separate engineering entrances to the building, as well as the entry for reverse Osmosis materials accessible from both sides of the building offer additional resilience and flexibility of use.

## NHS Tayside: Children's Theatre Suite, Ninewells

The Children's Theatre Suite is a day surgery unit within Ninewells Hospital. The project brings together all the different components into one geographical location to form a Children's Hospital by ensuring co-location with several existing services, namely the Ward 29 Children's In-Patient Ward and Children's Out-Patient Department.

The selected site was an old research laboratory used by the University of Dundee. The site is a long skinny rectangle with only one elevation having access to natural daylight/ ventilation. Given this limitation there was extensive consultation with the clinical service on which aspects of the new facility would benefit most from access to daylight. The final floor plan places all the support accommodation at the back of the floor plan and patient areas at the front of the plan with views out into the existing courtyard.

One of the main design principles for this project is the flow through the facility to minimise stress to patients and their carers. The team needed to ensure that a child/ parent going into theatre never saw a child coming out of theatre to prevent undue stress. The design of the new suite also had to appeal to children with an age range from zero to 16 years.



## Best Practice in Property and Asset Management Award

The Best Practice in Property and Asset Management Award recognises and encourages excellence which has made a significant contribution to property and asset management related disciplines within their Boards.

The shortlist for the 2022 award are:

### **NHS Ayrshire and Arran: Residential Project to Support Medical Students**

This project demonstrated an alternative approach to providing residential accommodation for medical students from Glasgow and Dundee Universities. By purchasing properties within a new development near Kilmarnock Town Centre, rather than the re-purposing of an existing Board office property, the accommodation was delivered in a shorter timescale and at a cost saving.

The project provides better accommodation for the students both in terms of the quality of the surroundings and is in a better location in terms of amenities and leisure options in comparison to the office accommodation. There are also advantages in property performance, as the new properties have a lower carbon footprint, with better insulation, solar panels etc also having much lower backlog maintenance and lifecycle requirements.

This project will also help the Boards Student Liaison team attract applicants to work within NHS Ayrshire and Arran.

### **NHS Grampian: Strategic Healthcare Planning - Local Planning Engagement**

This project demonstrates a collaborative approach with local authorities in relation to Local Development Plans, identifying the impact that new residential developments have on the provision of healthcare services within the Grampian area. Annual Primary Care Premises Planning supports the need for developer contributions for GP's, dentists and pharmacies ensuring health and wellbeing is engrained within community planning. The partnership has also enabled NHS Grampian Public Health to be more involved in the planning process; informing site master planning and integrating health and wellbeing throughout planning policies.

This approach is innovative; ensuring health and wellbeing is engrained within community planning; ensuring health services are alert to the emergence of new developments; health influencing design of recreational/open spaces and readiness to provide sustainable healthcare service to new residents.





## **NHS Greater Glasgow and Clyde: Renfrewshire Health & Social Care Partnership Primary Care Strategy - Pilot Study**

This project demonstrates a collaborative approach with Renfrewshire Health & Social Care Partnership (H&SCP), Renfrewshire Council and local GPs in the development of a Primary Care Property Strategy.

The objectives of the pilot were to identify; the current property portfolio in terms of condition, fitness for purpose, current utilisation, and services provided from these properties; the gap between the current property portfolio versus what is required in future to support future H&SCP and Board services; understanding of the future direction of travel for health and social care services, including the Primary Care Improvement Plan (PCIP); to support the objectives arising from the Board's Clinical Vision - Moving Forward Together (MFT) and Renfrewshire Integrated Joint Boards Strategic Plan and digital innovation.

This approach has proved to be successful and is currently being taken forward with the remaining five H&SCPs across the Board area to develop an overall NHS Greater Glasgow & Clyde Primary Care Property Strategy.



## **NHS Lothian: Biodiversity and Natural Capital Assessment of the NHS Lothian Estate**

The project demonstrates an innovative approach to asset management in relation to natural assets. NHS Lothian carried out a natural capital assessment of the estate and is the first Board in Scotland to publish a detailed account of its green assets.

The project has had positive outcomes for both policy and practice. The value of the assets has been recognised and for the first time greenspace targets have been included in the CEO's corporate objectives and the Boards Property and Asset Management Strategy (PAMS). At a local level, the assessment has been used to inform design and management decisions. The results of the assessment have been presented to site master planning and management groups who have then developed their own projects to enhance their greenspaces.

The success of this transferable model has been recognised in the NHSScotland Climate Emergency & Sustainability Strategy which now includes a requirement for other Boards to take a similar approach to assessing the extent and quality of its green assets.

## Facilities Innovation Award

The Facilities Innovation Award recognises the individual or team who has made a significant contribution to the improvement of healthcare facilities within NHSScotland.

The shortlist for the 2022 award are:

### **NHS Greater Glasgow and Clyde: The Development and Implementation of the Domestic Services 10-Step Planner within GG&C Health Board**

The development of a governance process to facilitate the consistent achievement of high-quality cleanliness standards, delivered by an appropriately trained workforce and within agreed operational parameters, which supplement the national Facilities Management Tool reporting system.

### **NHS Lothian: E-bike Pilot**

Staff in the Podiatry department are the first to be part of a new trial in NHS Lothian designed to reduce carbon emissions, save money and support staff wellbeing. The department are the first in Lothian to introduce e-bikes as a way of travelling to see patients.



## Collaboration: Working in Partnership Award

This award recognises the coming together of a team who through effective collaboration synergise their expertise to add greater value to their projects. The collaboration brings together a multi-disciplinary group of people who can bring their unique perspectives in order to achieve the project goals.

The shortlist for the 2022 award are:

### **NHS Greater Glasgow and Clyde: Care Home COVID Vaccine Delivery Plan**

There was a collaborative approach by transport, nursing staff, nursing bank, Health and Social Care Partnership and Pharmacy staff.

This same process has now delivered three vaccines as well as a flu vaccine which has been a successful in providing care to residents in care homes.

### **NHS Greater Glasgow and Clyde: GGC Catering Strategy Team 2019-2022**

In line with the National Catering Strategy, NHS Lothian approached NHS Greater Glasgow & Clyde (GG&C) for advice and support in the provision of products to the Royal Hospital for Children and Young People/DCN (RHCYP/DCN) during a period of strategic operational change. Traditionally, using an outside source would be the standard approach. The connection and shared expertise across the two NHS boards demonstrated that a collaborative approach provides mutual benefits and improved outcomes.

### **NHS Greater Glasgow and Clyde: Kerr Clarkson and Dominique Chaput**

Kerr Clarkson and Dominique Chaput worked on the commissioning of the water system of the newly refurbished ward in the Royal Hospital for Children.

They were involved in designing testing regimes, collation, and presentation of results in order to give assurance that the system performance met the requirements for the safe admission of patients.

### **NHS Greater Glasgow and Clyde: New Woodside Health Centre Art and Environment Strategy Group**

The Woodside Garscube link story shows how artists, designers and public health improvement teams sustained work with partners to open access to a major greenspace, bringing inspiration and health improvement to the Northwest of Glasgow City. The Woodside Health and Care Centre (HCC) arts and environment strategy group's purpose was to provide strategic direction to enable a co-ordinated and inclusive approach to the integration of therapeutic design, art and ongoing creative arts activity leading to improved health and wellbeing at the New Woodside HCC, wider campus and local area.





## **NHS Greater Glasgow and Clyde: Patient Discharge Service**

This transport service is a collaborative approach across Clinical Services, Facilities and Transport. It is for patients who required additional support beyond a standard car or taxi but who do not require an ambulance. The model was designed using intelligence from discharge data to expedite discharges in the afternoon and ensure patients can return to a homely setting at the earliest opportunity. It provides a timely and patient centred approach, with potential to enhance whole system patient flow thus generating timely availability of inpatient beds.

## **NHS Lanarkshire: Monklands Replacement Project**

NHS Lanarkshire first engaged on the potential to rebuild or refurbish University Hospital Monklands in a consultation on its healthcare strategy Achieving Excellence in 2016.

Alongside work to identify a site and progress a concept design, a new clinical model has been developed in response to Lanarkshire's changing demographic. The new clinical model also aligns to the overall strategic ambition to develop pan-Lanarkshire centres of excellence that support the future healthcare needs of the wider West of Scotland. There is wide stakeholder into the project, across the board itself and inclusive of public involvement.

## **NHS Lanarkshire: Working in Partnership – Lanarkshire Green Health Partnership**

The Lanarkshire Green Health Partnership (LGHP) was formed in April 2018 and is helping to connect health & social care with nature. Lanarkshire is rich in greenspace, parks and nature but it has historically been an underused asset. The project aims were to raise awareness and confidence of the workforce and community to access, promote and utilise green health spaces.

## **NHS Lothian: Founding Member of the Edinburgh Climate Compact**

The Edinburgh Climate Compact is an initiative of the Edinburgh Climate Commission. It is a commitment by the leading businesses and employers in Edinburgh to act within their own organisation to contribute to a green recovery and radically reduce the city's carbon emissions. The Climate Compact outlines clear actions that organisations commit to in signing the document.

## **NHS Lothian: Little France Soft FM Area Team - Leadership Sasha Hill**

The project was to transfer the Portering and Waste Management Service from the Private Finance Initiative (PFI) at Edinburgh Royal Infirmary into NHS Lothian. Prior to the transfer non-patient movement portering (including waste management), goods yard management and linen services were provided by a contractor Engie as part of the PFI.

The successful transfer required significant collaboration and flexibility between NHS Lothian Soft FM, NHS Payroll and Employee Relations, Engie (now Equans) Management and Staff Partnership.

## NHS Lothian: New Climate Challenge Grants

The Climate Challenge Grants programme, launched in January 2022, complements work that is already being undertaken by NHS Lothian to develop a health service that is environmentally sustainable for future generations. The programme supports NHS Lothian staff to deliver projects that will reduce harmful greenhouse gases and help tackle the issues surrounding climate change, limiting their impact on the environment, and making a significant difference to public health.

The initiative recognised the huge motivation and commitment to embed sustainable practices across NHS Lothian and offers support; staff implement changes in their own areas that will contribute to the overall aims of organisation.

## NHS Lothian: Reduction in national waste - Uniform Packaging

An NHS Lothian sewing room supervisor queried why items that form part of NHSScotland Uniforms are packaged as single items, generating significant amounts of avoidable plastic waste.

The question prompted partnership working between NHS Lothian, National Procurement, NHSScotland Board sustainability leads via the National Environmental Sustainability Group and the supplier. By moving to two items per package, the project halved the amount of plastic packaging in the supply of NHSScotland uniforms without major disruption to any of the NHS Boards.

## NHS Lothian: Royal Edinburgh Hospital Community Partners

The Royal Edinburgh Hospital (REH) was the first hospital in Scotland to receive the Green Flag Award. It is an internationally recognised mark of quality, which has been awarded to the hospital for its well managed natural spaces that benefit patients, staff, and the local community. This was only possible through the partnership approach to developing and managing these spaces.

The NHS Lothian Grounds and Gardens teams manage the site with the support of third sector organisations and patient volunteers. The Cyrenians have developed and run an award-winning therapeutic community garden, Volunteer Edinburgh support patients to access and improve courtyards and other greenspaces, ArtLink use estate creatively to provide meaningful activity for patients. This work is supported by the NHS Lothian Charity and the Patients Council.





## Educational Achievements

**Kirsten Allen, NHS Greater Glasgow and Clyde:** 1st Class Honours Degree for BSc Environmental Management from Glasgow Caledonian University

**Craig McGregor, NHS Greater Glasgow and Clyde:** BEng (Hons) Building Services Engineering from Glasgow Caledonian University

**James Foster, NHS Lothian:** BSc in Construction and the Built Environment

**Sarah McKnight, NHS Greater Glasgow and Clyde:** MSc in Facilities Management from Napier University

**Daniel Millan, NHS Borders:** SCQF Level 7 in Painting and Decorating

**Norman Colquhoun, NHS Lothian:** HNC in Facilities Management and “The Principal’s Prize for Outstanding Academic Achievement”

**Tian-Qing Huang, NHS Lothian:** HND In Facilities Management

**James McIlreavy, NHS Greater Glasgow and Clyde:** HNC in Construction Management from West College Scotland, Paisley

**Paul Shorts, NHS Greater Glasgow and Clyde:** HNC in Building Services Engineering - Glasgow Clyde College Anniesland Campus

**Kieran Watters, NHS Lothian:** SVQ3 Engineering Maintenance at SCQF Level 6 (Electrical)

**Robert Allan, NHS Lothian:** SVQ3 Engineering Maintenance at SCQF Level 6 (Electrical)

**Muriel Young, NHS Lothian:** NEBOSH

**Tom Watson, NHS Lothian:** NEBOSH

**David Coates, NHS Lothian:** NEBOSH

**Louise O’Hara-Bathgate, NHS Lothian:** NEBOSH

**Robert Stewart, NHS Lothian:** NEBOSH



# Speaker Programme

Thursday 3 November 2022

Time	Event			
08:45-09:45	Registration / Exhibition			
09:45-10:00	Welcome and Introduction: Pennie Taylor			
10:00-10:15	Plenary Session 1 Keynote Speaker: Introduction to NHS Scotland Assure Mary Morgan, Chief Executive, NHS National Services Scotland			
10:15-10:55	Plenary Session 2 Keynote Speaker: The role of NHS Scotland Assure in Improving the Healthcare Build Environment for Patients and Staff Alan Morrison, Interim Deputy Director Health Infrastructure, Investment & PPE and Alex McMahon, Chief Nursing Officer, Scottish Government			
10:55-11:25	Tea / Coffee / Exhibition			
	<b>Highlandman Room</b>	<b>Ferntower Suite</b>	<b>Tasting Room</b>	<b>Earn Room</b>
	<b>Parallel Session 1A</b>	<b>Parallel Session 1B</b>	<b>Parallel Session 1C</b>	<b>Parallel Session 1D</b>
11:25-12:05	<b>Food in Hospitals</b> Abigail Cork, NHS Scotland Assure and Caroline McKenzie, NHS Tayside	<b>Net Zero Design &amp; SHTN 02-01 Sustainable Design and Construction (SDaC) Guide</b> Leanne Hannah, ARMILA Sustainability Services, Marie Porteous, NHS Lanarkshire and Alastair Kay, NHS Ayrshire and Arran	<b>National Infection Prevention and Control Manual, Developments</b> Emma Hooker, NHS Scotland Assure	<b>NHS Scotland Assure Assurance Service</b> Ian Storrar and Thomas Rodger, NHS Scotland Assure and George Reid, Carole Callaghan and Laura Gilchrist, NHS Lanarkshire
	<b>Parallel Session 2A</b>	<b>Parallel Session 2B</b>	<b>Parallel Session 2D</b>	<b>Parallel Session 2C</b>
	<b>Food for Life &amp; Sustainability in Public Food</b> Cathy Pendreigh and Margaret Gilmour, Soil Association	<b>Equipping NHS Highland Community Hospitals, a case study</b> Steven Wilson and Ryan Nelson, NHS Highland and Rebecca Murray, NHS Scotland Assure	<b>Alternative methods for reaching Net Zero</b> Dr David Telford, Sonas Energy and Neil McDougall, Structured Property Consulting	<b>Epidemiological Analysis of a Waterborne Incident</b> Dr Vhairi Bateman, NHS Grampian and Stephanie Walsh, NHS Scotland Assure

Time	Event			
12:45-13:45	Lunch / Exhibition			
	Parallel Session 3B	Parallel Session 3A	Parallel Session 3D	Parallel Session 3C
13:45-14:25	<b>Importance of Early End of Contract Management (PPP)</b> Stuart Farquharson, NHS Scotland Assure	<b>Climate Emergency and Sustainability Strategy</b> Caitlin Hamlett, NHS Scotland Assure and Mhairi Roberts, Scottish Government	<b>The Role of Authorising Engineers</b> Pete Sellars, CEO IHEEM	<b>Building Safer Hospitals: How Clinicians and Engineers can work together for patient safety</b> Hayley Kane, and Paul Weaving, NHS Scotland Assure
14:30-15:10	Keynote address and Presentation of Excellence Awards: Humza Yousaf MSP, Cabinet Secretary for Health and Social Care and Keith Redpath, Chair, NHS National Services Scotland			
15:10-15:40	Tea / Coffee / Exhibition			
15:40- 16:20	Plenary Session 3: Dr Chris Turner, Civility Saves Lives			
16:20-17:00	Plenary Session 4: Professor John Cole CBE, Independent Consultant			
17:00-17:10	Conference Summary and Close: Pennie Taylor			
17:10-18:00	Exhibition Visit with complementary drinks			
19:00	Drinks Reception followed by Conference Dinner			





## Friday 4 November 2022

Time	Event			
09:00-09:30	Registration / Exhibition			
09:30-09:40	Welcome and Introduction: Pennie Taylor			
09:40-10:20	Plenary Session 5: Protective Security Challenges, UK Government Security Advisor			
	<b>Highlandman Room</b>	<b>Ferntower Suite</b>	<b>Tasting Room</b>	<b>Earn Room</b>
	<b>Parallel Session 4A</b>	<b>Parallel Session 4B</b>	<b>Parallel Session 4C</b>	<b>Parallel Session 4D</b>
10:20-11:00	<b>Domestic Scheduling Tool</b> Belinda O'Shea, NHS Scotland Assure, Christina Cox, NHS Lanarkshire and Michael Everden, Synbiotix	<b>Built asset optimisation and resilience through Assure Information Management System (AIMS) and a Digital Estate approach</b> David Philp, AECOM and Chris Mills, Bentley Systems	<b>Contamination of hygiene products with Pseudomonas aeruginosa: a UK wide incident</b> Shona Cairns, NHS Scotland Assure	<b>Natural Ventilation in Healthcare</b> Jerry Slann, The Institute of Occupational Medicine
11:00-11:40	Tea / Coffee / Exhibition			
	<b>Parallel Session 5D</b>	<b>Parallel Session 5B</b>	<b>Parallel Session 5A</b>	<b>Parallel Session 5C</b>
11:40-12:20	<b>The Green Theatre Project - improving practices, processes and pieces of equipment</b> Ken Barker and Hal Robinson, NHS Highland	<b>NHS Scotland Assure Capital Programme Strategy and Plan</b> Karen Houston, Cameron Consulting	<b>National CDU Decontamination Collaborative Programme</b> Derek Cullen, NHS Scotland Assure and David Hill, NHS Lothian	<b>Architecture and Healthcare, A German Perspective</b> Wolfgang Sunder, The Technical University of Braunschweig
12:20-13:00	Plenary Session 6: Terry Waite CBE, Humanitarian			
13:00-13:10	Conference Summary and Close: Pennie Taylor			
13:10-14:10	Lunch / Depart			

# Plenary Speakers



## Conference Host

### Julie Critchley, NHS Scotland Assure

Julie was appointed Director NHS Scotland Assure and took up her post in September 2021.

She joined the NHS in England as an Allied Health Professional, Podiatrist, in 1992 and has worked in a number of roles across the NHS including, Director of Operations, Transformation Director and Integration Director Roles. Working predominantly on the large-scale integration agenda across mental health, physical health and social care.

Prior to joining NSS Julie's previous role was Head of Due Diligence and Clinical Disaggregation for the NHS Improvement facilitated mandated transfer of Pennine Acute Trust into Salford Royal Foundation Trust and Manchester Foundation Trust, a transaction of approximately £600million with 10,000 staff. Julie is keen to drive the services provided by NHS Scotland Assure to deliver improved outcomes for the healthcare build environment.

[@NHSNSS](#)



## Conference Chair

### Pennie Taylor, Pennie Taylor Communications

Pennie is an award-winning freelance journalist and broadcaster who specialises in health and care issues. BBC Scotland's first Health Correspondent, she has also worked for a number of newspapers including The Sunday Herald and Scotland on Sunday. Pennie is a regular commentator on health and social affairs issues, and is a passionate advocate of older people's rights.

As a former Head of Communications for the then Lothian University Hospitals NHS Trust, where she worked between 2000 and 2002, Pennie has inside knowledge of how the health service works. This gives her an informed perspective from which to approach and stimulate debate.

A sought-after conference Chairperson and discussion facilitator, Pennie believes that good communication and public participation is key to meeting the challenges that Scotland faces.

[@ptupdate](#)

## Plenary Session 1

10:00-10:15, Thursday 3 November,  
Melville Hall



### Mary Morgan, Chief Executive NHS National Services Scotland

Appointed as NHS NSS Chief Executive in April 2021, Mary joined the National Health Service in Scotland in 1982 and subsequently pursued her career in Nursing and NHS management, leading major change programmes across Health and Social Care. Mary has worked as the Director of Strategy, Performance and Service Transformation, Director of the Scottish National Blood Transfusion Service and Director of Health Protection Scotland within NSS since 2008. Passionate about the NHS and public service, she has made a positive difference in Acute Hospital and National settings.

[@NHSNSS](#)

## Plenary Session 2

10:15-10:55, Thursday 3 November,  
Melville Hall



### Alan Morrison, Interim Deputy Director Health Infrastructure

Alan is CIPFA qualified accountant and has spent the bulk of his professional career working in health finance at the Scottish Government. He is currently Deputy Director of Health Infrastructure and Investment and has policy responsibility for capital investment in the health portfolio and NHS facilities.



### Alex McMahon Chief Nursing Officer, Scottish Government

Alex McMahon was appointed Chief Nursing Officer in January 2022.

He was previously Executive Director for Nursing, Midwifery and Allied Healthcare Professionals in NHS Lothian. As Chief Nursing Officer, Alex has professional responsibility for two thirds of the NHSScotland workforce, as his role has responsibility for nursing, midwifery, allied healthcare professionals and healthcare scientists.

Alex also leads on a number of key policy areas, including infection prevention control. He has worked across the NHS, private sector, government and the Royal College of Nursing in previous posts and holds two honorary professorships with the University of Stirling and Queen Margaret University.

## Keynote Address and Awards

Time 14:30-15:10, Thursday 3 November, Melville Hall



### Humza Yousaf MSP, Cabinet Secretary for Health and Social Care

He was born in Glasgow on April 7, 1985. He was educated at Hutchesons' Grammar School and the University of Glasgow, graduating with a degree in Politics. He is also an alumnus of the US State Department's prestigious International Visitor Learning Programme.

He went on to work in the Scottish Parliament as an aide to the late Bashir Ahmad MSP. He was elected as an MSP for the Glasgow region in May 2011, and to the constituency of Glasgow Pollok since 2016.

He has held a number of ministerial positions in the Scottish Government since 2012, and joined cabinet in June 2018 as Cabinet Secretary for Justice.

He was appointed as Cabinet Secretary for Health and Social Care in May 2021.



### Keith Redpath, Chair NHS National Services Scotland

Keith Redpath became chair of NHS National Services Scotland on 1 August 2019.

Prior to his retirement in 2017, Keith spent a total of 42 years working in both local government and the NHS in Scotland. Since retiring, he has been appointed to non-executive positions with the Care Inspectorate and the Scottish Social Services Council.

Keith was the chief officer of the West Dunbartonshire Integrated Joint Board and between 2015 and 2017, he was the Chair of the National Chief Officers Group representing the views of his fellow chief officers across the health and care system in Scotland. He spent 20 years promoting and advocating for the integration of health and social care services, which is one of the government's key priorities in its Health and Social Care Delivery plan.

Keith gained extensive experience in the development of change programmes and partnership working, in the continuous delivery of organisational and financial objectives, all with a focus on delivering improved outcomes for the users of the services that the organisations that he led had a responsibility to.

[@NHSNSS](https://twitter.com/NHSNSS)

## Plenary Session 3

15:40-16:20, Thursday 3 November,  
Melville Hall



### Dr Chris Turner, Civility Saves Lives

Chris is consultant in emergency medicine at University Hospitals of Coventry and Warwickshire. He is interested in governance and highly performing teams, and this has led him on a journey from being blame and process focused to something completely different, Civility Saves Lives, a campaign that aims to raise awareness of the impact of behaviour on performance at individual, team and organisational level. Over the last few years this idea has gained momentum and traction across healthcare and beyond.

## Plenary Session 4

15:40-16:20, Thursday 3 November,  
Melville Hall



### Professor John Cole CBE RIBA Independent Consultant

John Cole is an architect and an Honorary Professor at Queen's University Belfast. He is an independent consultant and strategic client

adviser on the planning and implementation of major national and international infrastructure projects. Amongst these he is currently involved in the construction of a new paediatric Hospital in Dublin, for which he chairs both the design and commissioning committees.

He was previously Deputy Permanent Secretary in the DHSSPS in Northern Ireland, where he developed an integrated model for healthcare infrastructure and introduced a range of innovative procurement models, aimed at achieving greater effectiveness in the delivery of health services and greater quality in the design and construction of healthcare buildings. During this period, he had overall responsibility for the strategic planning, design and construction of a capital programme of health projects with a value in excess of £3.5 billion.

From 2008 to 2012 he was Chair of the European Health Property Network (EuHPN), which develops and shares knowledge and research in the planning, design and implementation of health facilities.

In 2016, he chaired an Independent Inquiry into building failures in Edinburgh schools, which identified systemic failings across the construction industry in relation to structural safety and fire protection. This has led to significant changes in the approach to quality.

John is a member of the RIBA's Expert Advisory Group on the Grenfell Tragedy. In 2018, he was appointed a member of the UK Government's Industry Safety Steering Group, which is seeking to improve the industry's approach to quality and safety.

In 2013 he received a CBE for his contribution to the development of health infrastructure.

## Plenary Session 5

09:40-10:20, Friday 4 November,  
Melville Hall

### UK Government Security Advisor

The session will illustrate the range of national security threats and protective security challenges. This will include the risks associated with some of the latest digital techniques for the design, construction and operation of assets. Examples will be given of the latest physical, personnel and cross-cutting protective security countermeasures and the tools available to promote security-mindedness within an organisation and into their supply chain.

## Plenary Session 6

12:20-13:00, Friday 4 November,  
Melville Hall



### Terry Waite CBE, Humanitarian

In the early 1980's Terry Waite CBE successfully negotiated the release of several hostages from Iran and this event brought him to public attention. In 1983, he negotiated with Colonel Ghadafi for the release of British Hostages held in Libya and again was successful. In January 1987, while negotiating for the release of Western Hostages in Lebanon, he himself was taken captive and remained in captivity for 1,760 days, the first four years of which were spent in total solitary confinement.

Following his release in September 1991, he wrote his first book "Taken on Trust". This quickly became an International best-seller and headed the lists in the UK and elsewhere. Following his experience as a captive, he decided to make a career change and determined to give himself to study, writing, lecturing and humanitarian activities. His second book, "Footfalls in Memory", was published in the UK in 1995 and again was a best-seller.

# Parallel Session Speakers

## Parallel Session 1, 11:25-12:05, Thursday 3 November

### 1A: Food in Hospitals

**Venue: Highlandman Room**

**Chair: John Wright**

NHS Boards in Scotland have taken part in a national assessment programme during 2020-21 to review their provision of catering services in line with the Food in Hospitals Catering and Nutrition Specification. This session will share the reported findings of that review, and update on the service improvement activities being undertaken by boards as recommendations from the review.



#### **Abigail Cork, NHS National Services Scotland**

Abigail is a Programme Manager within the Facilities Services Team at NHS Scotland Assure, with over 20 years' experience working in project management in the public sector. She joined the team in 2011 and has since worked on a variety of programmes, with a focus on implementing digital systems to support quality assurance and service improvement for facilities services. Abigail has recently completed an MBA in Facilities Services, graduating in 2020.



#### **Caroline McKenzie, NHS Tayside**

Caroline is Head of Catering at NHS Tayside, a Registered Dietitian and Co-Chair of the National Hospital Food Provision Group which provides catering and dietetic expertise to NHSScotland and Health Facilities Scotland in relation to the Scottish Government's (2016) Food in Hospitals Specification. Caroline is also a peer reviewer monitoring NHSScotland Boards performance against the specification and very much brings both catering and dietetic expertise to enhancing food and drink experience across both the patient and non-patient setting.

## 1B: Net Zero Design & SHTN 02-01 Sustainable Design and Construction (SDaC) Guide

**Venue: Fentower Suite**

**Chair: Stuart Russell**

An overview of how to implement SDaC through the facility lifecycle, with lessons learned from the first year of use.



### **Leanne Hannah, ARMILA Sustainability Services**

A built environment sustainability consultant, with a background in building physics and more than 17 years of experience. Leanne is passionate about supporting the responsible delivery of projects, ensuring that they leave a lasting positive environmental impact and enhance the health and social wellbeing of users.

Leanne promotes a whole life approach to sustainability. Specialisms include whole life carbon assessment, building performance optimisation, environmental assessment and post occupancy evaluation.

Leanne regularly adopts strategic advisory roles, supporting sectors and organisations transition towards an inclusive net zero future. This includes Leanne's recent work with NHSScotland, where she adopted a lead consultant role on the development of the Sustainable Design and Construction guide and similarly, working with Scottish Futures Trust supporting the development of Scottish Government's Net Zero Carbon Public Sector Building Standard.



### **Marie Porteous, NHS Lanarkshire**

Marie has been the Facilities Management Lead for the Monklands Replacement Project hospital build for the last year and has worked with NHS Lanarkshire for 12 years. Her previous role was Head of Sustainability & Environment Manager for Lanarkshire.

Marie is a fellow of Institute of Healthcare Engineering & Estates Management (IHEEM) and obtained a BEng (Hons) Energy Engineering from Napier University in 1990.

Marie has a real interest in biophilic design and making the connection between this and improvements in physical health and wellbeing.



### **Alastair Kay, NHS Ayrshire and Arran**

Alastair is the NHS Ayrshire and Arran's net zero and sustainability champion for the NTC, Ayr hospital theatre project. Creating their first net zero hospital using the new sustainable design and construction guidance alongside the Scottish Net Zero Building Standard. Championing sustainability in all aspects of the project ensuring health and wellbeing are at the heart of design reducing impact on the environment, addressing circularity and climate change. He chairs the National Energy Forum and sits as a director on the board of the Energy Agency West of Scotland.



## 1C: National Infection Prevention and Control Manual, Developments

**Venue: Tasting Room**

**Chair: Annette Rankin**

This session will give an overview of the most recent developments within the National Infection Prevention and Control Manual, which will include a new chapter on the Built Environment.



**Emma Hooker, NHS Scotland Assure**

Emma joined ARHAI Scotland in 2018 and currently leads the healthcare scientist cohort in the Infection Prevention and Control team. Emma has a degree in microbiology and infection, a masters degree in human nutrition (public health), and a background in HACCP management. The ARHAI Scotland healthcare scientists specialise in production of evidence-based guidance for a range of healthcare associated infection (HAI) topics including the built environment (water and ventilation).

## 1D: NHS Scotland Assure Assurance Service

**Venue: Earn Room**

**Chair: Julie Critchley**

The presentation will provide an insight to the Assurance Service provided through NHS Scotland Assure including an overview of the key stage assurance review process and a sharing of lessons learned to date.



**Ian Storrar, NHS Scotland Assure**

Ian leads the Engineering and Assurance Service teams within NHS Scotland Assure.

He is a Chartered Engineer with over 44 years' experience in the construction industry.

He provides support in Engineering to NHSScotland as a whole and represent NHSSA, working directly with Scottish Government Health Directorates and with counterparts in the other UK devolved administrations health departments to lead, develop, interpret and to deliver national objectives linked to policy development and operational planning. Ian also represents the NHS in several European and British Standards committees.



### **Thomas Rodger, NHS Scotland Assure**

Thomas is Head of Engineering for NHS Scotland Assure. As part of his role, Thomas has been a core part of the launch of NHS Scotland Assure, supporting the development of various service streams including the Assurance Service that oversees the Key Stage Assurance Review Process. Thomas and his team also provide subject matter advice and guidance on various technical disciplines including electrical services, ventilation, domestic water systems and medical gas. Thomas is also a member of various national and international technical committees helping to shape the future of the healthcare built environment.



### **George Reid, NHS Lanarkshire**

George is an experienced senior project professional with in excess of 25years experience within the NHS and 11 years within the local authority.

From the late 90's, he has been instrumental in the planning and development of several NHS refurbishment and construction projects.

George has held operational management roles within NHS FM Services, a Senior Deputy Director Role and now Monklands Replacement Project.

He has been working in collaboration with NHS Assure prior to and throughout the OBC KSAR for Monklands Replacement Project and is passionate about shared learning across the whole NHSScotland estate.



### **Carole Callaghan, NHS Lanarkshire**

Carole has been employed by the NHS Lanarkshire for 10 years and has held administrative, business support and technical roles across PSSD based in University Hospital Monklands. Carole was the Project Administrative Assistant for the refurbishment of the current Monklands Hospital in Airdrie.

Carole has a great deal of experience across Facilities Management. Carole joined the Monklands Replacement Project in 2019 and became Assistant Project Manager in 2021.

Carole has played a key role working in collaboration with NHS Assure colleagues for MRP's OBC KSAR.



### **Laura Gilchrist, NHS Lanarkshire**

Laura Gilchrist - Assistant Project Manager within NHS Lanarkshire working as part of the Monklands Replacement Project.

Laura has been employed by NHS Lanarkshire for 15 years and has held administrative and business support roles initially based in University Hospital Monklands and then across North Lanarkshire Health & Social Care Partnership localities. In 2016, Laura undertook an English Language and Literature degree via distance learning and graduated in 2021 with Honours. Laura joined Monklands Replacement Project in 2018 supporting the project director and, in 2021, became an Assistant Project Manager within the project.

## Parallel Session 2, 12:05-12:45, Thursday 3 November

### 2A: Food for Life & Sustainability in Public Food

**Venue: Highlandman Room**

**Chair: Derek Cullen**

This session will be a discussion of how we can utilise public sector food, including that served in hospitals, to deliver on wider societal goals. Hospital food plays an important role in nourishing the most vulnerable, but it is also an important policy lever which should be utilised to tackle climate change, improve biodiversity and invest in communities. This session will examine these themes and highlight how the Food for Life Served Here award can provide a mechanism for Health Boards to deliver on the obligations of the Good Food Nation Act.



#### **Cathy Pendreigh, Soil Association**

Catherine is a Partnerships Manager with the Soil Association's Food for Life Scotland programme. Food for Life Scotland is a Scottish Government funded programme which supports the public sector to serve more fresh, healthy and sustainable food through the certification scheme Food for Life Served Here. Catherine works with a range of stakeholders to promote the programme and make the case for the policy benefits that it can bring.



#### **Margaret Gilmour, Soil Association**

Margaret is Senior Partnerships Manager at Soil Association Scotland. Working within the Food Team she is responsible for establishing, developing and supporting relationships across the public sector in Scotland.

As a former manager in both the NHS and Local Government, she understands the context for the provision good food in the public sector and the important role that food and the Food for Life programme offers in helping organisations achieve positive outcomes in relation to health, education, the environment and the economy.

Margaret also has experience as a member of the Patient, Public Involvement panel within Forth Valley Hospitals.



## 2B: Equipping NHS Highland Community Hospitals - a Case Study

Venue: Ferntower Suite

Chair: Steven Hendrie

Overview: An overview of projects in Aviemore and Skye including:

- Equipping processes from the Health Board perspective
- Equipping during COVID-19 and virtual working – challenges and successes
- Lessons learned



**Steven Wilson, NHS Highland**

Steven trained and started out as a Project Engineer within the Oil & Gas industry, managing programme, budget and quality on subsea equipment manufacturing projects with a value of up to £40m. In November 2017, Steven joined the NHS Highland Estates Team as a Project Manager and has been working primarily on the Badenoch & Strathspey Service Redesign, which includes the £20m Badenoch & Strathspey Community Hospital and the refurbishment of Grantown Health Centre.



**Ryan Nelson, NHS Highland**

Graduated with a first class honours degree in Architectural Technology whilst working part-time with NHS Highland. After graduating, Ryan moved to New York City to work as an Assistant Site Manager for Turner Construction, working on a variety of multimillion-dollar projects. Ryan returned to the UK at the start of the pandemic and joined back with the NHS as an Architectural Technician. Shortly after, Ryan accepted a new role as Project Manager on the new Broadford Hospital in Skye which was successfully opened in March 2022.



**Rebecca Murray, NHS Scotland Assure**

Starting her career at Edinburgh Napier University as a technician in the Simulation and Clinical Skills Centre, Rebecca joined the NHS Scotland Assure equipping team in 2015. Now working as a project manager, Rebecca has managed projects across Scotland including the recently completed Badenoch and Strathspey Community Hospital in Aviemore and the Broadford Hospital in Skye. Rebecca and the wider team provide a full equipping service including equipping programme management, design stage input, scheduling, equipment specification, procurement, on-site management of logistics and commissioning.

## 2C: Epidemiological Analysis of a Waterborne Incident

**Venue: Earn Room**

**Chair: Annette Rankin**

This session will examine how epidemiological analysis can assist when dealing with an incident.



### **Dr Vhairi Bateman, NHS Grampian**

Vhairi graduated from Dundee University in 2003 and completed Infectious Diseases/ Medical Microbiology joint training in 2017. Since then, she has worked as a consultant in NHS Grampian working in the Infectious Diseases ward/out-patient clinic, Microbiology lab and Infection Prevention and Control Team. Vhairi has developed an interest in infection control in the built environment leading outbreak investigations and sitting on the water and ventilation safety groups. She is the chair of the antimicrobial prescribing group and the lead for OPAT having re-established the service in 2022.



### **Stephanie Walsh, NHS Scotland Assure**

Stephanie is a Principal Healthcare Scientist in ARHAI Scotland's Data and Intelligence Team. After graduating with BSc (Hons) Forensic Chemistry, Stephanie spent eight years with NHS Greater Glasgow and Clyde Infection Prevention and Control, setting up and managing surveillance systems and providing data and analytical support during outbreak and incident investigations. Since joining ARHAI (formerly Health Protection Scotland) in 2015, her work has mainly focussed on the delivery of national surveillance programmes for reduction of Healthcare Associated Infection and providing epidemiological support to NHS boards investigating higher than expected incidence of infection.

## 2D: Alternative methods for reaching Net Zero

**Venue: Tasting Room**

**Chair: Paul Allen**

This session will explore the feasibility of heat and power purchase agreements to supplement existing power and heat supplies, which will in turn support the NHS trajectory to Net Zero.



### **Dr David Telford, Sonas Energy**

David is a professional physicist and engineer, working in Energy, and Sustainability. He has over 20 years' experience as a consultant in the built environment. David holds an Engineering Doctorate, is a Chartered Engineer, Fellow of the Energy Institute and a Chartered Energy Engineer. He is an acknowledged expert in Energy Systems.

He is currently working on a diverse range of projects focussed on the challenges of decarbonising heat and transport. Currently working with a number of clients on concept design and bringing to market opportunities for commercially viable: smart microgrid; embedded energy systems and modern low carbon heat networks.



### **Neil McDougall, Structured Property Consulting**

Neil McDougall is a Chartered Surveyor with over 30 years' experience covering a broad spectrum from commercial property development to large scale infrastructure investment. Prior to establishing his own consultancy business, he was an Associate Director at BAA Lynton/ BAA plc Property Division and responsible for the non-operational property development and investment across the three Scottish Airports, Aberdeen, Edinburgh, and Glasgow. As an Executive Committee member he was also responsible for the detailed assessment of investment and development proposals across the major South-East airports at Heathrow, Gatwick, and Stansted. Since early 2016 an increasing proportion of Neil's workload through SPC has been focussed on low carbon transition and the practical delivery of a large-scale energy projects including the delivery of the Queens Quay heat network at Clydebank.

## Parallel Session 3, 13:45-14:25, Thursday 3 November

### 3A: Climate Emergency and Sustainability Strategy

**Venue: Ferntower Suite**

**Chair: Lawson Bisset**

This session will provide an overview of progress on the ambitions and targets set out in the Climate Emergency and Sustainability Strategy 2022 - 2026 since its publication in August, including lessons learned, achievements, barriers to progress and opportunities.



#### **Caitlin Hamlett, NHS Scotland Assure**

Caitlin is Head of Climate Change and Sustainability in the Climate Change, Sustainability and Environmental Compliance team at NHS Scotland Assure. As a chartered planner and environmentalist, Caitlin has over 15 years' experience working with a wide range of stakeholders to develop and implement environmental policy, strategy and best practice in the public and third sectors.

Caitlin and the wider team provide support, guidance, training, and expert advice to Boards in meeting NHSScotland climate emergency and environmental sustainability commitments.



#### **Mhairi Roberts, Scottish Government**

Mhairi is a career civil servant and is currently working in the Scottish Government as head of NHS Climate Emergency Response and Sustainability. This role involves working with NHS Assure in the Core Programme Team, which oversees the implementation of the NHS Climate Emergency and Sustainability Strategy, as well as supporting Scottish Government Ministers.

Previously worked on PPE as part of the Scottish Government's COVID-19 response, which included addressing the sustainability and environmental impact of PPE.

Prior to that she held a number of civil service roles working on EU and Brexit issues in both the UK and Scottish Governments. She started her career in Brussels; working in the European Parliament and UK Government's representation to the EU.





## 3B: Importance of Early End of Contract Management (PPP)

**Venue: Highlandman Room**

**Chair: James McAteer**

Overview of end of contract management activities and significant risks and action plan to reduce impacts:

- TUPE
- Lifecycle
- Asset Registers
- Strategic Plan for Estate
- Lease/Sub Lease Obligations
- Financial Obligations

### **Stuart Farquharson, NHS Scotland Assure**

Stuart has over 20 years' experience in the procurement, construction and operational contract management of PPP projects in the UK across a range of sectors including health, education and justice. He has advised authorities, SPV's, contractors, service providers and funders, as well as being a Lifecycle Manager on a portfolio of education projects in Northern Ireland.

Stuart joined Health Facilities Scotland in 2019 and in his current role as End of Contract Manager is leading the SST's end of contract support to NHS Boards in Scotland.



### 3C: Building Safer Hospitals: How Clinicians and Engineers can work together for patient safety.

**Venue: Earn Room**

**Chair: Annette Rankin**

Recent high-profile events have highlighted how buildings and infrastructure can impact on the wellbeing of people receiving healthcare. This session describes collaborative working between infection prevention and engineering specialists to help ensure a safer patient environment.



**Hayley Kane, NHS Scotland Assure**

Hayley Kane is a Nurse Consultant in infection prevention and control within NHS Scotland Assure, NHS National Services Scotland. Hayley has specialised in infection prevention since 2006 when she was seconded into the service and has developed her expertise at board level, at national level as a senior nurse and as Infection Control Manager for the Scottish National Blood Transfusion service until taking up her current post in June 2021. She works within the Clinical Assurance Programme within NHS Scotland Assure which supports construction projects across NHSScotland in addition to development of educational resources/support tools to assist NHS colleagues and construction teams reduce the infection risks to patients, visitors and staff during construction and the operation of facilities. Her role also provides support to NHS boards across Scotland for infection incidents or outbreaks in accordance with national guidance.

Hayley completed her undergraduate degree at Glasgow Caledonian University in 1996 and then a BSc in orthopaedic nurse specialist in 2000 and completed her MSc Infection Control in 2014.



**Paul Weaving, NHS Scotland Assure**

Paul has been a nurse for over thirty years and was an operating theatre nurse before moving into infection prevention. He has worked in a wide variety of hospital, community, and national roles in England and Scotland. He has authored several articles and book chapters and was editor of the Journal of Infection Prevention.

He is currently Nurse Consultant, Infection Prevention and Control with NHS Scotland Assure, and an honorary lecturer with the University of Dundee. In 2018 he was awarded honorary membership of the Infection Prevention Society.

### 3D: The role of Authorising Engineers

**Venue: Tasting Room**

**Chair: Tom Steele**

The presentation will provide an overview of the role of Authorising Engineers.



#### **Pete Sellars, CEO IHEEM**

Pete has over 40 years' experience of managing and delivering professional healthcare estate & facilities services and has held senior management roles at national, strategic, and operational levels within the Department of Health and the NHS. He was Head of Profession for NHS Estates & Facilities Policy at the Department of Health and is currently the Chief Executive Officer at IHEEM. Pete is a Chartered Engineer and Honorary Professor at both the University College London and Loughborough University.

## Parallel Session 4, 10:20-11:00, Friday 4 November

### 4A: Domestic Scheduling Tool

**Venue: Highlandman Room**

**Chair: Abigail Cork**

Introducing a new digital tool being piloted in Scotland which supports the development, deployment and recording of adaptive cleaning schedules in the healthcare environment. We will hear from the supplier of the tool about its development, and from end users of the system from the pilot Board in Scotland and a trust in England to hear about how it was to implement and use the new tool, and the benefits and impact of the move over to a more digital method of service management.



#### **Belinda O'Shea, NHS Scotland Assure**

Belinda is a Facilities Support Manager at Health Facilities Scotland. Since joining HFS in 2006 she has worked within the Facilities Team delivering national support to boards across the full range of soft facilities. She is currently supporting a number of projects, including the development and implementation of the Domestic Scheduling Tool and more recently the development, training, and roll out of the Care Home Cleaning Specification.

Belinda was awarded a degree in Facilities Management at Sheffield Hallam University in 2019.



#### **Christina Cox, NHS Lanarkshire**

Tina has been with NHS Lanarkshire working in Domestic Services since 2011 in Monklands Hospital for 9 years and the last two years out in the community hospitals/health centres.

At present she is part of the trial with the Head of Hotel Services in Lanarkshire for the cleaning scheduler, she also has a keen interest in the FMT, attending the user group and feeding back to her team overseeing Synbiotix and setting up new users for the system.



#### **Michael Everden, Synbiotix**

Michael joined Synbiotix in 2019 as a Systems Implementation Manager and has been involved with the implementation and roll out of the National Catering Information System across NHSScotland. In addition to this, Michael has also been involved with the development and implementation of other Synbiotix systems including the Helpdesk System, Domestic Audit Tool and Cleaning Scheduler System. Michael is responsible for Synbiotix NHSScotland customers but has worked across the UK with both NHS and Private Sector Customers. Prior to joining Synbiotix, Michael worked with NHS Health Facilities Scotland as a Facilities Support Manager looking after national projects for Catering and Domestic Services.

## 4B: Built Asset Optimisation and Resilience Through Assure Information Management System (AIMS) and a Digital Estate Approach

Venue: Ferntower Suite

Chair: Louise Gardiner

An overview of the NHS Scotland Assure Information Management System (AIMS) Common Data Environment (CDE) in the context of NHSScotland and the interface with Digital Estate.



**David Philp, AECOM**

With over 28 years in industry David is a Chartered Construction Manager by background he is also regional lead for Women in BIM, Scotland.

David has been involved in delivering innovative Building Information Modelling (BIM), and digital asset management strategies across the globe from UK, Hong-Kong, Singapore, Australia and the Baltics.

He was seconded in the UK Cabinet Office in 2011 as Head of BIM Implementation and has been a key contributor to the UK public sector BIM mandate (GCS 2011-2016) and continues to support through his role as Impact Director at the Construction Innovation Hub. He was also seconded into the Scottish Future Trust (SFT) as Chair of the Scottish BIM Delivery Group.

David is Vice Chair of the Built Environment – Smarter Transformation (Formerly Construction Scotland Innovation Centre).



**Chris Mills, Bentley Systems**

Chris Mills, Enterprise Account Manager at Bentley Systems. Chris is responsible for Digital Estates and Owner/Operator clients in the UK and Ireland. This involves helping organisations in the built environment to leverage Bentley's suite of software solutions to accelerate project delivery and improve asset performance that sustain our economy and environment. He has 12+ years experience in digital construction technologies and information management. He has been working with NHSScotland over the past 12 months to help deliver the Assure Information Management System (AIMS) Common Data Environment (CDE) which is underpinning the broader Digital Estates and BIM strategy.

## **4C: Contamination of hygiene products with *Pseudomonas aeruginosa*: a UK wide incident**

**Venue: Tasting Room**

**Chair: Mike Weinbren**

A large recent outbreak of *P. aeruginosa* ST3875 in Norway (Oct. 2021- Jun. 2022) was found to be associated with the use of contaminated disposable wipes. These products were available in health and care settings in Scotland and across the UK, resulting in a UK national incident management group being convened. Links between the products and a number of cases and outbreaks in Scotland were investigated. A number of steps were taken to raise awareness among health and care professionals who might encounter potentially associated cases and to ensure relevant products were removed. This session will give an overview of this incident.



### **Shona Cairns, NHS Scotland Assure**

Shona is a Consultant Healthcare Scientist in ARHAI Scotland and the lead for the Data and Intelligence programme. Shona has worked in a national epidemiology role for more than 18 years, many of those focused on national point prevalence surveys and surveillance of healthcare associated infection. More recently, she has led the development of intelligence and evidence to support in the pandemic response in healthcare settings and in support of national incidents relating to contaminated healthcare products. Shona has a BSc (Hons) Immunology and Pharmacology, a postgraduate diploma in Information Technology and a Masters in Epidemiology.

## 4D: Natural ventilation for healthcare

**Venue: Earn Room**

**Chair: Ian Bryden**

The presentation will provide an insight to the use of Natural ventilation in healthcare including design principles and infection prevention and control considerations.



### **Jerry Slann, The Institute of Occupational Medicine**

Jerry is the Director of Authorising Engineers and a member of the Senior Management Team at The Institute of Occupational Medicine, and a founder member and current Chairperson of the SVH society. Through his ventilation knowledge and experience Jerry was invited to join the Surgical Plume Alliance (SPA) as an active committee member in 2021.

He has a career of over 45 years in health and safety, experienced in occupational hygiene and healthcare ventilation for the last 30 years, joining IOM in 2002.

An Authorising Engineer (Ventilation) for a number of NHS trusts and private hospitals, he leads a team of Authorising Engineers taking a pragmatic view and practical approach. Involved with reviewing designs, witnessing commissioning and undertaking validation of ventilation systems working with IOM's internal and other validation and verification specialists.



During the early stages of COVID-19 he was brought in by NHSScotland to ensure the NHS Louisa Jordan a temporary hospital had safe ventilation systems in place; being appointed as the Authorising Engineer (Ventilation) for the build stage of the field hospital, to ensure the ventilation plant was fit for purpose with staff and patients being kept safe. He was subsequently appointed Authorising Engineer for ventilation during the operational stage of the hospital.

NHSScotland also appointed Jerry as the Authorising Engineer (Ventilation) during the build stages of three regional COVID-19 test laboratories in Glasgow, Aberdeen and Edinburgh.

Combining his knowledge of ventilation and H&S Jerry is supporting SPA to increase awareness of the risks of exposure and methods of mitigation from Surgical Plume created during electrosurgical procedures.

## Parallel Session 5, 11:40-12:20, Friday 4 November

### 5A: National CDU Decontamination Collaborative Programme

**Venue: Tasting Room**

**Chair: Robert Aitken**

The presentation by the Programme Team will provide a high level overview of the Strategy aims and objectives with a focus on the work of the future design work stream.



#### **Derek Cullen, NHS Scotland Assure**

Derek Cullen is the National Programme Director, Soft Facilities Management and is part of the Facilities Services team based in NHS Scotland Assure in NHS NSS. He is currently leading on national programmes to deliver the National Catering Strategy, the CDU Decontamination Collaborative Programme and supporting the Linen Services Group to deliver the Laundry Services strategic workplan.

Derek has over 35 years facilities management experience gained in various operational and strategic roles in the NHS, local authorities and the private sector. Within NHSScotland, he has extensive senior facilities management experience previously having held the posts of Depute Director of Facilities for NHS Argyll and Clyde and prior to joining NHS NSS was FM lead for NHS 24.



#### **David Hill, NHS Lothian**

David trained as a manufacturing & production engineer at the National Engineering Laboratory in East Kilbride and worked there between 1979 and 1990. He spent a short time working for MoD in Glasgow before being appointed as a test engineer for NHSScotland in 1990.

He progressed to become Manager of Validation and Projects by 2003, with his team carrying out validation of the full range of medical device decontamination equipment throughout NHSScotland. David joined NHS Lothian in 2014 to support decontamination related projects and is now the Lead for Decontamination there.

David is a Chartered Member of IDSc and is also a mentor for students undertaking the IDSc Technical Certificate.





## 5B: NHSScotland Capital Programme Strategy & Plan

**Venue: Ferntower Suite**

**Chair: Steven Sanzone**

Overview of future strategy / approach to project delivery in NHSScotland.



**Karen Houston, Cameron Consulting**

Karen is a highly accomplished Chartered procurement professional who has an ability to unpick the complex to deliver commercially astute, yet compliant, strategies. She has a passion for delivering successful projects with positive outcomes for all. Her broad sectoral expertise in Health, Housing, Education, Higher Education, Sport and Leisure and Central Government allows knowledge transfer and innovative thinking which has seen her described as “One of the UK’s leading experts on the application of procurement rules.

She sees the bigger picture and is a crucial sounding board when it comes to strategy.” Her work in both Scotland and England offers a depth and breadth not regularly seen.

## 5C: Architecture and Healthcare, A German Perspective

**Venue: Earn Room**

**Chair: Mike Weinbren**

This session describes developments in architecture as impacting on healthcare from a German perspective.



**Wolfgang Sunder, The Technical University of Braunschweig**

Dr Wolfgang Sunder holds a degree and doctorate in architecture and studied in Münster Zurich and Berlin. After graduating in 2002, he started his professional career with Zaha Hadid Architects in London.

Since October 2008 he has been teaching and researching at the Institute of Structural Design, Industrial and Healthcare Buildings (IKE) at the Technical University Braunschweig in Germany. Over the past 10 years, Wolfgang Sunder has established healthcare construction as a central area of teaching and research at the Department of Architecture. One of his specializations is the Built Environment and IPC. As head of research at the institute and dean of studies, he continuously initiates national and international research projects and advises hospital operators on their strategic orientation. Wolfgang Sunder regularly publishes the results of his work.

## 5D: The Green Theatre Project - improving practices, processes and pieces of equipment

**Venue: Highlandman Room**

**Chair: Caitlin Hamlett**

The presentation will provide an overview of the Green Theatre Project which was initiated in NHS Highland to improving practices, processes and pieces of equipment in theatres to improve environmental sustainability in healthcare.



**Ken Barker, NHS Highland**

Kenneth Barker trained in anaesthesia in Dundee and in Sweden. He has been a consultant in Raigmore Hospital, Inverness since 2000, and in recent years developed an interest in environmental issues and sustainable medicine. He is a strong believer in grassroots change, co-founding Green Anaesthesia Scotland (@GreenAnaesScot) to spread the message about achievable change in medical practice. He was elected in 2020 to council of the Association of Anaesthetists of Great Britain and Ireland (AAGBI) and chairs the Environment and Sustainability Committee. He is now working as Clinical Lead of the National Green Theatres Programme centred at the Centre for Sustainable Delivery. When not at work he enjoys water-sports of both varieties; frozen (skiing) and liquid (windsurfing).



**Hal Robinson, NHS Highland**

Hal is a Consultant Anaesthetist in NHS Highland, and main interests are sustainability in healthcare and medical education. Hal leads the Green Theatre Project at Raigmore Hospital, and on a wider level, contributes to the NHS Highland Environment and Sustainability Project team.

# Exhibition

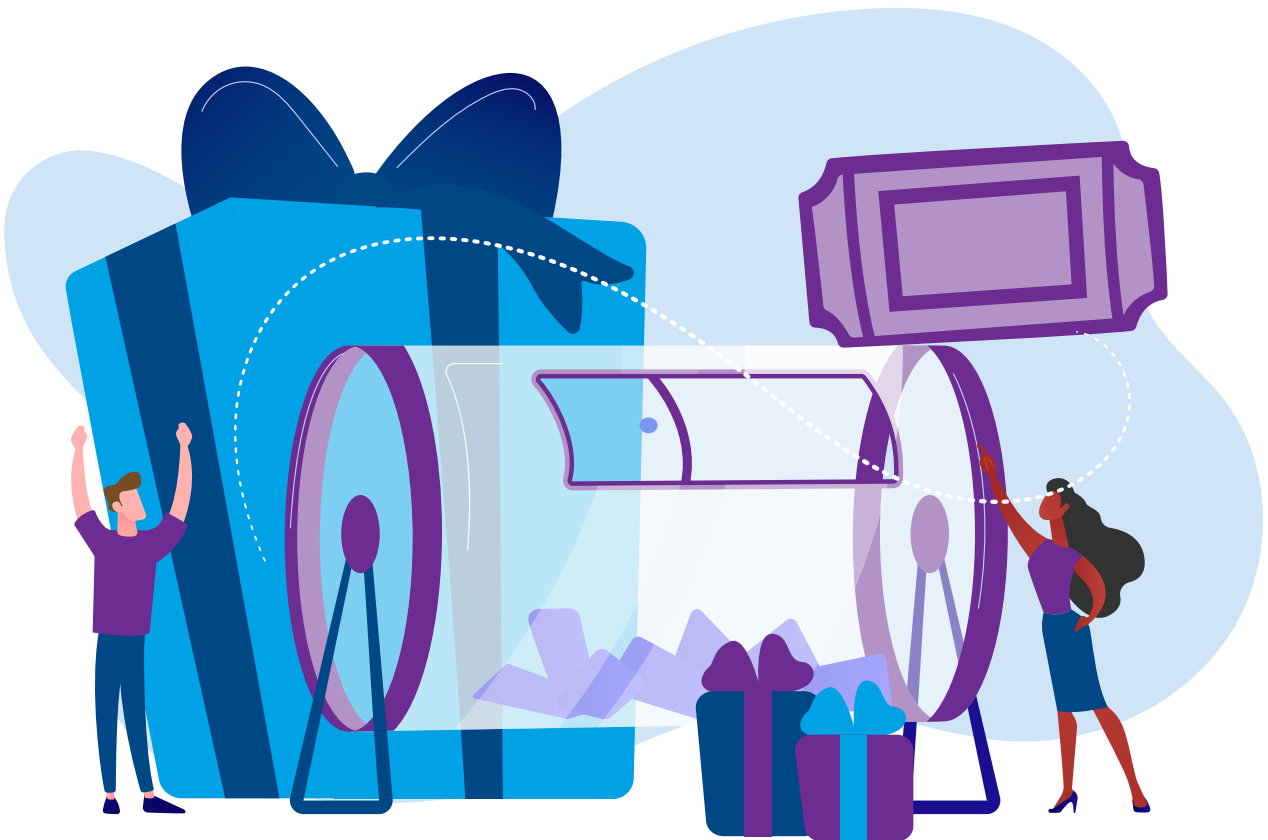
## Layout



## Exhibition Prize Draw

A small number of stamps have been given to stands in the exhibition with each room having a different colour. Collect at least one of each of the four colours, by finding these stands and asking the exhibitors to put a stamp on the back of your badge. To enter, post your badge into the box at the Conference Registration Desk before 12 noon on Friday or as you enter Melville Hall for the final plenary session at 12.20pm. The winning entry will be drawn during the Conference Closing Session.

After the event, all returned badges will be recycled but please keep and reuse your lanyard.



## Alphabetic Index of Stands

- 3i Studio Stand - 6
- Altro Ltd Stand - 16
- Angel Guard Ltd - Stand 38
- Aroma - Stand 14
- Autonomous - Stand 34
- BeaconMedaes - Stand 11
- Bentley Systems - Stand 41
- BPC Energy Ltd - Stand 19
- British Association for Supported Employment (BASE) - Stand 23
- BSRIA - Stand 32
- CPA Engineered Solutions Ltd - Stand 30
- Delabie UK Ltd - Stand 2
- Diversey - Stand 10
- Draeger UK Ltd - Stand 4
- EDF Energy - Stand 12
- Edinburgh Napier University - Stand 26
- GWF Generators - Stand 18
- Hobart UK - Stand 39
- HPI (Hospital Pipelines Ltd) - Stand 29
- IES Ltd - Stand 3
- InVentry Ltd - Stand 31
- Kingsway Group - Stand 13
- Multivista - Stand 7
- NES Healthcare Built Environment - Stand 25
- NHS National Services Scotland - Stands 27,28,36
- NHSScotland Sustainability Action - Stand 21
- Norco Group - Stand 15
- Portakabin - Stand 9
- Robert Gordon University - Stand 42
- Schneider Electric - Stand 5
- Scotmas Biosecurity Ltd - Stand 40
- Scottish Fire & Rescue Service - Stand 22
- SPACE Solutions Scotland Limited - Stand 1
- Synbiotix Solutions Ltd - Stand 24
- Systematic - Stand 17
- Vileda Professional - Stand 37
- Vital Energi - Stand 20
- Wilson Power Solutions - Stand 8

## Company Information by stand number



### Stand 1: SPACE Solutions Scotland Limited

We've spent the last 25 years building a reputation for excellence as one of the UK's leading workplace consultancy, fit-out and facilities management companies. When our teams deliver a project, they do it with commitment, quality, and vision without compromising on value and health and safety.

The past two years have seen the biggest shift in our working environment, and we've been helping public sector organisations navigate this ever-changing landscape of the workplace.

As a supplier on multiple public sector frameworks, we're here to help procurement teams optimise their workplaces, offering support, guidance, and project delivery.

**Website:** [www.spacesolutions.co.uk/](http://www.spacesolutions.co.uk/)

**Twitter:** [twitter.com/space\\_solutions](https://twitter.com/space_solutions)

**Contact details:** 01224 218500 (Head Office – Aberdeen)

**Email:** [enquiries@spacesolutions.co.uk](mailto:enquiries@spacesolutions.co.uk)



### Stand 2: Delabie UK Ltd

Delabie - Delivering Safe Water Solutions

Delabie is Europe's leading manufacturer of water controls and sanitary fittings for commercial environments. With over 30 years' experience, the company provides innovative, hygienic and sustainable solutions for healthcare and highly frequented environments in the public and commercial sectors.

Delabie has developed a range of innovative solutions that deliver safe, temperature controlled hot water and reduce the risk of infection from bacteria such as *Pseudomonas aeruginosa* and *Legionella* within Healthcare water distribution networks. Innovative solutions from Delabie to address these issues include SECURITHERM pressure-balancing mechanical mixers, BIOFIL terminal filters and BIOCLIP mixers with removable bodies or spouts for disinfection.

**Website:** [www.delabie.co.uk](http://www.delabie.co.uk)

**Twitter:** [twitter.com/delabie\\_group](https://twitter.com/delabie_group)

**Contact details:** Henderson House, Hithercroft Road, Wallingford. OX10 9DG

**Telephone:** 01491 824449



### Stand 3: IES Ltd

Over the last 25+ years IES has built a solid reputation as the leading global innovator in integrated performance-based analysis for the built environment and is home to the largest building analytics team in the world. Our Digital Twin technology facilitates the creation of resource-efficient, healthy and cost-effective built-environments of any size or purpose – supporting citizens, companies, campuses, communities, cities and even countries. Simulating and analysing data to support smarter and more sustainable decision-making.

Our unique software and technology, is supported by expert consultancy and our dedicated R&D department ensures our analytical tools and industry knowledge stays pioneering and innovative.

**Website:** [www.iesve.com](http://www.iesve.com)

**Twitter:** [twitter.com/iesve](https://twitter.com/iesve)

**Contact details:** +44 (0)141 945 8500

**Email:** [sales@iesve.com](mailto:sales@iesve.com)



### Stand 4: Dräger UK Limited

Dräger is an international leader in the fields of medical and safety technology. From medical devices to hospital planning and infrastructure projects. Dräger offer a wide range of solutions and services to transform your acute medical workplaces. With Dräger design centres and showrooms, users and planners can design their hospitals under realistic conditions.

The medical division's product range covers anaesthesia workstations, ventilators, warming therapy devices, jaundice management, patient monitoring and IT, wall & ceiling supply units and surgical lights.

“Technology for Life” is our guiding principle and our mission. Wherever they are deployed – Dräger products protect, support and save lives.

**Website:** [www.draeger.com/en\\_uk/Hospital/Medical-Pendants-Infrastructure-Design](http://www.draeger.com/en_uk/Hospital/Medical-Pendants-Infrastructure-Design)

**Twitter:** [twitter.com/DraegerNews](https://twitter.com/DraegerNews)

**Contact details:** +44 (0) 1442 213 542



## Stand 5: Schneider Electric

Schneider's purpose is to empower all to make the most of our energy and resources, bridging progress and sustainability for all. We call this Life Is On.

Our mission is to be your digital partner for Sustainability and Efficiency.

We drive digital transformation by integrating world-leading process and energy technologies, end-point to cloud connecting products, controls, software and services, across the entire lifecycle, enabling integrated company management, for homes, buildings, data centres, infrastructure and industries.

We are the most local of global companies. We are advocates of open standards and partnership ecosystems that are passionate about our shared Meaningful Purpose, Inclusive and Empowered values.

**Website:** [www.se.com/uk/en/](http://www.se.com/uk/en/)

**Twitter:** [@SchneiderElec](https://twitter.com/SchneiderElec)

**Contact details:** [www.se.com/uk/en/work/support/customer-care/contact-schneider-electric.jsp](http://www.se.com/uk/en/work/support/customer-care/contact-schneider-electric.jsp)



## Stand 6: 3i Studio

Through our outstanding property software, 3i Studio creates tailored estates management solutions that will deliver you exceptional operational and financial benefits.

Our dedicated and knowledgeable people are different; our aim is not simply to build sales, but to cultivate a partnership with you through delivering the perfect solution for your business.

3i Studio's team not only understand your property management issues, but they speak English as well as techie; making working with us simple and straightforward.

**Website:** [www.3istudio.com](http://www.3istudio.com)

**Contact details:** Regents Pavilion, 4 Summerhouse Road, Northampton NN3 6BJ 0345 675 5051

**Email:** [sales@3istudio.com](mailto:sales@3istudio.com)





## Stand 7: Multivista

Multivista, part of Hexagon, is the world's leading full-service visual construction documentation provider, contracted on over 4 billion square feet of construction. Working together with over 30,000 companies, throughout 80+ international markets, these companies trust Multivista to mitigate risk, create efficiencies, and deliver a deeper level of insight throughout their project's lifecycle. Recently, Multivista has been developing its 360 deliveries to provide our clients with remote visibility and more frequent visits over the COVID-19 period. Multivista have also developed products to assist with the Digital Records and Digital Twin of key aspects of construction such as Building Envelope and Fire-stopping Including AI.

**Website:** [www.multivista.com](http://www.multivista.com)

**Twitter:** [@multivista](https://twitter.com/multivista)

**Contact details:** Alan Bryant | 07966019073



## Stand 8: Wilson Power Solutions

We are a power and distribution transformers manufacturer based in Leeds. We are pioneers of amorphous transformer technology with over 1300 installations across the UK helping many customers including the NHS save energy, money and carbon emissions. Our transformers are winners of the AEE 2021 Regional Award and IEMA 2019 Sustainability Impact Award.

Our Wilson e3 Ultra Low Loss amorphous transformer is the UK's most energy efficient distribution transformer. The energy and carbon savings from this transformer far exceed Tier 2 Ecodesign regulations and set the bar for Tier 3. This product helps accelerate the country's move towards Net Zero.

**Website:** [www.wilsonpowersolutions.co.uk/](http://www.wilsonpowersolutions.co.uk/)

**Twitter:** [@WilsonPowerUK](https://twitter.com/WilsonPowerUK)

**Contact details:** 0113 271 7588 | Westland Square, Leeds, LS11 5SS

**Email:** [marketing@wilsonpowersolutions.co.uk](mailto:marketing@wilsonpowersolutions.co.uk)

The logo for Portakabin, featuring the word "Portakabin" in white text on a red rectangular background.

## Stand 9: Portakabin

Portakabin is a market leader in the design, manufacture and installation of modular buildings, and a pioneer of advanced modular construction. Portakabin innovates, develops and delivers exceptional modular buildings across every sector. From portable cabins for construction sites to spacious offices, from stand-alone single buildings, laboratories and dressing rooms right through to award-winning modular buildings such as ultra-modern hospitals and schools - tell us what you need and leave the rest to us. With a promise to always deliver on time and on budget Portakabin can deliver buildings up to 70% faster than traditional construction.

**Website:** [www.portakabin.com](http://www.portakabin.com)

**Twitter:** [twitter.com/Portakabin\\_R](https://twitter.com/Portakabin_R)

**Email:** [caroline.holdsworth@portakabin.com](mailto:caroline.holdsworth@portakabin.com) or  
[simon.dickinson@portakabin.com](mailto:simon.dickinson@portakabin.com)



## Stand 10: Diversey

Diversey is a leading cleaning & hygiene solutions company whose purpose is to protect and care for people every day. Diversey has and always will be a pioneer and facilitator for life. We understand the critical needs and challenges of our healthcare providers and aim to reduce risks, improve patient outcomes, minimise environmental impact and improve productivity. Diversey provides solutions that integrate sustainable chemicals, floor care machines, tools & equipment, with a wide range of technology-based value-added services.

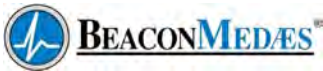
For over 98 years, we have constantly delivered revolutionary cleaning and hygiene technologies that provide total confidence to our customers across all of our global sectors, including Healthcare. We provide products and services that have been trusted by NHS Professionals for over 65 years.

**Website:** [www.diversey.co.uk](http://www.diversey.co.uk)

**Twitter:** [@DiverseyUKI](https://twitter.com/DiverseyUKI)

**Contact details:** Diversey Ltd, Weston Favell, Northampton NN3 8PD

**Email address:** [jason.craske@diversey.com](mailto:jason.craske@diversey.com)



## Stand 11: BeaconMedaes

BeaconMedaes is the world's leading medical gas pipelines turn key provider with services including preventative maintenance contracts, equipment servicing, installation and commissioning, site surveys and design services.

MyMedGas by BeaconMedaes is a new way to manage your medical gas pipeline system (MGPS). It provides one central digital location from which everything relating to the MGPS can be easily overseen and managed, with data accessed at any time and from any place.

Medical gas service and support is central to everything we offer our customers. We provide full mainland coverage and emergency 24 hour call-out so day or night, 24-7 we have your medical gas systems covered.

**Website:** [www.beaconmedaes.com/en-uk](http://www.beaconmedaes.com/en-uk)

**Contact details:** 01246 474242

**Email:** [mark.lakey@beaconmedaes.com](mailto:mark.lakey@beaconmedaes.com) or [douglas.mccallum@beaconmedaes.com](mailto:douglas.mccallum@beaconmedaes.com)



## Stand 12: EDF Energy

EDF in the UK is leading the transition to a cleaner, low emission electric future, tackling climate change and helping Britain reach net zero. It is the UK's largest producer of low-carbon electricity, meeting around one-fifth of the country's demand and supplying millions of customers with electricity and gas. It generates low carbon electricity from with eight nuclear power stations, more than thirty onshore wind farms and two offshore wind farms, and operates one of Britain's biggest battery storage units, one gas and one coal power station, EV charge-points, and combined heat and power plants.

**Website:** [www.edfenergy.com/talkpower](http://www.edfenergy.com/talkpower)

**Twitter:** EDF Business Solutions

**Email:** [letstalkpower@edfenergy.com](mailto:letstalkpower@edfenergy.com)



## Stand 13: Kingsway Group

Your Partner in Patient Safety

Kingsway Group are proud to be the market leader in creating innovative anti-ligature and anti-barricade products designed for the most demanding healthcare and challenging environments. We use our considerable design, innovation and manufacturing expertise to deliver a best value solution to exceed expectations.

From complete door eco-systems, secure vision panels, ligature-resistant hardware to washroom items, each product is designed with safety in mind.

We're proud to have been a trusted partner to 85% of NHS Trusts across the UK completing over 2,300 projects across new build and refurbishments.

**Website:** [kingswaygroup.co.uk](http://kingswaygroup.co.uk)

**Twitter:** [@KingswayGroupGL](https://twitter.com/KingswayGroupGL)

**Contact details:** Sales enquiries - 01322 610470

**Email:** [sales@kingswaygroup.co.uk](mailto:sales@kingswaygroup.co.uk)



## Stand 14: Aroma

See page 94.

**Email:** [john.tweedie@nhs.scot](mailto:john.tweedie@nhs.scot)



## Stand 15: Norco Group

Norco Group are independent specialists in stored energy systems with 30 + years' experience and expertise in the delivery of innovative solutions to support the demand for battery systems across a wide range of applications. Norco Group are also specialists in the procurement, installation, maintenance and testing of industrial batteries, stand by batteries, UPS Systems and chargers supporting critical power systems in any industrial or commercial environment, onshore or offshore.

**Website:** [www.norcoenergy.com](http://www.norcoenergy.com)

**Twitter:** [@NorcoGroupLtd](https://twitter.com/NorcoGroupLtd)

**Contact details:** Norco Group Limited Norco House, Pitmedden Road, Dyce, Aberdeen, AB21 0DT 07850888189

**Email:** Frank Burns - [fburns@norcoenergy.com](mailto:fburns@norcoenergy.com)



## Stand 16: Altro Ltd

Altro have been at the forefront of the innovation of floors and walls for almost 100 years. Today, working closely with architects, end customers, engineers, designers and contractors around the world, our insight and expertise help them transform everyday spaces into environments that can improve the wellbeing of everyone that uses them.

And by consistently turning creative thinking into practical, real-world solutions – that maintain the highest standards of safety and durability – Altro have become synonymous with quality.

Designed for possibilities. Made for people.

**Website:** [www.altro.com/uk](http://www.altro.com/uk)

**Twitter:** [@altroflooring](https://twitter.com/altroflooring)

**Contact details:** 01462 489516

**Email:** [enquiries@altro.com](mailto:enquiries@altro.com)

## SYSTEMATIC

## Stand 17: Systematic

Systematic develops software and system solutions that support the complete continuum of care, centred around the citizen. With our solutions, we enable integration, comparison, and analysis of complex data, and generate an overview that enables decision-making based on a solid foundation. Our solutions are developed to support the workflows for caregivers, service staff, and social administrators across sectors, allowing them to focus on what is most important: Providing the best possible citizen care. Systematic was established in 1985 and is the largest privately owned software and systems integrator in Denmark, with solutions sold to customers in more than 50 countries.

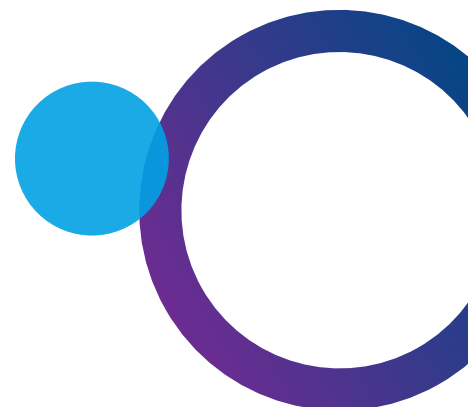
**Website:** [systematic.com/](http://systematic.com/)

**Twitter:** [twitter.com/systematicgroup](https://twitter.com/systematicgroup)

**LinkedIn:** [www.linkedin.com/showcase/systematic-healthcare/](http://www.linkedin.com/showcase/systematic-healthcare/)

**Contact details:** +45 8943 2000.

**Email:** [jacob.gade@systematic.com](mailto:jacob.gade@systematic.com)



## Stand 18: GWF Generators

GWF Generators supplies, installs and maintains generators to many NHS hospitals across the UK, both new-build facilities, and for upgrades to existing standby power supplies. We are the sole Cummins Dealer for Scotland and are headquartered in Ayrshire, with depots in Edinburgh and Warrington. We also hire standby and prime power generators and supply parts and repairs. Recent NHS projects include installing 1 x 450kVa, 2 x 1675kVa and 2 x 330kVa generators to hospitals / ambulance headquarters in Yorkshire and London and we are currently delivering a project to install 2 x 900kVa generators to a hospital in Glasgow.

**Website:** [www.gwfgenerators.co.uk](http://www.gwfgenerators.co.uk)

**Contact details:** 0333 358 5000

**Email:** [info@gwfgenerators.co.uk](mailto:info@gwfgenerators.co.uk)



## Stand 19: BPC Energy Ltd

The British Power Conversion Company is an international company offering a ground-breaking range of power protection products and services aimed at the Computer, Telecom, Midrange Computer, Data Centre, Emergency Lighting, Industrial and Three Phase sectors of the market. BPC Energy Ltd sells a variety of products & services to suit all applications and are at the forefront of modern power protection technology with expertise in design, development, and manufacturing.

**Website:** [www.bpc-ups.com](http://www.bpc-ups.com)

**Twitter:** [twitter.com/BPC\\_Energy](https://twitter.com/BPC_Energy)

**Contact details:** BPC House, Unit 12 Greatbridge Road, Romsey Industrial Estate, Romsey, Hampshire, SO51 0HR

**Email:** [sales@bpc-ups.com](mailto:sales@bpc-ups.com)



## Stand 20: Vital Energi

Vital Energi provide a comprehensive range of energy related services, systems and solutions. With over 30 years' experience, they have in-house capability to design, install, and operate decentralised energy generation and multi-utility network distribution schemes. As well as providing tailored energy management schemes to manage, measure, and reduce energy consumption, they design and install the latest renewable and low carbon technologies, from heat pumps and solar PV farms, to battery storage and waste heat recovery. Their solutions provide long term cost benefits for clients across a broad range of sectors, including healthcare, education, industry, commercial, new build, and existing residential.

**Website:** [www.vitalenergi.co.uk](http://www.vitalenergi.co.uk)

**Twitter:** [@VitalEnergi](https://twitter.com/VitalEnergi)

**Contact details:** 01254 296 000

**Email:** [sales@vitalenergi.co.uk](mailto:sales@vitalenergi.co.uk)



## Stand 21: NHSScotland Sustainability Action

Sustainability Action “Our NHS Our People Our Planet” is the overarching umbrella brand used to support and promote staff behaviour change activities that contribute to delivering sustainability across all parts of the NHS: from public health, management, allied health professionals, pharmacy, science, the ambulance service, dental teams, doctors and our front-line clinical staff to the wider healthcare team. The Sustainability Action brand aims to:

- explain what sustainability is and means through demonstrating and highlighting the sustainable actions that all NHSScotland staff can make
- raise the profile and importance of sustainability within NHSScotland
- connect and contextualise all sustainability topics and actions
- underpin all sustainability-related communications across NHSScotland.

**Website:** [nhssustainabilityaction.co.uk](http://nhssustainabilityaction.co.uk)

**Twitter:** [@SustainScotland](https://twitter.com/SustainScotland)

**Email:** [nss.sustainabilityscotland@nhs.scot](mailto:nss.sustainabilityscotland@nhs.scot)



## Stand 22: Scottish Fire & Rescue Service

We are the world’s fourth largest fire and rescue service committed to ensuring the safety and wellbeing of the people of Scotland.

We are the world’s fourth largest fire and rescue service and deliver our front-line services locally from three strategically positioned hubs based in the North, West and East of the country.

As well as preventing and controlling fires, we respond to many different emergency incidents including road traffic collisions, rope rescue, water rescue, hazardous materials and flooding as well as assisting our partner agencies to keep our communities safe.

Our aspiration is that by working together, we can continue to play a key role in ensuring the safety and wellbeing of the people of Scotland.

**Website:** [firescotland.gov.uk](http://firescotland.gov.uk)

**Twitter:** [twitter.com/sfrsyourssafety](https://twitter.com/sfrsyourssafety)

**Contact details:** Scottish Fire and Rescue Service Headquarters  
Westburn Drive Cambuslang G72 7NA

**Telephone:** 0141 646 4500



## Stand 23: British Association for Supported Employment (BASE)

Our purpose is to support, promote and develop the principles and provision of supported employment. BASE Scotland is the umbrella body that represents Scotland's Supported Business Network.

BASE is concerned with establishing collective action on national issues that cannot be addressed by individual agencies and members alone. BASE has helped to develop National Occupational Standards for Supported Employment, an accredited qualification and a framework of service quality standards. We want to see better quality support available to everyone who needs it.

**Email:** [admin@base-uk.org](mailto:admin@base-uk.org)

**Twitter:** [@base\\_tweets](https://twitter.com/base_tweets)

**Contact details:** Room 58 Aldershot Enterprise Centre, Louise Margaret Road, Aldershot, GU112PW



## Stand 24: Synbiotix Solutions Limited

Founded in 2003 and with offices in London and Cyprus, Synbiotix is an established healthcare technology company delivering solutions to some of the largest and most respected healthcare organisations in the world. With the vision of continually designing and building fit-for-purpose solutions within a modular and scalable platform, the Synbiotix name has become synonymous with quality both in terms of delivery of service and the systems it provides. The Synbiotix portfolio of electronic tools automates and streamlines operational audits, and the platform now encompass all areas of the modern healthcare estate including large-scale catering, cleaning, and workforce management systems.

**Website:** [www.synbiotix.com](http://www.synbiotix.com)

**Twitter:** [@synbiotix](https://twitter.com/synbiotix)

**Contact details:** 55 Maylands Avenue, Hemel Hempstead, Hertfordshire, HP2 4SJ. +44 (0) 330 400 4150

**Email:** [sales@synbiotix.com](mailto:sales@synbiotix.com)



## Stand 25: NES Healthcare Built Environment

NHS Education for Scotland (NES) is an education and training body and a national health board within NHSScotland. We are responsible for developing and delivering healthcare education and training for the NHS, health and social care sector and other public bodies. We have a Scotland-wide role in undergraduate, postgraduate and continuing professional development.

**Website:** [www.nes.scot.nhs.uk](http://www.nes.scot.nhs.uk)

**Twitter:** [@NHS\\_Education](https://twitter.com/NHS_Education)

**Email:** [nes.hbe@nhs.scot](mailto:nes.hbe@nhs.scot)





## Stand 26: Edinburgh Napier University

The £1.55m fund is open to researchers from any country who are looking at ways to deliver safe healthcare environments that are free from avoidable risk. The outcomes must benefit NHSScotland and align with the key priorities of NHS Scotland Assure. The team want applications and impactful research in 8 areas: Water systems (DICM); Ventilation systems (DICM); Pathogens, the microbiome, AMR, transmission risks and burden of disease in the hospital environment; Hospital design; Lessons from COVID-19; Human factors/Ergonomics/IPC; Climate change requirements; the role of safety and harms in relation to medical gases, electrical systems and fire safety.

**Website:** [www.napier.ac.uk/nhsassure](http://www.napier.ac.uk/nhsassure)

**Twitter:** [@ENUApplyScience](https://twitter.com/ENUApplyScience) #NHSSAssureFund

**Email:** [NHSAResearchService@napier.ac.uk](mailto:NHSAResearchService@napier.ac.uk)



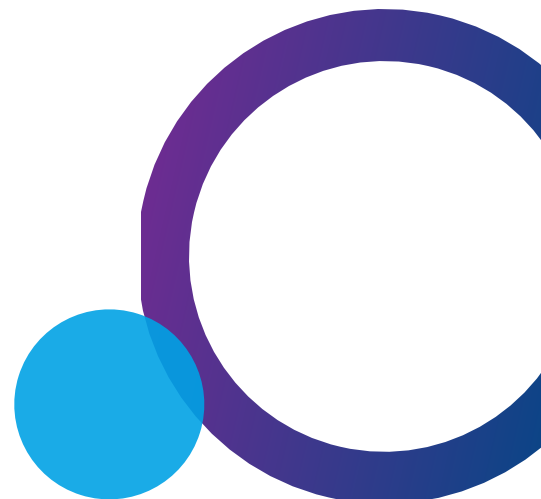
## Stands 27 - 28, 36: NHS National Services Scotland (NSS)

NSS aims to be integral to a world-leading health and care service. We set ourselves three priorities for achieving this vision.

- 1.** Enabling health and care transformation with new services: Our focus is harnessing NSS's wide-ranging skills and expertise to deliver national infrastructure solutions and services that create better health, better care and better value for Scotland.
- 2.** Underpinning NHSScotland with excellent services: NSS provides national infrastructure solutions which are integral to the delivery of health and care services in Scotland – locally, regionally and nationally.
- 3.** Assisting other organisations involved in health and care: NSS is connecting with a range of partners and stakeholders to ensure our services support the wider health and care system.

**Website:** [nss.nhs.scot/](http://nss.nhs.scot/)

**Twitter:** [@NHSNSS](https://twitter.com/NHSNSS)





## Stand 29: HPI (Hospital Pipelines Ltd)

Hospital Pipeline Installations (HPI) are proud to work hand in hand with all the NHS trusts in Scotland, and also have branches in both Manchester and Belfast. Over the last nearly 40yrs in the business we have carried out numerous new build projects and upgrades to existing buildings to the highest standards. Medical Gases should always be classed as a specialist installation, and with the stringent validation processes that must be adhered to along with engineers own training this will be the case. We pride ourselves for keeping to these high standards. Not only do HPI carry out Medical Gas work, we also have our Engineering Services branch of the business which carries out Orbital welding works, Industrial Gas works and also Gas Detection and Gas Proving works to name a few. Please take a few moments to look at our website [www.hpil.co.uk](http://www.hpil.co.uk).

It will be good to chat to you all at Crieff.

**Website:** [www.hpil.co.uk](http://www.hpil.co.uk)

**LinkedIn:** [www.linkedin.com/company/hospital-pipeline-installations-limited](http://www.linkedin.com/company/hospital-pipeline-installations-limited)

**Contact details:** 0141 887 2225

**Email:** [info@hpil.co.uk](mailto:info@hpil.co.uk)



## Stand 30: CPA Engineered Solutions Ltd

Find the right solution for your business challenge.

We combine innovative products with technical expertise and engineer solutions tailored to your business and your needs. Our strengths are our wealth of industry knowledge, technical expertise, and the solutions we design and offer, helping you solve your business challenges is our passion.

Whatever your business challenge might be; production continuity, energy efficiency, temperature control, colleague wellbeing or more. We're here to help you find a solution.

**Website:** [www.CPA-Group.com](http://www.CPA-Group.com)

**Twitter:** [@CPA\\_Group](https://twitter.com/CPA_Group)

**Contact details:** 01501 825024

**Email:** [alan.collin@cpa-group.com](mailto:alan.collin@cpa-group.com)



### Stand 31: InVentry Ltd

InVentry is the market leader for staff, visitor, and contractor management; trusted by over 8,000 organisations. Their system transforms the efficiency of entry into your care facility and provides secure digital data on every entry or exit; giving you maximum traceability for staff, contractors and visitors. By having InVentry's sign-in and visitor management system for you can welcome visitors and family members with confidence whilst preventing unauthorised personnel from gaining access to your secure site.

**Website:** [www.inventry.co.uk](http://www.inventry.co.uk)

**Twitter:** [@InVentryLtd](https://twitter.com/InVentryLtd)

**Contact details:** 0141 353 9588

**Email:** [info@inventry.co.uk](mailto:info@inventry.co.uk)



### Stand 32: BSRIA

Building Services Research and Information Association (BSRIA) is a non-profit distributing, member-based association promoting knowledge and providing specialist services for construction and building services stakeholders. Our mission is to make buildings better by improving their environmental, operational and occupational values, and we support the industry by providing guidance and solutions.

**Website:** [www.bsria.com/uk/](http://www.bsria.com/uk/)

**Twitter:** [@BSRIALtd](https://twitter.com/BSRIALtd)

**Contact details:** Old Bracknell Lane West, Bracknell RG12 7AH

**Telephone:** 01344 465600



### Stand 34: Autonomous IoT

Within our R&D and manufacturing base in Central Scotland our team of innovators combine the latest technologies to produce, environmentally conscious products powered by the sun and wind. Reducing our carbon footprint and helping to address climate change and environmental damage are key drivers in our product development.

By harnessing solar and wind power our product is able to provide LED lighting, managed by a smart controller, and integral wireless surveillance and monitoring services as additional features. Designed for optimal energy savings, it is an ideal platform for applications such as communications, smart-city connectivity, emergency alert systems and analytics.

**Website:** [www.autonomous-iot.com](http://www.autonomous-iot.com)

**Twitter:** [@autonomous\\_iot](https://twitter.com/autonomous_iot)

**Contact details:** 0800 689 1041

**Email:** [ask@autonomous-iot.com](mailto:ask@autonomous-iot.com)



### Stand 37: Vileda Professional

At Vileda Professional we develop and manufacture leading edge cleaning solutions for professional users in various application areas, such as Healthcare, Controlled Environment, General Building Cleaning and HoReCa. With over 60 years in the business we know what needs professional users in different environments have, and we offer solutions that help them to clean faster, more effectively and at lower total costs. Based on sustainability principles, innovation in cleaning has always been a main focus in the daily work of Vileda Professional.

**Website:** [www.vileda-professional.co.uk/](http://www.vileda-professional.co.uk/)

**Contact details:** Vileda Professional, 2 Chichester Street, Rochdale, OL16 2AX



### Stand 38: Angel Guard Ltd

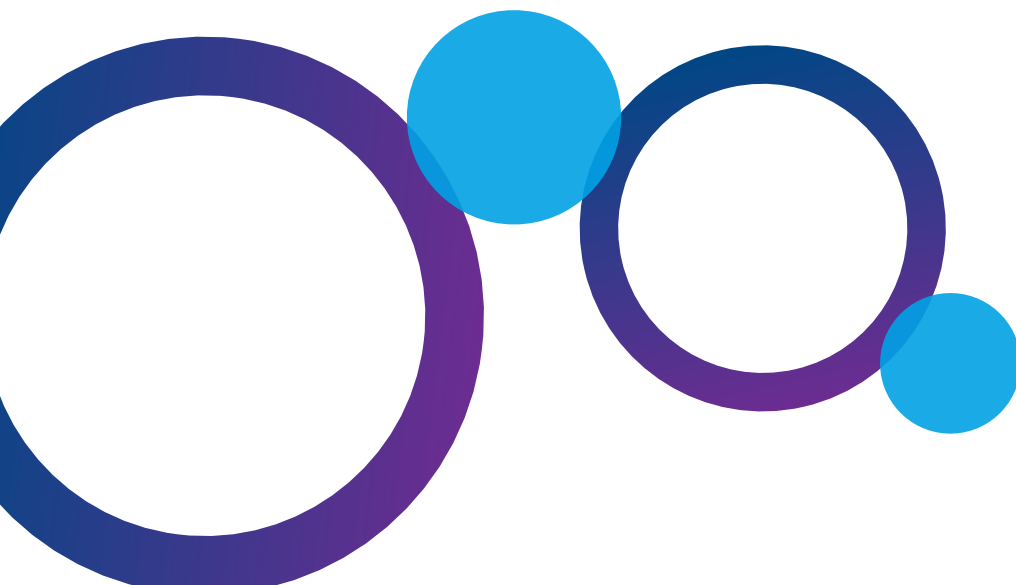
Angel Guard aims to be the world leader in providing biotechnology systems to monitor, clean and protect water within buildings of all types so that users are kept safe, whilst delivering cost savings and substantial risk reductions from water-borne pathogens such as Legionella for building owners and operators. The company aims to achieve this through use of their world-first products, their unique Michael and Gabriel world-first clinical washbasins equipped with AI technology and Clarence, their remote water monitoring box also equipped with AI technology and the world's first remote water monitoring box capable of sensing biofilm within water systems.

**Website:** [www.angel-guard.co.uk](http://www.angel-guard.co.uk)

**Twitter:** [@AngelGuardLtd](https://twitter.com/AngelGuardLtd)

**Contact details:** 0141 280 9488

**Email:** [info@angel-guard.co.uk](mailto:info@angel-guard.co.uk)





### Stand 39: Hobart UK

Hobart continues to lead in the field for Professional catering equipment, offering a comprehensive product range developing continually, with equipment developed specifically to suit the requirements of the public sector. Whether the requirements are efficient warewashing, reliable preparation, intuitive combination ovens, a high-performance cooking suite or Service cover, Hobart can deliver the solution.

**Website:** [www.hobartuk.com](http://www.hobartuk.com)

**Twitter:** [@HobartUKWW](https://twitter.com/HobartUKWW)

**Contact details:** 0844 777 8888



### Stand 40: Scotmas Biosecurity Ltd

We understand healthcare. For more than 25 years, Scotmas have worked with Estates Management, Water Safety Groups and Authorising Engineers to design chlorine dioxide based water disinfection systems. Combine our generators and our remote monitoring to give a complete picture of what's happening where it matters in your water system. Scotmas tablet based cleaning and disinfection offers the opportunity to simplify cleaning protocols, remove potentially dangerous chemicals from the cleaning process, and reduce costs. All products are supplied with a suite of training materials, allowing switch from incumbent products with minimal interruption to workflow.

**Website:** [www.scotmas.com](http://www.scotmas.com)

**Twitter:** [twitter.com/scotmasgroup](https://twitter.com/scotmasgroup)

**Contact details:** Scotmas Group, Pinnaclehill Industrial Estate, Kelso, Scotland, TD5 8AU - 01573 226901

**Email:** [enquiries@scotmas.com](mailto:enquiries@scotmas.com)



## Stand 41: Bentley Systems

The BCDE common data environment (CDE) from Bentley Systems is powering NHSScotland's Digital Estate. BCDE provides intuitive, yet powerful data, document, and spatial information management in the cloud, for construction projects and built assets. BCDE helps you improve the management and control of digital information to drive bottom-line improvements, across every stage of a project and asset lifecycle. Well-managed information in a cloud-based common data environment enables project teams to collaborate and work more effectively, and for asset owners to access trusted data across their digital estate, enabling them to make more timely decisions.

**Website:** [www.bentley.com/software/bcde/](http://www.bentley.com/software/bcde/)

**Contact details:** Reading Bridge House, Napier Street, Reading, RG1 8LS

**Email:** [bcde@bentley.com](mailto:bcde@bentley.com)



## Stand 42: Robert Gordon University

With a heritage going back 250 years and awarded university status in 1992 Robert Gordon University (RGU) provides postgraduate courses leading to highly relevant awards and degrees, equipping learners with the skills to thrive throughout their careers. With a reputation for producing graduates highly sought after by employers, RGU celebrates a high quality student experience and is currently ranked in the top three universities in Scotland for student satisfaction (NSS 2021). Named 'Scottish University of the Year 2021' in The Times & Sunday Times Good University Guide, 2021 it is also one of the largest online learning providers in the UK.

**Website:** [www.rgu.ac.uk](http://www.rgu.ac.uk)

**Twitter:** [@RobertGordonUni](https://twitter.com/RobertGordonUni)

**Contact details:** School of Health Sciences, Ishbel Gordon Building, Robert Gordon University Aberdeen AB10 7QG.

**Telephone:** 01224 263250

## NHS Scotland Assure stand

The NHS Scotland Assure stand is located beside the Conference Registration desk.

**Website:** [nss.nhs.scot/browse/nhs-scotland-assure](https://nss.nhs.scot/browse/nhs-scotland-assure)

**Twitter:** [@NHSNSS](https://twitter.com/NHSNSS)

**Email:** [nss.NHSScotlandAssure@nhs.scot](mailto:nss.NHSScotlandAssure@nhs.scot)

# NHS Scotland Assure Services

## Overview of NHS Scotland Assure and all services

Launched in June 2021 to deliver a co-ordinated approach to improving quality and reducing risks for new builds and the existing NHSScotland estate.

### Our services support:

- minimising risk in our healthcare facilities
- protecting patients from risk of infection and
- improving outcomes for patients across Scotland

### The benefits of NHS Scotland Assure

- Increased patient safety
- Improved outcomes for patients and families across Scotland
- Stronger relationships with clinical teams
- Increase in public and professional confidence
- Cohesion between healthcare and construction teams
- Integrating sustainability throughout our services

### NHS Scotland Assure services

NHS Scotland Assure provides a range of services.

#### ARHAI Scotland

ARHAI Scotland aims to improve Scotland's health and wellbeing by reducing the burden of infection and antimicrobial resistance within Scottish care settings.

This service provides expert intelligence, support, advice, evidence based guidance, clinical assurance and clinical leadership to local and national government, health and care professionals, the public and other national bodies.

As the national organisation responsible for infection prevention and antimicrobial resistance, ARHAI Scotland will liaise with other UK countries and international counterparts in the delivery and development of these national priority programmes.

## Property and capital planning

Property and Capital Planning provides advice, assurance, design assessment, guidance, procurement, systems, national survey programmes, contract management, equipping management and more.

They provide these services across five main areas:

- capital projects
- architecture and design (including fire safety and structural engineering)
- digital estate and asset management
- Public Private Partnership advisory services, in partnership with the Scottish Futures Trust
- equipping services



## Facilities services

This service includes:

- providing technical expertise and advice for all areas of 'Soft FM' facilities services
- preparing national policy guidance and reporting systems for NHSScotland
- managing specific services for NHSScotland – the home oxygen service, mammography and medical physics services, decontamination services and the Incident Reporting and Investigation Centre (IRIC)
- managing the NSS Estates and Facilities Management portfolio



## Sustainability

There are two aspects to our sustainability service:

1. NHSScotland – our support to Scottish Government and health boards. We provide advice, support, guidance and training, as well as a range of systems, to help boards meet their sustainability commitments and legal requirements.
2. NSS – like all health boards, we need to meet our sustainability commitments and legal requirements. We also have a key role to play, given our role as a national board providing enabling services for all of NHSScotland.

## Engineering and assurance

The engineering services supports health boards and external stakeholders by providing professional engineering advice and guidance in all aspects of the healthcare built environment. The guidance includes water, drainage, ventilation, medical gas and electrical services.

The assurance service monitors project assurance from health boards, supporting them to implement healthcare guidance. This service also supports health boards at key stages in the full lifecycle of a healthcare environment build.





## Research and innovation

Research helps to ensure NHS Scotland Assure guidance and advice is based not only on best practice but also on best evidence.

This service produces and commissions research to achieve a coordinated portfolio which supports the development of evidence-based guidance and advice, to deliver safe healthcare environments that are free from avoidable risk.

The service is also developing strong connections with built environment subject matter experts, healthcare providers, higher education and research institutions to facilitate collaboration, career development and knowledge sharing within the healthcare built environment research community.



## Workforce development

We provide an integrated approach to specialist workforce education for this multi-agency and multi-professional staff group, in partnership with NHS Education for Scotland and health boards.



## Knowledge management

We share research, intelligence and learning so information can reach staff in health boards who need it.

## NHS Scotland Assure case studies

Find out how NHS Scotland Assure brought a collaborative, multi-disciplinary approach to improving quality in the healthcare built environment by [taking a look at our case studies](#).

# Climate Change, Sustainability and Environmental Compliance team

## Summary of Service:

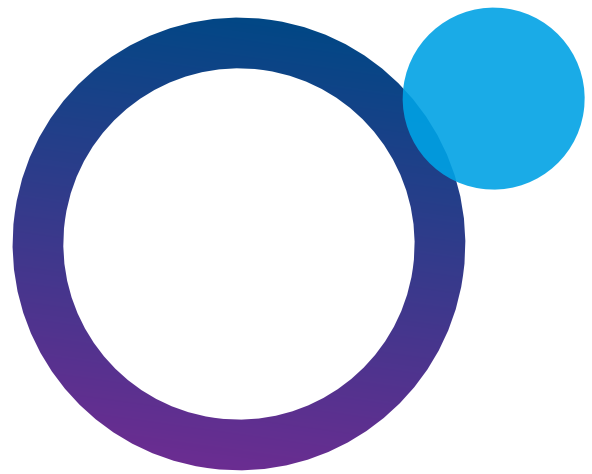
The service provides Scottish Government and Boards with information, guidance, training and advice on meeting national and international climate emergency and sustainability commitments and objectives and ensuring compliance with environmental legislation. The service also supports Health Boards to adopt and implement specific Scottish Government and NHSScotland policies, including:

- [DL \(2021\) 38 A Policy for NHSScotland on the Climate Emergency and Sustainable Development](#)
- NHSScotland Climate Emergency and Sustainability Strategy 2022 - 2026
- Public Bodies Climate Change Duties

## National Software Systems

The service supports a variety of national systems, specifically providing advice, guidance and training on use of systems, interrogation of data especially in relation to monitoring and reporting NHSScotland's performance and to underpin progress towards national targets and identification of any erroneous or gaps in data. These national systems include:

- e-Sight – is the national centralised energy and water management system which all Boards have access to. The system includes the monitoring and targeting of around 900 sites spread across 2,000 healthcare buildings to facilitate in providing detailed energy, emissions and cost analytics and reporting both nationally and at the Board level. The system has the capability to run detailed performance reports comparing one year against another, analysis to national benchmark standards, regression analysis of heating compared against degree days, electricity analysis against Maximum Demand thresholds, load profiles as well as analysis of a sites power factor. The system has a number of specifically designed bespoke reports, including a modelling tool on each Boards performance to the new 2040 Net-Zero target.
- Waste Data Reporting Tool – is the national centralised system to collate waste contractor collection and treatment data. It supports monitoring of waste arisings and recycling performance at site and health board level and is used for national reporting.
- NSAT – is the national excel based tool for use by Boards to benchmark sustainability performance across 16 areas of focus namely; governance and policy, awareness, nature and biodiversity, capital projects, communities, transport, environmental management, active travel, ethical issues, greenhouse gases, procurement and supply chain, sustainable care, greenspace, waste, welfare, adaptation. NSAT returns are submitted by Boards on an annual basis for verification and for national reporting.
- Climate Change Risk Assessment and Adaptation (CCRA) Planning Tool for Healthcare Assets – is an excel tool developed to assist Boards in completing a CCRA and Adaptation plan. Climate Change Risk Assessments and Adaptation Plans are submitted by Boards for analysis and for national reporting.
- Climate Hazards and Vulnerability Mapping Tool – is a web based GIS tool for use by Boards in assessing climate risks and vulnerabilities incorporating SEPA flood risk, UKCP18 and site data.



- Environmental Management System (EMS) – platform for each Board to collect and monitor key corporate environmental health and safety quantitative and qualitative data, satisfy Environmental Management Systems (EMS) ISO14001 requirements, and manage corporate risk, including compliance with environmental legislative requirements.
- Sustainability Action branding and website – branding developed in collaboration with Health Board sustainability leads and comms teams to support national and local campaign initiatives. The branding toolkit is available for Boards to download from the [Sustainability Action Website](#) (login required with NHS e-mail address).

## Reporting

Data from national systems is used for a variety of reporting streams. At a local level, Boards Public Bodies Climate Change Duties reports and sustainability reports are informed by these data sets. At a national level Scottish Governments Annual Environment Report for NHSScotland relies heavily on the accuracy of data from both e-Sight and the Waste Data Tool as well as other relevant data sources. The service plays an integral part in providing data for Boards and assisting Boards to cleanse their data and rectify any erroneous / outdated / gaps in data.

## Guidance

The service is responsible for producing specific guidance in relation to reporting requirements and national systems i.e. NHSScotland Guidance on Public Bodies Climate Change Duties reporting and Guidance on Climate Change Risk Assessment and Adaptation Planning. The service also supports the development of specific guidance on key topic areas, i.e. Guidance on EV and electric charging infrastructure and SHTN 02-01 Sustainable Design and Construction (SDaC) Guide.

## User Groups

As part of support to Boards, the service facilitates User Groups which bring Boards together to share best practice, lessons learned, discuss any changes / improvements to systems and develop specific guidance / templates. There is currently a user group in place for implementation of the NHSScotland Environmental Management System (EMS).

## Supporting Advisory Groups

The service also supports various NHS Scotland Assure Advisory Groups and sub-groups, including:

- Strategic Facilities Group (SFG)
- National Environmental Sustainability Group (NESG)
- National Energy Forum (NEF)
- Waste Management Steering Group (WMSG)
- National Transport, Fleet and Travel Planning Group (NTFTPG)
- Workstream specific Short Life Working Groups

## Scottish Government Support

The service provides advice and information on data and outputs from national systems along with reporting capabilities of these systems. The service also provides input to and advice on policy and strategy development and works closely with the Health Infrastructure Division to support the development, coordination and implementation of the NHSScotland Climate Emergency and Sustainability Strategy and associated national workstreams.

## The NHS Scotland Assure Information Management System (AIMS)

Digital



Physical



NHS Scotland Assure's Digital Estate and Asset Management Team have rolled out a digital estate tool for the whole of NHS Scotland.

### The NHS Scotland Assure Information Management System

**(AIMS)** is a digital repository for NHS health boards' physical buildings making it easy for boards to search, retrieve and make sense of their built environment information. This information can include a variety of files such as manuals, warranties, CAD drawings, and will show backlog maintenance data for a building such as a hospital or General Practitioner (GP) practice.

At critical times, this dynamic single source of data gives fast access to relevant and reliable information. This will save time, be cost effective and efficient and can offer assurance at all stages of a building's lifecycle.

**Conference session: Friday 4 November 1020 – 1100hrs**

### Background:

Following building failures such as falling masonry at Oxbang's primary school and the Grenfell Tower Fire, an independent review of building regulations and fire safety was published. It found that processes that drive compliance with building safety requirements as weak and complex with poor record keeping and change control.

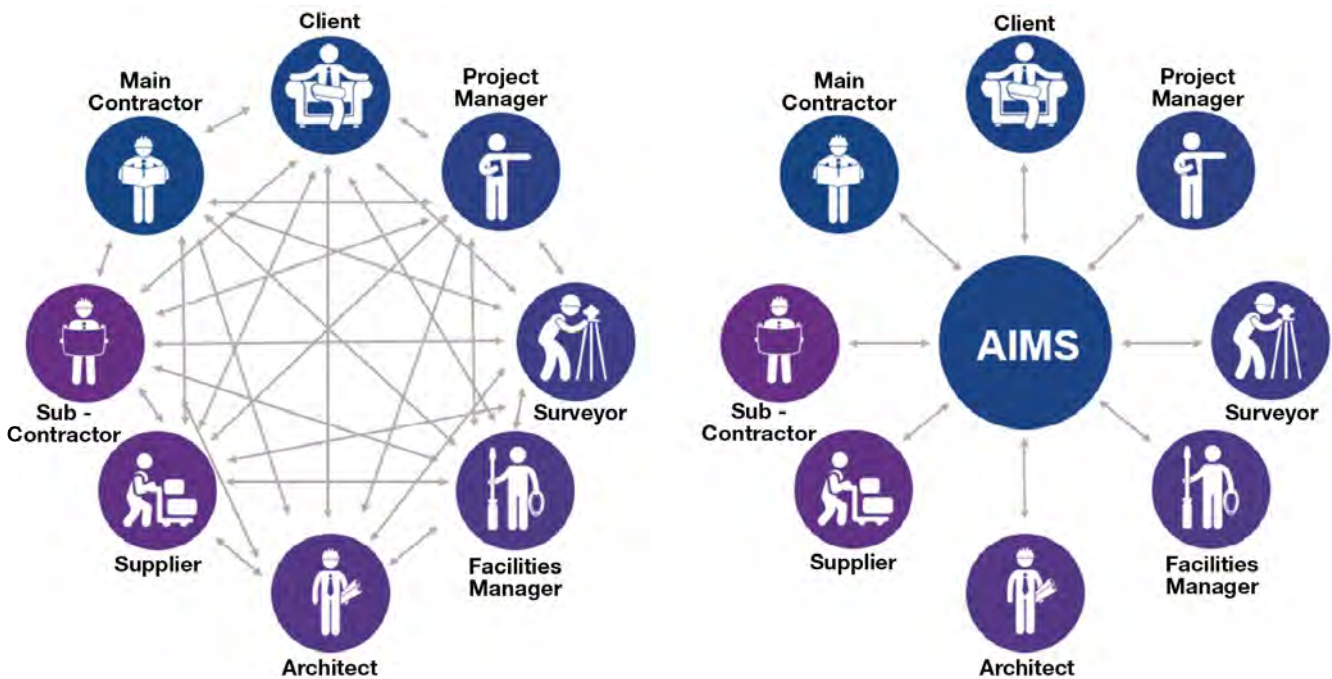
The report recommends the creation of a golden thread of information so that building owners receive the information they need and that there is a clear link between the design construction, occupation and maintenance. The crucial purpose of this golden thread is to safeguard the availability, completeness and correct record of a facility's construction and its regulatory compliance.

NHS Scotland's new AIMS is a direct response to the recommendations, intended to raise information management standards across the healthcare estate. It also plays a pivotal role in realising the recommendations of the Queen Elizabeth University Hospital independent inquiry in relation to information management.

Before the implementation of AIMS, there was no single centralised source of truth for built environment available to all boards as a national system. Data and information was available often on many different devices such as CDs or shared drives or only available as hard copies. With no indexing in place, it was hard to find specific data and information when needed.

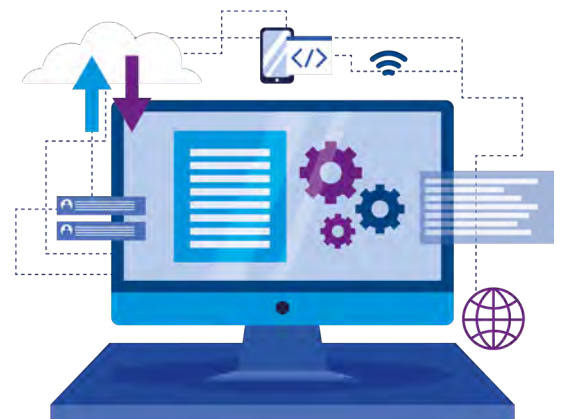


Sharing data and information during projects can often be complex and difficult to manage when defined workflows are not in place:



The AIMS system provides a collaborative digital environment in which to share information using defined workflows, with a full audit trail throughout the project lifecycle.

Trigger events such as falling masonry at Oxfangs Primary School is an example of the requirement to have retrievable, searchable information. NHS Scotland were asked to confirm the presence of wall ties in our buildings across the estate which were constructed within a specified time period. This information wasn't always readily available with boards requiring to carry out intrusive surveys involving a surveyor cutting into walls to determine if wall ties are present. This exercise took time, money and resource that could have been avoided.



At NHS Scotland Assure we recognise the built-environment as an information-based industry. Better decisions, based on reliable information leads to better service provision.

Collaboration was essential to implement the programme. NSS teams including Facilities Management, Digital and Security, National Procurement, ARHAI worked with us to scope the system's technical capabilities and ensure it fulfilled NHS Scotland's needs. The Centre for the Protection of National Infrastructure (CPNI) gave advice on the security requirements of the system to ensure a security minded approach was adopted. We worked closely with boards to help roll out the system and support when needed. This included:

- assisting with the identification of pilot projects, uploading documents, creating Blocks/Sites/Projects in AIMS
- undergoing a 'train-the-trainer' course with the system provider so the team could facilitate specific learning sessions for boards
- creating content in an "AIMS Implementation & Support" Teams Channel which gives boards various support materials such as user guides, implementation strategies and demonstration videos
- communicating regularly with stakeholders through AIMS Steering Groups, Working Groups and now User Groups. We also continue to engage with a wider stakeholder group through regular newsletters.

The benefit to health boards includes:

- reducing the time and effort required to check, version and reissue information
- saves time to transfer accurate and complete information from construction to operational stages
- provides a full audit trail of documents and drawings and can store information on authorisations, change controls etc
- easy access to relevant and reliable information in the event of failure or trigger event with using simple key word searches
- built in CAD viewer with functionality to overlay different versions of CAD drawings which highlight specific differences between versions
- ability to link with other national and local systems to pull across relevant built environment information into one environment which may include; data and information on backlog and condition of assets, statutory compliance information, infection control data and operational asset information.

Feedback has been positive, and boards can see the need for AIMS and the benefits that it can bring.

By rolling out AIMS\*, we're actioning the QEUH independent review recommendations about greater use of digital technologies to create, log and store project documentation. The project will help to improve compliance and assurance within the built environment, and through better information management, result in safer buildings.

## Statistics

To date we have engaged with **20 Health Boards** with **11 actively planning and implementing** the system within their board. Other boards are being encouraged to start their AIMS journey, with support from the team.

**Email** [NSS.DEandAMTeam@nhs.scot](mailto:NSS.DEandAMTeam@nhs.scot) for further information.

\* AIMS is a common data environment\*(CDE) which fulfils the requirements of Scottish Procurement Policy Notice (SPPN 01/2017) in relation to Building Information Modelling (BIM) projects and the requirement for a CDE, and ISO standards as a means for effective information management.

## FRAMEWORKS SCOTLAND<sup>3</sup>

EXCELLENCE IN HEALTHCARE CONSTRUCTION

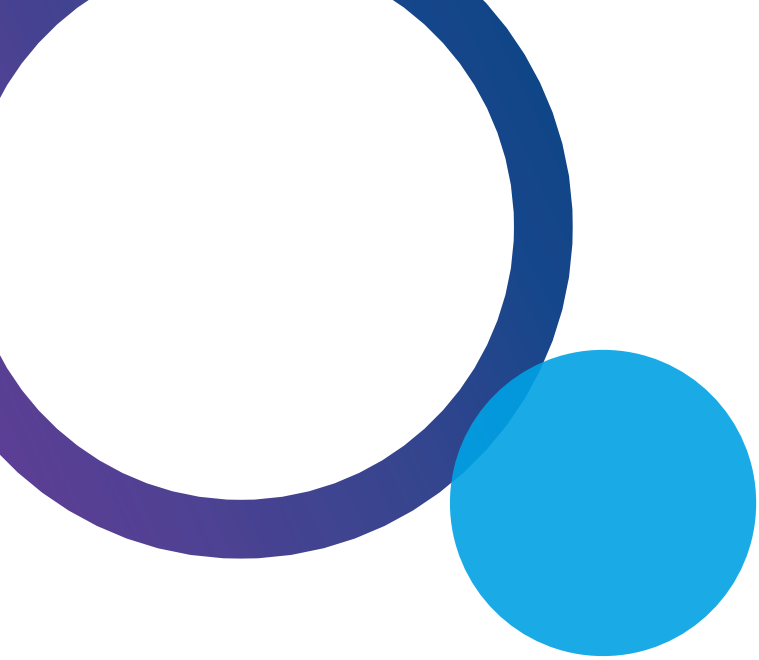
Frameworks Scotland 3 builds on the success of both Frameworks Scotland and Frameworks Scotland 2 which to date has seen **112 construction NHS facilities** of varying size and complexity completed with a combined value of circa circa **£755m delivered** and **circa £810m under construction or in development**, together with over **203 consultancy call offs**. The three largest projects procured to date being the Mathew Hay Building (£111m) in Grampian, Phase One of the Golden Jubilee Expansion Programme (Eye Centre) (£55m) and the Baird and ANCHOR - Aberdeen and North Centre for Haematology, Oncology and Radiotherapy - (£164m) in Grampian.

The Golden Jubilee (Phase 1 - Eye Centre) forms part of the ongoing National Treatment Centre (NTC) Programme which also includes Phase 2 – Surgical Centre, new treatment centres in Inverness, Perth, Livingston, Fife and Ayr; all of which are being delivered through Frameworks Scotland 2 and 3. Both the NHS Fife NTC together with the NTC in Highland form the second tranche of NTCs to open after the Golden Jubilee Phase 1 - Eye Centre, with the remaining NTCs coming on stream in a rolling ongoing programme.

Frameworks Scotland 3 launched in November 2020, continues to deliver major capital funded projects with a focus around the acute sector. This covers the full extent of projects including new build healthcare facilities, refurbishment, extension, programmes of backlog maintenance and demolition in respect of health, social care and other associated facilities.



- **2008** Frameworks Scotland commenced  
**FRAMEWORKS SCOTLAND**  
EXCELLENCE IN HEALTHCARE CONSTRUCTION
- **2009:** First Framework Scotland project call off
- **2009:** First Frameworks Scotland project complete
- **2010:** NHS Western Isles  
Western Isles Dental Centre complete
- **2011:** NHS Highland  
Migdale Hospital complete
- **2012:** NHS Dumfries and Galloway  
Midpark Hospital complete
- **2013:** Frameworks Scotland 2 commenced  
**FRAMEWORKS SCOTLAND<sup>2</sup>**  
EXCELLENCE IN HEALTHCARE CONSTRUCTION
- **2013:** Cost Advisor, CDM Advisor, Healthcare Planner, Lead Advisor, Project Manager, Supervisor Consultancy Frameworks (2013) commenced
- **2013:** First Framework Scotland 2 project call off



The launch of Frameworks Scotland 3 saw Balfour Beatty, GRAHAM, Kier and RMF Health joined as Principal Supply Chain Partners (PSCPs) by McLaughlin and Harvey and BAM as reserve PSCP. The introduction of the reserve PSCP gives resilience where two (2) or more PSCPs de-select themselves from a call-off process.

Frameworks Scotland 3 continues to be the preferred procurement method for acute sector projects amongst NHSScotland Boards and special Health Boards across Scotland and continues to deliver improved healthcare facilities for patients, NHSScotland and healthcare providers with projects including programmes of work for NHS Ayrshire and Arran, NHS Grampian, NHS Highland and NHS Lanarkshire and the new Ayrshire Hospice in development.

Frameworks Scotland 3 is structured to provide a “one stop shop” for project delivery using a develop and construct contract arrangement with each PSCP bringing their own extensive supply chain of designers, specialist consultants and sub-contractors. Contracts can be entered into at the earliest stages of design through to Full Business Case (FBC) stage. The contract is entered into on a staged basis, with stages aligned to the Scottish Capital Investment Manual (SCIM) Business Case stages.

Frameworks Scotland 3 provides NHS clients or permitted organisations with the ability to readily appoint pre-evaluated PSCPs alongside a pre-agreed commercial arrangement. It enables the team to immediately focus on taking the project forward rather than being involved in a protracted advertisement, selection and appointment process.



**2013:** NHS Greater Glasgow and Clyde  
Vale Centre For Health And Care complete



**2014:** NHS Greater Glasgow and Clyde  
Possilpark Health and Care Centre complete



**2015:** First Frameworks Scotland 2 project complete



**2015:** NHS Lanarkshire  
The Lanarkshire Beatson complete



**2016:** NHS Fife  
Stratheden Mental Health Unit complete



**2017:** NHS Grampian  
Lady Helen Parking Centre complete



**2017:** CDM Advisor Consultancy Framework Launched



**2018:** Consultancy Frameworks (2018) commenced



**2019:** Supervisor Consultancy Framework commenced



**2020:** NHS Louisa Jordan Opens



**2020:** Frameworks Scotland 3 commenced

**FRAMEWORKS SCOTLAND 3**  
EXCELLENCE IN HEALTHCARE CONSTRUCTION



In addition to the PSCP framework, Consultant Frameworks are established for:

- CDM / Construction Health and Safety Advisor
- Cost Advisor
- Healthcare Planner (Lot 1)
- Healthcare Planner (Lot 2)
- Lead Advisor
- Project Manager
- Supervisor (including Clerk of Works)

Using the standard Frameworks Scotland 3 / Consultant mini – competition procedure, NHS clients or permitted organisations can appoint any one of the PSCP / consultants within as little a timeframe of five weeks from the initial issue of the High Level Information Pack (HLIP).

Frameworks Scotland 3 offers the rapid mobilisation of projects with extensive supply chains who have excellent NHS experience. It provides joint incentives, long-term collaborative relationships and performance and affords NHS clients or permitted organisations more certainty of Time, Cost and Quality than other traditional procurement routes.

In addition to work relating to projects to be delivered under the Frameworks Scotland 3 framework, consultants are available for a range of construction and estates related services delivered in respect of health, social care and other facilities.

Procurement of new CDM / Construction Health and Safety Advisor, Cost Advisor Lead Advisor and Project Manager frameworks are currently underway, with these new consultancy frameworks programmed to be in place in 2023.



**2020:** NHS National Waiting Times Centre Golden Jubilee Phase 1 - Eye Centre complete

- **2021:** First Frameworks Scotland 3 call off
- **2021:** Healthcare Planner Framework (Lot 1 and Lot 2) commenced
- **2022:** National Treatment Centre - Fife due to complete
- **2022:** National Treatment Centre - Highland due to complete





# Healthcare Planner Consultancy Framework

Healthcare Planners can support NHS clients or permitted organisations / other users to develop strategies and projects, helping focus on opportunities to improve the patient experience. There are two separate framework lots available: focusing on strategic / system wide planning and on individual projects respectively. Early engagement in service redesign can maximise benefits to NHS clients or permitted organisations and service users.

## Lot 1: Strategic / Whole System Healthcare Planning

Lot 1 provides services on an Estate Wide; Territorial NHSScotland Board Wide; Regional and National basis. Client bodies can also work together for strategic purposes. Lot 1 healthcare planners can also support organisational development and change management to encourage innovation and creativity. The Strategic / Whole System approach is typically prior to developing or commencing individual projects.

- Whole system strategic planning, optimising improvement to the patient experience
- National, Regional Clinical Strategy development, service and capacity planning
- Global perspective of emerging healthcare trends, service planning, equipment innovation, informing the planning of new models of care
- New, sustainable models of care; scenario planning including crises strategies
- Clinical modelling at National, Regional, NHSScotland Board, Integration Joint Board (IJB) level, Whole Hospital and Directorate levels, statistical analysis and best practice benchmarking
- Service delivery mapping nationally to assist the identification of service gaps at all levels of healthcare provision and support services
- Analysis of population and demographic issues, with focus on deprivation, disease incidence and forward projections. Demographic and Service trend analysis
- Development and evaluation of service options
- Activity modelling; capacity and financial modelling; demand / capacity scenarios
- Health planning, service design, including evidence based best practice.



## Lot 2: Project / Activity Healthcare Planning

Lot 2 supports the initiation of individual projects and programmes of work from Strategic Assessment and early project initiation onwards. As there can be requirements for healthcare planning prior to specific projects being initiated, call off is not necessarily linked to the call off of other parties. As a project develops, the healthcare planner can also perform a role within the broader team.

- Business Case support and development of brief
- Clinical specifications, care models for whole hospital facilities, clinical departments, clinical and support services and facilities management (FM); Schedules of Accommodation
- Estate analysis including review of data; functional Suitability and Space Utilisation
- Adjacency, relationship and flow diagrams supporting service option appraisal
- Facilitate planned clinical process workshops; fit for purpose affordable output specifications
- Support clinical ownership of care models and clinical stakeholder engagement
- Support Healthcare Associated Infection – System for Controlling Risk in the Built Environment (HAI Scribe); Infection control advice for design and specification
- Detailed clinical brief documents, output specifications (and Clinical Design Statements)
- Room adjacency layouts; Room Data Sheets, equipment scheduling
- Room layouts – including standard rooms development; challenge room size, functionality and circulation requirements to improve flexibility
- Commissioning – services and facilities
- Post Occupancy Evaluation



# Framework Management

Health Facilities Scotland (HFS), part of NHS Scotland Assure, is the Framework Manager responsible for the management of Frameworks Scotland 3 and associated consultancy frameworks, in association with NHSScotland Boards and the Scottish Government Health and Social Care Directorate.

## HFS provides the following support:

- impartial project advice from dedicated Capital Projects Advisors
- guidance and support to Boards in the appointment of Delivery Teams from the frameworks and throughout the life of the project
- overall management of the Frameworks Scotland 2 & 3 PSCP frameworks and the six Consultant frameworks
- facilitate delivery of consistent approach and best practice across Capital Projects
- technical advice on scheme contracts, NEC3 / NEC4 and all aspects of the frameworks and project delivery generally
- performance management of the PSCPs and consultants
- guidance tools



## Role of the HFS Capital Projects Advisor

The Capital Projects Advisor provides a source of guidance to the NHS client or permitted organisations throughout the process. As a member of the Capital Projects Team they assist the client in establishing the most appropriate application of both consultant and PSCP input.

As overall Frameworks Manager, HFS should be consulted at the earliest stages of project planning to ensure that Capital Projects Advisors can assist in the development of a robust strategy which is informed by the views of both the NHS client or permitted organisation and the Capital Projects Team. The Capital Projects Advisors will also be able to feedback at relevant PSCP and consultants' performance reviews.

Each project will be allocated a dedicated Capital Projects Advisor.





## Range of services under Frameworks Scotland 3

Frameworks Scotland 3 is not just a construction solution. A key benefit is the diverse range of management and construction services it offers.

Frameworks Scotland 3 covers the whole of Scotland and is based on a single point delivery PSCP model, offering a 'one-stop-shop' for the delivery of design, development and construction on projects via an integrated supply chain. PSCPs have already developed long-term working relationships with their supply chains and will continue these relationships over the period of the Framework Agreement.

The principal focus of the work under Frameworks Scotland 3 is around the acute sector and includes both refurbishment and new build work together with programmes of backlog maintenance, statutory compliance, business continuity-related works and risk reduction work.

A PSCP may be engaged to undertake a variety of duties including service strategies, estate strategies, business planning, developing the brief, design development and construction works. In addition to the construction phase of a project, a PSCP can be appointed at various stages in the capital project planning process from the Initial Agreement stage, Outline Business Case (OBC) stage or at the Full Business Case (FBC) stage.

The framework is structured to achieve the following key benefits: earlier and faster delivery of projects; certainty of time, cost and quality; value for money; client satisfaction and well-designed buildings procured within a positive partnering environment.



# The National Treatment Centres Programme 2022

Originally named the National Elective Centre Programme when it was launched in October 2015, the programme was renamed in May 2021 to become the National Treatment Centres (NTC) Programme.

Both Frameworks Scotland 2 and Frameworks Scotland 3, together with NHSScotland consultant frameworks are being used in supporting all aspects of the delivery of the NTC Programme. Principal Supply Chain Partners (PSCPs) are appointed to the Golden Jubilee Expansion Programme, NTC Highland, NTC Fife, NTC Tayside and NTC Ayrshire and Arran, NTC Grampian and NHS Lothians NTC and Eye Centre.

Initially planned as five regional centres composed of either new or extended facilities based within NHS Grampian, NHS Highland, NHS Lothian, NHS Tayside and with a two-phase expansion at the NHS Golden Jubilee National Hospital in Clydebank, the programme has developed to include proposed centres in NHS Fife, NHS Ayrshire and Arran, NHS Forth Valley\*, NHS Lanarkshire and the NHS Lothian Eye Centre replacement.

The NTC Programme will provide the required additional elective capacity necessary to meet the anticipated increased demand due to demographic and waiting times pressures which have been further exacerbated by the COVID-19 pandemic.

The first of the new facilities was opened at NHS Golden Jubilee (Phase 1 - Eye Centre) in November 2020. The Centres in NHS Fife, NHS Highland, NHS Forth Valley\* and Golden Jubilees (Phase 2 – Surgical Centre) are under construction and will be complete in 2023 whilst the remaining centres are at various stages of development.

The new facilities will offer state-of-the-art care to patients requiring elective surgery by offering improved services and facilities and help to reduce patient waiting times and support the recovery, enhancement and sustainability of planned patient care. By focussing on a healthy culture; a healthy engaged workforce and healthy conditions / environment.

The Capital Projects Team are supporting the NTC Programme Projects, together with Scottish Government, to support dialogue between NHSScotland Boards and encourage collaboration, sharing of information and learning experiences and to replicate where appropriate best practice design elements and processes including repeatable layouts and rooms.

The NTCs will be designed and built to the most current construction standards and regulations with the overall NTC Programme envisaged boosting local economies by creating jobs and providing additional learning opportunities together with a range of other local community benefits.

\*Build not being delivered via through Frameworks Scotland



**Project: Ayrshire Hospice Capital Build**  
**Client: The Ayrshire Hospice**  
**PSCP: McLaughlin & Harvey**  
**Value: £13m**

The existing Ayrshire Hospice premises at 35 & 37 Racecourse Road, Ayr include a number of listed building elements and sits within a conservation area. The entire site therefore requires a sympathetic design solution which includes new build elements, refurbishment and extensive landscaping works.

The works include partial demolition and construction of significant new extensions forming a new build In-Patient Unit (IPU) and a modern Hub building providing connectivity through the 'heart of the Hospice'. Built to the highest quality and with sustainability to the forefront, this project will facilitate a 21st century site infrastructure and support the delivery of exceptional specialist palliative care services.

The site has been vacated thereby enabling the demolition and new construction works to progress without any adverse impact on any Hospice patients, carers or staff.



The design intent is to provide a seamless connection between the interior and exterior. Each patient bedroom opens out onto a private, covered patio and then onto the pathways which meander through a therapeutic garden environment. The IPU extension bends towards the south-east in order to maximise the number of rooms on the south elevation, and which also allows for a larger, private patient garden space to the north-east.

The Hub, located at the main entrance, functions as the central point of the hospice hosting public, user friendly functional areas. These include; the entrance lobby and reception, a small Hospice shop, a cafe with public access, digital learning suite and a large flexible area that can be adapted into a boardroom or a celebration space. This latter space can accommodate up to 50 people.

The main works phase is scheduled to begin in early 2023 with a re-opening of the facility currently scheduled for Summer 2024.

**Project: Western General Hospital  
Programme of Works**  
**Client: NHS Lothian**  
**PSCP: RMF Health**  
**Value: £48 million approx.**



RMF Health – a joint venture between Robertson Construction and FES – has completed an extensive programme of works at the Western General Hospital in Edinburgh.

This wide-ranging, collaborative project has been delivered in partnership with NHS Lothian clinical stakeholders, Edinburgh & Lothians Health Foundation and Frameworks Scotland 3. The new facilities follow health design best practice and will meet the needs of patients and staff for the next 10 years and beyond.

### **Haematology**

Refurbishments to haematology services have created a modern, integrated facility that co-locates inpatient and outpatient workstreams, previously separated between buildings. There are now 19 single-bed en-suite rooms and 30 outpatient chairs.

### **Renal**

Completing a new build renal unit has replaced a smaller 30-year-old facility, now providing 12 dialysis stations offering treatment for up to 72 patients per week.

### **Oncology**

A new build linear accelerator (LINAC) facility along with a series of oncology refurbishments, retain capacity for cancer treatment at the Western General until a new purpose-built Edinburgh Cancer Centre is delivered.

### **Infrastructure**

A new district heating network and energy centre, along with upgrades to electrical distribution systems have paved the way for these projects. A second phase of energy infrastructure improvements will be completed in 2023.

### **Highest safety and quality standards**

The works have been delivered safely within live environments, usually with busy wards below or adjacent. RMF Health handed over facilities with minimal disruption to NHS Lothian services after rigorous logistics and planning, and a dedicated focus on cleanliness and the health and safety of patients and staff.

### **Delivering added value for the NHS**

22 members of the team did a virtual 'Kiltwalk' in 2022, walking 27.4 miles each, and raising £15,000 for the NHS Foundation.

“Through our official charity, Edinburgh and Lothians Health Foundation, supporters like RMF Health help us to do more, creating first class facilities that help transform the way that care is delivered. We look forward to continuing these important partnerships to build the future of healthcare at the Western General together.”

– **Chris Stirling, Site Director, Western General Hospital**







**Project: Various: Ninewells Hospital**  
**Client: NHS Tayside**  
**PSCP: Balfour Beatty**  
**Value: £33 million approx.**

**Balfour Beatty are working with NHS Tayside to deliver improvements to Ninewells Hospital facilities, enhancing the quality of health care available for the communities of Tayside and Fife.**

Through Frameworks Scotland 2, Balfour Beatty were awarded the contract to deliver a number of capital projects at the existing Ninewells Hospital site – the Neonatal Intensive Care Unit, the Children’s Theatre project and the Electrical Infrastructure project upgrade.

Working in a live hospital environment requires meticulous planning to ensure hospitals can continue to provide high levels of patient care at all times. To help mitigate risks of disruption, Balfour Beatty used BIM 360 Field throughout the construction process increasing collaboration, improving safety, and streamlining the design and operations processes.

The new Children’s Theatre Suite is an innovative facility designed to put the needs of the children first, allowing them to be treated in a vibrant, welcoming and child-friendly environment. Balfour Beatty’s scope of works included:

- Demolition of an existing single storey seminar room structure
- The construction of a new four storey steel, composite floor and clad plant room
- Extensive stripping of the former laboratory areas to level 4 area of the Polyclinic section
- Re-design of below ground drainage, new metal stud partitions, door sets including screens and ironmongery, suspended and fixed ceilings, bedhead units and decoration.
- All the mechanical, electrical and plumbing services



As part of the £5.4m refurbishment of the Neonatal Intensive Care Unit, Balfour Beatty reconfigured the layout of the ward to enhance the delivery of the specialist services and improving the new-born and children's care facilities by maximising space. Our scope of works involved:

- The strip out and part demolition of the existing new-born baby care unit located on Level 6 of Polyclinic section
- Installation of over 12,000 metres of cabling and the mechanical, electrical and plumbing services
- Replace a section of the existing circa 50-year-old roof.
- Removal of existing suspended wire lath ceilings, fixtures, fittings, floor coverings, and door sets and screens
- Specialised and domestic mechanical, electrical and plumbing services

The Electrical Infrastructure project upgrade requires a phased approach to enhance the electrical resilience to an aging hospital. Over multiple phases, Balfour Beatty will upgrade the existing electrical infrastructure to meet current demands and future proof the Ninewells estate. Phase 1 of the anticipated 11 has been completed with phase 2 currently underway. Completion of phase 1 ensured that the electrical demand for the other capital projects was provided at the necessary key stages.



**FRAMEWORKS SCOTLAND**  
EXCELLENCE IN HEALTHCARE CONSTRUCTION



## NHSScotland Assure Equipping Services

### Excellence in Healthcare Equipping

The NHSScotland Assure Equipping Services team offers an extensive range of services, from the acquisition of single pieces of high value and technically complex equipment to complete equipping of major healthcare developments. We offer a comprehensive flexible service to meet particular needs.

With expertise of managing healthcare facility projects of all sizes throughout Scotland, the UK and overseas, the team have a proven track record of delivering healthcare projects on time and within budget.

Our experience in the public sector spans Non Profit Distributing (NPD), HUB, Private Finance Initiative (PFI), Frameworks Scotland and traditionally funded capital projects, and we've been successfully completing projects for the private and charitable sectors for more than 30 years.

Our team has a wide range of expertise and our support and impartial advice is totally independent. No matter how many people are working for you behind the scenes, you always have a single point of contact within the Equipping Services Team.



## Summary of existing services



Full project management service and design advice



Equipment scheduling



Design of specialist departments



Technical advice and support to Scottish Government and NHS Boards



Product specialist input  
(e.g. Electromedical, Labs, Dental, Pharmacy, Diagnostic Imaging, Decontamination)



Specifications for all equipment associated with healthcare facilities



Procurement / acquisition



Options appraisal



Logistics management



Assessment of existing equipment



Life cycle costing



Equipment commissioning



Advice on safety and performance standards



Project and financial management from planning to completion



On site and post commissioning support

## Projects

### NHS Lothian Royal Hospital for Children and Young People & Dept of Clinical Neuroscience

The Equipping Services Team provided input to room layouts and specifications and were responsible for all equipment required for the new hospital.

The procurement included 23,000 items of equipment ranging from sack holders to an Intra-operative MRI Scanner and Robotic Neurosurgery Operating Microscope, and the major imaging equipment was acquired through a collaborative procurement with two other Health Boards to deliver further savings.

Other examples of new equipment include 2365 items of clinical furniture and trolleys, 4826 pieces of furniture for staff, offices and visitors and 1728 items of Electromedical, Imaging and Therapies equipment

The Equipping team provided a full Logistics service managing processes including:

- timetabling the deliveries onto site in a timely and safe manner
- taking receipt of equipment
- managing suppliers installing equipment
- checks for damage
- checking equipment labelling
- checking conformity to specification
- dealing with supplier issues
- ensuring the equipment is placed in the correct location



### Badenoch & Strathspey Community Hospital

The £20M Badenoch & Strathspey Community Hospital in Aviemore opened to patients in September 2021.

The new hospital provides services for the local community including 24 Inpatient beds, 12 Consulting/Treatment rooms, a Minor Injuries/ Out of Hours unit, Dental and X-ray facilities, and a GP Surgery. The hospital also provides a base for Community Teams and the Scottish Ambulance Service.

The Equipping Services team supported NHS Highland with equipment programme management, drawing reviews, equipment specifications, procurement, and on-site logistics.

Equipping Services were involved with all equipment in this project from the x-ray to the fit out of the open plan office and liaised with a variety of stakeholders to ensure the project's success.

Of the team's involvement, the NHS Highland Clinical Advisor commented: "The NHS Scotland Assure Equipping team advice was excellent and led to better outcomes for our patients and teams."

### Contact Details

Need help with your project? Contact our Equipping Services team on:

[nss.hfsenquiries@nhs.scot](mailto:nss.hfsenquiries@nhs.scot) or **0131 275 6000**

## Our History

The Aroma Coffee Bar concept was introduced in Glasgow in 2009 as part of a Health facilities Scotland initiative to provide improved retail services for patients, visitors and staff. As well as retaining, retraining and inspiring NHS staff through barista and customer care development with all profits directed back into frontline patient services. We now have a national brand which contributes millions back into patient care.



## Our Coffee

Aroma blends consist of 100% Arabica high-grade coffees from Brazil, Guatemala and Kenya. Consistently ensuring a delicious taste every cup.

## Our Food

Our unique bakery range was developed exclusively for Aroma and you will be delighted to know all the products meet Healthy Living standards.



## Our Mission

Aroma is proudly owned and operated by the NHS with all profits directed back into patient care.





**Find out more  
about NSS at:**

**[nss.nhs.scot](https://nss.nhs.scot)**

**[@NHSNSS](#)**

**Designed by  
NSS Creative  
Services**