

Hospital onset COVID-19 cases in Scotland

Week ending 1 March 2020 to week ending 4 July 2021

A management information publication for Scotland

Publication date: 28 July 2021

About this release

This release by ARHAI Scotland, part of NHS National Services Scotland, provides data for COVID-19 hospital onset cases in Scotland from week ending 1 March 2020 to week ending 4 July 2021. A system for monitoring COVID-19 is critical to tracking hospital transmission. This helps to inform infection prevention and control measures. The transmission of COVID-19 is thought to occur mainly through respiratory droplets generated by coughing and through contact with contaminated surfaces. Infections have been widely reported in the community. [Further information on the epidemiology of COVID-19 in healthcare settings can be found on the Public Health Scotland website.](#)

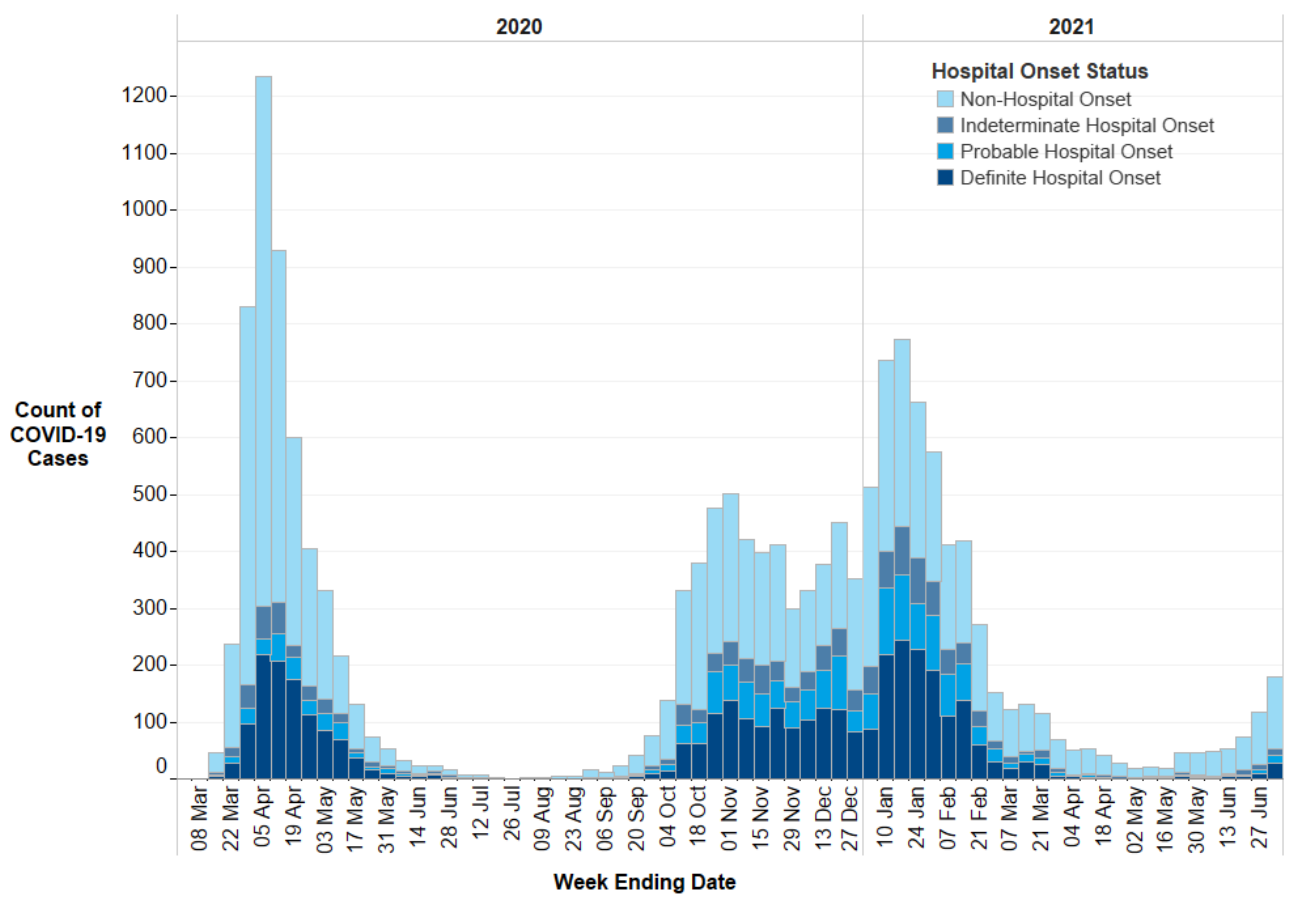
Main points

Breakdown of COVID-19 cases by hospital onset status – weekly data

The total number of COVID-19 cases reported to ARHAI Scotland this week (week ending 4 July 2021) was 23,228. Of these:

- 23,049 (99.2%) were reported as community onset (first positive specimen taken in the community). In the previous week (week ending 27 June 2021) there 19,500 (99.4%).
- 126 (0.5%) were reported as non-hospital onset (first positive specimen on day 1 or 2 of admission to NHS board). In the previous week (week ending 27 June 2021) there were 92 (0.5%).
- 11 (0.05%) were reported as indeterminate hospital onset (first positive specimen on days 3 to 7 of admission to NHS board). In the previous week (week ending 27 June 2021) there were 10 (0.1%).
- 14 (0.1%) were reported as probable hospital onset (first positive specimen on days 8 to 14 of admission to NHS board). In the previous week (week ending 27 June 2021) there was 6 (0.03%).
- 28 (0.1%) were reported as definite hospital onset (first positive specimen date was 15 or more days after admission to NHS board). In the previous week (week ending 27 June 2021) there were 9 (0.05%).

Epidemic curve of COVID-19 cases with first positive specimen taken during an inpatient stay, by onset status: week-ending 1 March 2020 to week-ending 4 July 2021 (n= 15,984).^{1,2}



1. Source of data is Electronic Communication of Surveillance in Scotland (ECOSS) data and Rapid Admission Preliminary Inpatient Data (RAPID) data or local admission data.
2. The community cases are not represented in this chart as first sample was not taken in hospital setting.

Background

Antimicrobial Resistance and Healthcare Associated Infection (ARHAI) Scotland, part of National Services Scotland, works closely with Public Health Scotland to deliver the COVID-19 response. Local and national monitoring in hospital settings is required to reduce COVID-19 infections.

Contact

Laura Imrie

Clinical Lead, Antimicrobial Resistance and Healthcare Associated Infections (ARHAI) Scotland
NHS National Services Scotland
0141 300 1922

nss.hpshaic@nhs.scot

Further Information

Find out more in the [full report](#) and on the [COVID-19](#) pages on the PHS website.

The next release of this publication will be 4 August 2021.