

Hospital onset COVID-19 cases in Scotland

Week ending 01 March 2020 to week ending 16 January 2022

A management information publication for Scotland

Publication date: 09 February 2022

About this release

This release provides data for COVID-19 hospital onset cases in Scotland from week ending 1 March 2020 to week ending 16 January 2022. A system for monitoring COVID-19 is critical to tracking hospital transmission. This helps to inform infection prevention and control measures. The transmission of COVID-19 is thought to occur mainly through respiratory droplets generated by coughing and through contact with contaminated surfaces. Infections have been widely reported in the community. [Further information on the epidemiology of COVID-19 in healthcare settings can be found on the Public Health Scotland website.](#)

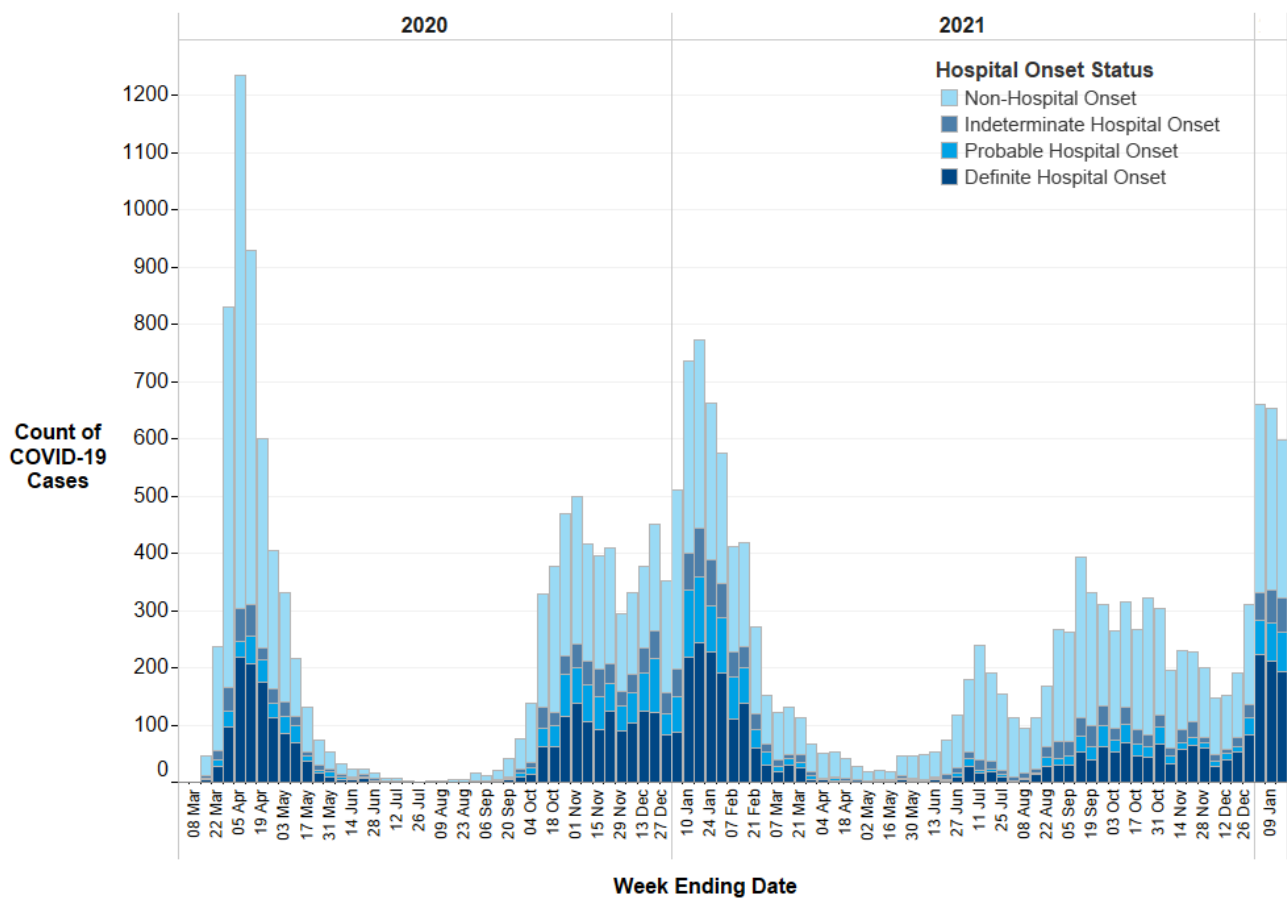
Main points

Breakdown of COVID-19 cases by hospital onset status – weekly data

The total number of COVID-19 cases reported to ARHAI Scotland this week (week ending 16 January 2022) was 47,577. Of these:

- 46,979 (98.7%) were reported as community onset (first positive specimen taken in the community). In the previous week (week ending 09 January 2022) there were 90,252 (99.3%).
- 275 (0.6%) were reported as non-hospital onset (first positive specimen on day 1 or 2 of admission to NHS board). In the previous week (week ending 09 January 2022) there were 318 (0.3%).
- 61 (0.1%) were reported as indeterminate hospital onset (first positive specimen on days 3 to 7 of admission to NHS board). In the previous week (week ending 09 January 2022) there were 57 (0.1%).
- 69 (0.1%) were reported as probable hospital onset (first positive specimen on days 8 to 14 of admission to NHS board). In the previous week (week ending 09 January 2022) there were 66 (0.1%).
- 193 (0.4%) were reported as definite hospital onset (first positive specimen date was 15 or more days after admission to NHS board). In the previous week (week ending 09 January 2022) there were 212 (0.2%).

Figure 1: Epidemic curve of COVID-19 cases with first positive specimen taken during an inpatient stay, by onset status: week-ending 01 March 2020 to week-ending 16 January 2022 (n=23,613).^{1,2,3}



1. Source of data are Corporate Data Warehouse (CDW) that contains test results from Electronic Communication of Surveillance in Scotland (ECOSS) and Rapid Admission Preliminary Inpatient Data (RAPID) or local admission data.
2. The community cases are not represented in this chart as first sample was not taken in hospital setting.
3. The final three columns in the graph refer to the first three week-endings of 2022.

Background

Antimicrobial Resistance and Healthcare Associated Infection (ARHAI) Scotland, part of National Services Scotland, works closely with Public Health Scotland to deliver the COVID-19 response. Local and national monitoring in hospital settings is required to reduce COVID-19 infections.

Contact

Laura Imrie
Clinical Lead

Shona Cairns
Consultant Healthcare Scientist

Antimicrobial Resistance and Healthcare Associated Infections (ARHAI) Scotland
NHS National Services Scotland
0141 300 1922

nss.hpshaic@nhs.scot

Further Information

Find out more in the [full report](#) and on the [COVID-19](#) pages on the PHS website. The next release of this publication will be 16 February 2022.