



# Discretionary fee guide 2022.

Fees effective from  
1 November 2022.

<b>Process to claim and submit discretionary zero value items .....</b>	<b>3</b>
Prior approval / discretionary fee request .....	3
Approval & Claim Process - Requesting Discretionary fee for item 39.....	4
eDental: Electronic claim submitted from PMS.....	5
eDental: Web form claim submitted for payment.....	5
<b>Discretionary Fee Guide 2022 .....</b>	<b>6</b>
Procedures to Assist Diagnosis and Treatment.....	6
Non-Surgical Periodontal Treatment.....	7
Permanent Fillings.....	8
Endodontic Treatment.....	11
Porcelain Veneers.....	12
Inlays and Crowns (Fee codes 1750, 1752 – 1753).....	13
Repair of a Crown .....	13
Inlays and Crowns (Fee codes 3809 – 3822, 3826 – 3830, 3838 – 3842, 3902 – 3908) .....	15
Provision of Bridges.....	19
Extractions of Special Difficulty and Other Oral surgery .....	23
Sedation.....	27
Prostheses, Obturators and other (Non-Orthodontic) Appliances .....	29
Repairs and Alterations to Dentures .....	30
Obturators, Splints and Similar Appliances other than Orthodontic Appliances .....	34
Repairs to Orthodontic Appliances .....	35
Orthodontic Incomplete Fees.....	37

\*(TBD) Fee code to be determined by PSD

<b>Orthodontic Discretionary Fees</b> .....	<b>37</b>
<b>Interim Payment</b> .....	<b>38</b>
<b>Interim Payment Recovery</b> .....	<b>39</b>
<b>Miscellaneous Treatments</b> .....	<b>39</b>
<b>Any other Treatment</b> .....	<b>40</b>
<b>Radiographic Examination and Radiological Report (Occasional Treatment)</b> .....	<b>43</b>
<b>Inlays, Crowns and Bridges (Occasional Treatment)</b> .....	<b>43</b>
<b>Repairs and Alterations to Dentures and other Appliances</b> .....	<b>44</b>
<b>Occasional Orthodontic Treatment</b> .....	<b>46</b>
<b>Any other Incomplete Treatment</b> .....	<b>48</b>

## **Process to claim and submit discretionary zero value items**

### **Prior approval / discretionary fee request**

All prior approval requests are submitted electronically.

The request process is detailed below:

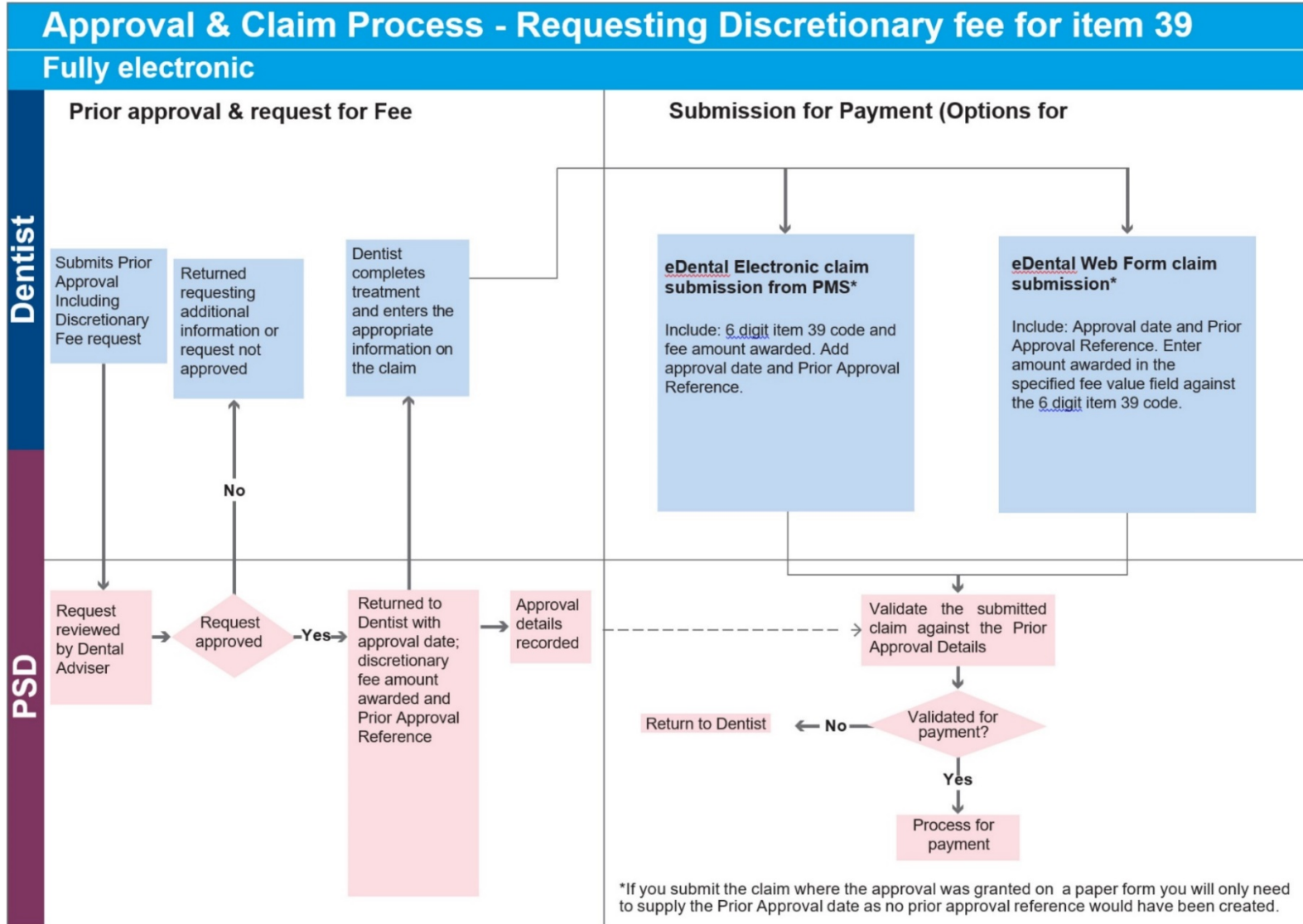
Submit the electronic prior approval request;

The request will be assessed by a Dental Adviser;

The request will be approved, or returned for more information, or may not be granted.

If approved, the approval date; Approval Reference and appropriate fee for the item 39 code will be provided. The submission will be returned electronically to the dentist

## Approval & Claim Process - Requesting Discretionary fee for item 39



\*(TBD) Fee code to be determined by PSD

## **eDental: Electronic claim submitted from PMS**

The claim must include the item 39 treatment code, the approval date; the Prior Approval Reference and the amount awarded detailed against the item 39 code.

The total fee being claimed should be amended in your system to include the fee awarded for the discretionary item.

The claim, once submitted, will be validated and where appropriate processed for payment.

## **eDental: Web form claim submitted for payment**

The claim must include the item 39 treatment code, the approval date; the Prior Approval Reference and the amount awarded detailed in the 'specified fee value' field on the Value Summary tab against the item 39 treatment code. The total fee being claimed will be amended to include the fee awarded for the discretionary item, when you select the refresh button.

The claim, once submitted, will be validated and where appropriate processed for payment.

## Discretionary Fee Guide 2022

### Procedures to Assist Diagnosis and Treatment

Fee Code	Fee Suffix	Item Description	Qualifier Min	Qualifier Max	Dentist Fee	Patient's Charge	Tooth Specific Item	Teeth	Prior Approval Required
0200	01	OPT Analysis <i>Should only be claimed where OPT has been taken at a different location. Same dentist rule applies.</i>	-	-	£7.90	£6.32	No	-	No
0221	01	Occlusal Analysis	-	-	£22.85	£18.28	No	-	No
0221	02	Adjustable Articulator <i>Mounting of study casts on an adjustable articulator where necessary in complex cases.</i>	-	-	£22.85	£18.28	No	-	No
3621	01	Occlusal Equilibration	-	-	£28.60	£22.88	No	-	Yes
3854	01	Anatomical articulation with Facebow transfer	-	-	£22.85	£18.28	No	-	Yes
3823	01	Provision of a "Lucia" jig	-	-	£32.50	£26.00	No	-	Yes
3831	-	Diagnostic wax-ups per tooth	01	32	£9.75	£7.80	Yes	All teeth	Yes

\*(TBD) Fee code to be determined by PSD

Fee Code	Fee Suffix	Item Description	Qualifier Min	Qualifier Max	Dentist Fee	Patient's Charge	Tooth Specific Item	Teeth	Prior Approval Required
3858	01	Provision of upper & lower study casts & articulation in cases of TMJ dysfunction	-	-	£45.50	£36.40	No	-	Yes
3859	01	Provision of a duplicate single study cast	-	-	£7.15	£5.72	No	-	Yes

### Non-Surgical Periodontal Treatment

Fee Code	Fee Suffix	Item Description	Qualifier Min	Qualifier Max	Dentist Fee	Patient's Charge	Tooth Specific Item	Teeth	Prior Approval Required
1041	05	Splinting of periodontally compromised teeth: (one union) <i>Dental Advisers would appreciate appropriate radiographs where available.</i>	-	-	£22.25	£17.80	No	-	Yes
1041	06	Splinting of periodontally compromised teeth: (two unions) <i>Dental Advisers would appreciate appropriate radiographs where available.</i>	-	-	£44.50	£35.60	No	-	Yes

\*(TBD) Fee code to be determined by PSD



Fee Code	Fee Suffix	Item Description	Qualifier Min	Qualifier Max	Dentist Fee	Patient's Charge	Tooth Specific Item	Teeth	Prior Approval Required
1041	07	Splinting of periodontally compromised teeth: (three unions) <i>Dental Advisers would appreciate appropriate radiographs where available.</i>	-	-	£66.75	£53.40	No	-	Yes
1041	08	Splinting of periodontally compromised teeth: (four or more unions) <i>Dental Advisers would appreciate appropriate radiographs where available.</i>	-	-	£89.00	£71.20	No	-	Yes
1192	01	Single Tooth Gingivectomy Other than treatment claimed under item 11(d).	-	-	£21.40	£17.12	Yes	All teeth	Yes

## Permanent Fillings

Fee Code	Fee Suffix	Item Description	Qualifier Min	Qualifier Max	Dentist Fee	Patient's Charge	Tooth Specific Item	Teeth	Prior Approval Required
1452	-	Removal of Amalgam & Replacing Resin Single Surface <i>Must be supported by appropriate consultant report.</i>	01	32	£20.60	£16.48	Yes	All teeth 14-18	Yes

\*(TBD) Fee code to be determined by PSD

Fee Code	Fee Suffix	Item Description	Qualifier Min	Qualifier Max	Dentist Fee	Patient's Charge	Tooth Specific Item	Teeth	Prior Approval Required
1453	-	Removal of Amalgam & Replacing Resin MO or DO <i>Must be supported by appropriate consultant report.</i>	01	20	£52.90	£42.32	Yes	24-28 34-38 44-48	Yes
1454	-	Removal of Amalgam & Replacing with Resin MOD <i>Must be supported by appropriate consultant report.</i>	01	20	£64.50	£51.60	Yes	14-18 24-28 34-38 44-48	Yes
3801	-	Stabilising of tooth with a non-amalgam filling (pregnant + breastfeeding mother) <i>Material not specified.</i>	01	20	£18.85	£15.08	Yes	14-18 24-28 34-38 44-48	Yes
3802	-	Addition of composite resin to teeth where an appropriate SDR fee is not available - no tooth preparation necessary <i>Normally used to treat non carious tooth surface loss.</i>	01	20	£14.25	£11.40	Yes	14-18 24-28 34-38 44-48	Yes

\*(TBD) Fee code to be determined by PSD

Fee Code	Fee Suffix	Item Description	Qualifier Min	Qualifier Max	Dentist Fee	Patient's Charge	Tooth Specific Item	Teeth	Prior Approval Required
3803	-	Addition of composite resin to teeth where an appropriate SDR fee is not available - tooth preparation necessary <i>Normally used to treat non carious tooth surface loss.</i>	01	20	£20.80	£16.64	Yes	14-18 24-28 34-38 44-48	Yes
3804	-	Addition of composite resin to teeth where an appropriate SDR fee is not available - composite build up <i>Normally used to treat non carious tooth surface loss.</i>	01	20	£43.15	£34.52	Yes	14-18 24-28 34-38 44-48	Yes
3805	-	Addition of composite resin to teeth where an appropriate SDR fee is not available - extensive restoration <i>Normally used to treat extensive non carious tooth surface loss.</i>	01	20	£64.50	£51.60	Yes	14-18 24-28 34-38 44-48	Yes
3823	01	Provision of a laboratory manufactured stent to be used in conjunction with composite build ups.	-	-	£32.50	£26.00	No	-	Yes
3849	-	Full coverage in cases of gross tissue loss/malformed incisors/peg shaped laterals with composite resin.	01	32	£43.15	£34.52	Yes	All teeth	Yes

\*(TBD) Fee code to be determined by PSD

Fee Code	Fee Suffix	Item Description	Qualifier Min	Qualifier Max	Dentist Fee	Patient's Charge	Tooth Specific Item	Teeth	Prior Approval Required
3850	-	Refacing of labial surfaces of a tooth in cases of hypoplasia etc.	01	20	£43.15	£34.52	Yes	11-15 21-25 31-35 41-45	Yes

## Endodontic Treatment

Fee Code	Fee Suffix	Item Description	Qualifier Min	Qualifier Max	Dentist Fee	Patient's Charge	Tooth Specific Item	Teeth	Prior Approval Required
1531	-	Apicectomy on an upper molar tooth, 1 palatal root only <i>No fee shall be payable unless appropriate radiographs are available.</i>	01	04	£127.70	£102.16	Yes	16-18 26-28	No
1534	-	Apicectomy on a lower molar tooth, 1 root <i>No fee shall be payable unless appropriate radiographs are available.</i>	01	02	£85.10	£68.08	Yes	36-38 46-48	No
3901	-	Apexification	01	12	*(TBD)	*(TBD)	Yes	11-13 21-23 31-33 41-43	Yes

\*(TBD) Fee code to be determined by PSD

## Porcelain Veneers

Fee Code	Fee Suffix	Item Description	Qualifier Min	Qualifier Max	Dentist Fee	Patient's Charge	Tooth Specific Item	Teeth	Prior Approval Required
3806	-	Indirect composite veneer (Laboratory fabricated)	01	20	£131.30	£105.04	Yes	11-15 21-25 31-35 41-45	Yes
3807	-	Porcelain veneers on teeth other than - upper 321/123 (first veneer in arch)	01	02	£141.50	£113.20	Yes	14-15 24-25 31-35 41-45	Yes
3808	-	Each subsequent veneer in arch (porcelain veneers on teeth other than - upper 321/123)	01	12	£131.30	£105.04	Yes	14-15 24-25 31-35 41-45	Yes
3844	-	Gold shims	01	32	£85.25	£68.20	Yes	All teeth	Yes
3845	-	Shims - precious metal alloy	01	32	£74.40	£59.52	Yes	All teeth	Yes
3846	-	Shims - NON precious metal alloy	01	32	£70.20	£56.16	Yes	All teeth	Yes

\*(TBD) Fee code to be determined by PSD

## Inlays and Crowns (Fee codes 1750, 1752 – 1753)

Fee Code	Fee Suffix	Item Description	Qualifier Min	Qualifier Max	Dentist Fee	Patient's Charge	Tooth Specific Item	Teeth	Prior Approval Required
1750	-	First or only crown in the same jaw	01	02	£10.15	£8.12	No	-	Yes
1752	-	Three quarter crown (non-precious metal)	01	20	£115.05	£92.04	Yes	14-18 24-28 34-38 44-48	Yes
1753	-	1 Crown (full or jacket crown stainless steel prefabricated)	01	12	£41.75	£33.40	Yes	16-18 26-28 36-38 46-48	Yes

## Repair of a Crown

Fee Code	Fee Suffix	Item Description	Qualifier Min	Qualifier Max	Dentist Fee	Patient's Charge	Tooth Specific Item	Teeth	Prior Approval Required
1770	-	First or only crown in the same jaw	01	02	£10.15	£8.12	No	-	No
1771	14	Repair to porcelain in situ using special repair kit One unit	-	-	£32.25	£25.80	No	-	No

\*(TBD) Fee code to be determined by PSD

Fee Code	Fee Suffix	Item Description	Qualifier Min	Qualifier Max	Dentist Fee	Patient's Charge	Tooth Specific Item	Teeth	Prior Approval Required
1771	15	Repair to porcelain in situ using special repair kit Two units	-	-	£48.50	£38.80	No	-	No
1771	16	Repair to porcelain in situ using special repair kit Max fee	-	-	£64.60	£51.68	No	-	No
1772	-	Removal of a crown (prior to repair) <i>Prior to repair, not replacement.</i>	01	32	£20.35	£16.28	Yes	All teeth	No
1773	-	Insertion of a pin/screw (F4) + recementing crown	01	32	£39.50	£31.60	Yes	All teeth	No
1774	-	Insertion of core & post prefabricated in non-precious metal (F3) + recementing crown	01	32	£58.70	£46.96	Yes	All teeth	No
1775	-	Insertion of a Kurer crown saver or cast metal post (F2) + recementing crown	01	32	£80.35	£64.28	Yes	All teeth	No
1776	-	Dentine bonded core on root treated molar teeth	01	12	£30.30	£24.24	Yes	16-18 26-28 36-38 46-48	No

\*(TBD) Fee code to be determined by PSD

## Inlays and Crowns (Fee codes 3809 – 3822, 3826 – 3830, 3838 – 3842, 3902 – 3908)

Fee Code	Fee Suffix	Item Description	Qualifier Min	Qualifier Max	Dentist Fee	Patient's Charge	Tooth Specific Item	Teeth	Prior Approval Required
3809	-	Precious bonded crown - metal/ceramic crown on a molar tooth (includes first crown in arch fee) Colour clinical photograph required to demonstrate a non retracted natural smile.	01	12	£173.20	£138.56	Yes	16-18 26-28 36-38 46-48	Yes
3810	-	Non-precious bonded crown - metal/ceramic crown on a molar tooth (includes first crown in arch fee) Colour clinical photograph required to demonstrate a non retracted natural smile.	01	12	£156.50	£125.20	Yes	16-18 26-28 36-38 46-48	Yes
3811	-	Laboratory constructed temporary crown Normally appropriate in staged treatment plans.	01	32	£33.60	£26.88	Yes	All teeth	Yes
3812	-	Inlays/pinlays - precious metal Single surface cavity	01	32	£74.40	£59.52	Yes	All teeth	Yes
3813	-	Inlays/pinlays - precious metal Compound cavity	01	32	£113.65	£90.92	Yes	All teeth	Yes

\*(TBD) Fee code to be determined by PSD



Fee Code	Fee Suffix	Item Description	Qualifier Min	Qualifier Max	Dentist Fee	Patient's Charge	Tooth Specific Item	Teeth	Prior Approval Required
3814	-	Inlays/pinlays - precious metal Confluent compound cavity	01	32	£137.00	£109.60	Yes	All teeth	Yes
3815	-	Inlays/pinlays - non precious metal Single surface cavity	01	32	£70.20	£56.16	Yes	All teeth	Yes
3816	-	Inlays/pinlays - non precious metal Compound cavity	01	32	£98.00	£78.40	Yes	All teeth	Yes
3817	-	Inlays/pinlays - non precious metal Confluent compound cavity	01	32	£121.20	£96.96	Yes	All teeth	Yes
3818	-	Porcelain inlays MO/DO	01	20	£111.95	£89.56	Yes	14-18 24-28 34-38 44-48	Yes
3819	-	Porcelain inlays MOD	01	20	£147.00	£117.60	Yes	14-18 24-28 34-38 44-48	Yes

\*(TBD) Fee code to be determined by PSD

Fee Code	Fee Suffix	Item Description	Qualifier Min	Qualifier Max	Dentist Fee	Patient's Charge	Tooth Specific Item	Teeth	Prior Approval Required
3820	-	Indirect composite inlay MO/DO	01	20	£109.30	£87.44	Yes	14-18 24-28 34-38 44-48	Yes
3821	-	Indirect composite inlay MOD	01	20	£131.25	£105.00	Yes	14-18 24-28 34-38 44-48	Yes
3822	-	First or only inlay per arch	01	02	£10.15	£8.12	No	-	Yes
3828	-	Post-retained diaphragm (non-precious metal)	01	32	£64.50	£51.60	Yes	All teeth	Yes
3829	-	Gold coping (60% or more fine gold)	01	32	£50.70	£40.56	Yes	All teeth	Yes
3830	-	Gold coping (precious metal)	01	32	£32.75	£26.20	Yes	All teeth	Yes
3826	-	Post-retained diaphragm (60% or more fine gold)	01	32	£93.20	£74.56	Yes	All teeth	Yes
3827	-	Post-retained diaphragm (precious metal)	01	32	£75.70	£60.56	Yes	All teeth	Yes

Fee Code	Fee Suffix	Item Description	Qualifier Min	Qualifier Max	Dentist Fee	Patient's Charge	Tooth Specific Item	Teeth	Prior Approval Required
3838	-	Indirect composite/porcelain onlay	01	32	£131.30	£105.04	Yes	All teeth	Yes
3839	-	60% or more fine gold onlay	01	32	£159.60	£127.68	Yes	All teeth	Yes
3840	-	Precious metal alloy onlay	01	32	£135.90	£108.72	Yes	All teeth	Yes
3841	-	Non precious metal alloy onlay	01	32	£121.15	£96.92	Yes	All teeth	Yes
3842	-	Ceramic onlay	01	32	£196.85	£157.48	Yes	All teeth	Yes
3902	-	Onlays: Indirect composite/porcelain	01	32	*(TBD)	*(TBD)	Yes	All teeth	Yes
3903	-	Onlays: 60% or more fine gold	01	32	*(TBD)	*(TBD)	Yes	All teeth	Yes
3904	-	Onlays: precious metal alloy	01	32	*(TBD)	*(TBD)	Yes	All teeth	Yes
3905	-	Metal acid etch inlay	01	32	*(TBD)	*(TBD)	Yes	All teeth	Yes

\*(TBD) Fee code to be determined by PSD

Fee Code	Fee Suffix	Item Description	Qualifier Min	Qualifier Max	Dentist Fee	Patient's Charge	Tooth Specific Item	Teeth	Prior Approval Required
3906	-	Removal of a post in exceptional circumstances <i>Prior to repair or replacement of existing restoration involving e.g. Masserann kit.</i>	01	32	*(TBD)	*(TBD)	Yes	All teeth	Yes
3907	-	Crown/bridge restorations and other laboratory-based items (where there is no predetermined fee available under items 17(I) or 18(E))	01	32	*(TBD)	*(TBD)	Yes	All teeth	Yes
3908	-	Repair of a crown/bridge involving soldering (where there is no predetermined fee available under items 17(J) or 18(H))	01	32	*(TBD)	*(TBD)	No	-	Yes

### Provision of Bridges

Fee Code	Fee Suffix	Item Description	Qualifier Min	Qualifier Max	Dentist Fee	Patient's Charge	Tooth Specific Item	Teeth	Prior Approval Required
1815	09	Bridge - laboratory constructed dovetail (one tooth)	-	-	£22.25	£17.80	No	-	No
1815	10	Bridge - laboratory constructed dovetail (two teeth)	-	-	£44.50	£35.60	No	-	No

\*(TBD) Fee code to be determined by PSD

Fee Code	Fee Suffix	Item Description	Qualifier Min	Qualifier Max	Dentist Fee	Patient's Charge	Tooth Specific Item	Teeth	Prior Approval Required
1841	29	Spring cantilever arm - 60% or more fine gold	-	-	£139.75	£111.80	No	-	Yes
1841	30	Spring cantilever arm - precious metal	-	-	£94.95	£75.96	No	-	Yes
1841	31	Spring cantilever arm - non-precious metal	-	-	£69.00	£55.20	No	-	Yes
1841	33	Burnout attachment - Tubelock attachment	-	-	£89.95	£71.96	No	-	Yes
1871	01	Removal or sectioning of a bridge prior to repair <i>Claimable only where part or all of the original bridge is to be retained.</i>	-	-	£29.65	£0.00	No	-	No
1871	07	Repair of precious metal bridge by rebonding porcelain of retainer &/or pontics One unit	-	-	£48.45	£0.00	No	-	No
1871	08	Repair of precious metal bridge by rebonding porcelain of retainer &/or pontics Two units	-	-	£72.80	£0.00	No	-	No

\*(TBD) Fee code to be determined by PSD

Fee Code	Fee Suffix	Item Description	Qualifier Min	Qualifier Max	Dentist Fee	Patient's Charge	Tooth Specific Item	Teeth	Prior Approval Required
1871	09	Repair of precious metal bridge by rebonding porcelain of retainer &/or pontics Three units	-	-	£96.80	£0.00	No	-	No
1871	14	Repair to porcelain in situ using special repair kit One unit	-	-	£32.25	£0.00	No	-	No
1871	15	Repair to porcelain in situ using special repair kit Two units	-	-	£48.45	£0.00	No	-	No
1871	16	Repair to porcelain in situ using special repair kit Three units	-	-	£64.50	£0.00	No	-	No
1871	23	Veneer of bridge repair (includes additional fee) <i>Repair of a bridge using a laboratory constructed porcelain veneer.</i>	-	-	£141.35	£0.00	No	-	No
1871	24	Dentine bonded core for bridges on root filled molars	-	-	£30.30	£0.00	No	-	No
1871	25	Insertion of 2 pin / screw / preformed posts + recementing original bridge	-	-	£53.90	£0.00	No	-	No

\*(TBD) Fee code to be determined by PSD

Fee Code	Fee Suffix	Item Description	Qualifier Min	Qualifier Max	Dentist Fee	Patient's Charge	Tooth Specific Item	Teeth	Prior Approval Required
1871	26	Insertion of 2 cast precious metal core + posts and recementing original bridge	-	-	£124.60	£0.00	No	-	No
1871	27	Insertion of 2 cast non-precious metal core+posts including Radix anchor and Kurer crown saver + recementing original bridge	-	-	£96.10	£0.00	No	-	No
1871	28	Insertion of 2 core+post prefabricated in non-precious metal + recementing original bridge	-	-	£78.85	£0.00	No	-	No
1872	01	Insertion of pin / screw / preformed post + recementing original bridge	-	-	£42.05	£0.00	Yes	All teeth	No
1873	01	Insertion of cast precious metal core + post & recementing original bridge	-	-	£78.10	£0.00	Yes	All teeth	No
1874	01	Insertion of non-precious metal core + post including Radix anchor & Kurer crown saver + recementing original bridge	-	-	£63.90	£0.00	Yes	All teeth	No
1875	01	Insertion of core + post prefabricated in non-precious metal + recementing original bridge	-	-	£55.10	£0.00	Yes	All teeth	No

\*(TBD) Fee code to be determined by PSD

Fee Code	Fee Suffix	Item Description	Qualifier Min	Qualifier Max	Dentist Fee	Patient's Charge	Tooth Specific Item	Teeth	Prior Approval Required
3907	-	Crown/bridge restorations and other laboratory-based items (where there is no predetermined fee available under items 17(I) or 18(E))	01	32	*(TBD)	*(TBD)	Yes	All teeth	Yes
3908	-	Repair of a crown/bridge involving soldering (where there is no predetermined fee available under items 17(J) or 18(H))	01	32	*(TBD)	*(TBD)	No	-	Yes

### Extractions of Special Difficulty and Other Oral surgery

Fee Code	Fee Suffix	Item Description	Qualifier Min	Qualifier Max	Dentist Fee	Patient's Charge	Tooth Specific Item	Teeth	Prior Approval Required
2221	39	Removal of Operculum	-	-	£27.60	£22.08	No	-	Yes
2221	41	Removal of Papilloma or Fibroma	-	-	£28.20	£22.56	No	-	Yes
2221	42	Removal of Mucocoele	-	-	£39.25	£31.40	No	-	Yes

\*(TBD) Fee code to be determined by PSD



Fee Code	Fee Suffix	Item Description	Qualifier Min	Qualifier Max	Dentist Fee	Patient's Charge	Tooth Specific Item	Teeth	Prior Approval Required
2222	-	Surgical exposure of unerupted canine or second premolar tooth - buccal flap, soft tissue only <i>Appropriate radiographs must be available.</i>	01	08	£28.20	£22.56	Yes	13,15, 23, 25,33, 35, 43,45,	Yes
2223	-	Surgical exposure of unerupted canine or second premolar tooth - palatal flap, soft tissue only <i>Appropriate radiographs must be available.</i>	01	08	£39.25	£31.40	Yes	13,15, 23, 25,33, 35, 43,45	Yes
2221	43	Closure of oro-antral communication by means of a buccal advancement flap	-	-	£59.10	£47.28	No	-	Yes
2221	44	Closure of oro-antral communication by means of a palatal flap	-	-	£70.05	£56.04	No	-	Yes
2221	45	Repair of lateral perforation in connection with items 1521/1541 <i>Appropriate radiographs must be available.</i>	-	-	£28.20	£22.56	No	-	Yes

\*(TBD) Fee code to be determined by PSD

Fee Code	Fee Suffix	Item Description	Qualifier Min	Qualifier Max	Dentist Fee	Patient's Charge	Tooth Specific Item	Teeth	Prior Approval Required
2224	-	Surgical exposure of unerupted canine or second premolar tooth - buccal flap, bone removal <i>Appropriate radiographs must be available.</i>	01	08	£50.05	£40.04	Yes	13,15, 23, 25,33, 35, 43,45	Yes
2225	-	Surgical exposure of unerupted canine or second premolar tooth - palatal flap, bone removal <i>Appropriate radiographs must be available.</i>	01	08	£59.10	£47.28	Yes	13,15, 23, 25,33, 35, 43,45	Yes
3855	-	Supply and bond non precious metal pad and chain	01	02	£49.70	£39.76	No	-	Yes
3856	-	Supply and bond precious metal pad and chain	01	02	£76.90	£61.52	No	-	Yes
3857	-	Bond pad and chain supplied by orthodontist	01	02	£28.20	£22.56	No	-	Yes
2226	-	Surgical removal of impacted canine or upper second premolar tooth - buccal flap, bone removal <i>Appropriate radiographs must be available.</i>	01	06	£59.10	£47.28	Yes	13,15, 23, 25,33, 43	Yes

\*(TBD) Fee code to be determined by PSD

Fee Code	Fee Suffix	Item Description	Qualifier Min	Qualifier Max	Dentist Fee	Patient's Charge	Tooth Specific Item	Teeth	Prior Approval Required
2227	-	Surgical removal of impacted canine or upper second premolar tooth - palatal flap, bone removal <i>Appropriate radiographs must be available.</i>	01	06	£70.05	£56.04	Yes	13,15,23,25,33,43	Yes
2228	-	Surgical removal of impacted lower second premolar tooth <i>Appropriate radiographs must be available.</i>	01	02	£70.05	£56.04	Yes	35,45	Yes
2221	46	Surgical removal of unerupted mesiodens, odontome or supernumerary tooth involving the raising of a surgical flap and bone removal <i>Appropriate radiographs must be available.</i>	-	-	£59.10	£47.28	No	-	Yes
2229	-	Coronectomy of a lower third molar tooth involving raising of a flap, bone removal and crown sectioning <i>Appropriate radiographs must be available.</i>	01	02	£59.10	£47.28	Yes	38,48	Yes

\*(TBD) Fee code to be determined by PSD

Fee Code	Fee Suffix	Item Description	Qualifier Min	Qualifier Max	Dentist Fee	Patient's Charge	Tooth Specific Item	Teeth	Prior Approval Required
3909	-	Hemisection of a tooth including all associated attention.	01	12	*(TBD)	*(TBD)	Yes	16-18 26-28 36-38 46-48	Yes
3996	01	Any other oral surgery procedures	-	-	*(TBD)	*(TBD)	No	-	Yes

## Sedation

Fee Code	Fee Suffix	Item Description	Qualifier Min	Qualifier Max	Dentist Fee	Patient's Charge	Tooth Specific Item	Teeth	Prior Approval Required
2561	05	Sedation for patients in capitation - treatment other than item 21 extraction. Where cost of treatment carried out under sedation at that visit is up to and including £10.00 <i>Where sedation is administered by a doctor or dentist other than the dentist carrying out the treatment.</i>	-	-	£32.25	£0.00	No	-	No

\*(TBD) Fee code to be determined by PSD

Fee Code	Fee Suffix	Item Description	Qualifier Min	Qualifier Max	Dentist Fee	Patient's Charge	Tooth Specific Item	Teeth	Prior Approval Required
2561	06	Sedation for patients in capitation - treatment other than item 21 extraction. Where cost of treatment carried out under sedation at that visit is from £10.01 to £25.00 <i>Where sedation is administered by a doctor or dentist other than the dentist carrying out the treatment.</i>	-	-	£59.10	£0.00	No	-	No
2561	07	Sedation for patients in capitation treatment other than Item 21 extraction. Where cost of treatment carried out under sedation at that visit is from £25.01 to £50.00 <i>Where sedation is administered by a doctor or dentist other than the dentist carrying out the treatment.</i>	-	-	£85.10	£0.00	No	-	No
2561	08	Sedation for patients in capitation treatment other than item 21 extraction. Where cost of treatment carried out under sedation at that visit is greater than £50.00 <i>Where sedation is administered by a doctor or dentist other than the dentist carrying out the treatment.</i>	-	-	£109.00	£0.00	No	-	No

\*(TBD) Fee code to be determined by PSD

Fee Code	Fee Suffix	Item Description	Qualifier Min	Qualifier Max	Dentist Fee	Patient's Charge	Tooth Specific Item	Teeth	Prior Approval Required
2563	01	Sedation in connection with treatment involving the preparation & fitting veneers, inlays, crowns or bridge retainers <i>Where sedation is administered by a doctor or dentist other than the dentist carrying out the treatment.</i>	-	-	£32.25	£25.80	No	-	No
3851	01	Hypnosis first or only visit	-	-	£30.30	£24.24	No	-	Yes
3852	01	Hypnosis second visit	-	-	£15.20	£12.16	No	-	Yes
3853	01	Hypnosis third or subsequent visit(s)	-	-	£7.45	£5.96	No	-	Yes

### Prostheses, Obturators and other (Non-Orthodontic) Appliances

Fee Code	Fee Suffix	Item Description	Qualifier Min	Qualifier Max	Dentist Fee	Patient's Charge	Tooth Specific Item	Teeth	Prior Approval Required
3824	-	Relining/rebasing or provision/renewal of soft lining with material polymerised in the mouth, including tissue conditioner	01	02	£39.25	£31.40	No	-	Yes

\*(TBD) Fee code to be determined by PSD

Fee Code	Fee Suffix	Item Description	Qualifier Min	Qualifier Max	Dentist Fee	Patient's Charge	Tooth Specific Item	Teeth	Prior Approval Required
3825	01	Provision of a custom incisal guide table	-	-	£32.50	£26.00	No	-	Yes
3911	-	Use of high impact acrylic in a denture	01	02	*(TBD)	*(TBD)	No	-	Yes

### Repairs and Alterations to Dentures

Fee Code	Fee Suffix	Item Description	Qualifier Min	Qualifier Max	Dentist Fee	Patient's Charge	Tooth Specific Item	Teeth	Prior Approval Required
2811	01	Refixing or replacement of first facing	-	-	£21.10	£0.00	No	-	No
2811	02	Refixing or replacement of each additional facing	-	-	£7.30	£0.00	No	-	No
2811	03	Refixing or replacement of facing (max. per denture)	-	-	£48.15	£0.00	No	-	No
2811	07	Soldering or welding repairs (stainless steel or chrome cobalt)	-	-	£28.80	£0.00	No	-	No
2841	01	Simple adjustments to acrylic element	-	-	£14.90	£11.92	No	-	No
2841	04	Denture bearing 1-3 teeth (stripping & reassembling the polymer & teeth)	-	-	£29.10	£23.28	No	-	No

\*(TBD) Fee code to be determined by PSD

Fee Code	Fee Suffix	Item Description	Qualifier Min	Qualifier Max	Dentist Fee	Patient's Charge	Tooth Specific Item	Teeth	Prior Approval Required
2841	05	Denture bearing 4-8 teeth (stripping & reassembling the polymer & teeth)	-	-	£38.65	£30.92	No	-	No
2841	06	Denture bearing 9 or more teeth (stripping & reassembling the polymer & teeth)	-	-	£45.95	£36.76	No	-	No
2841	07	Full denture (stripping & reassembling the polymer & teeth)	-	-	£29.65	£23.72	No	-	No
2871	14	Reconstruction of a metal denture (stripping fee)	-	-	£29.65	£23.72	No	-	No
2871	15	Soldering or welding (stainless steel or chrome cobalt)	-	-	£28.80	£23.04	No	-	No
2880	01	Additional clasp (must be claimed with 2880 02)	-	-	£41.45	£33.16	No	-	No
2880	02	1 Repair (fracture) balance fee (must be claimed with 2880 01)	-	-	£17.70	£0.00	No	-	No
2880	04	Repair (fracture) balance fee (must be claimed with 2882 01)	-	-	£21.10	£0.00	No	-	No

\*(TBD) Fee code to be determined by PSD



Fee Code	Fee Suffix	Item Description	Qualifier Min	Qualifier Max	Dentist Fee	Patient's Charge	Tooth Specific Item	Teeth	Prior Approval Required
2880	05	Additional gum (must be claimed with 2880 06)	-	-	£34.90	£27.92	No	-	No
2880	06	1 Repair (fracture) balance fee (must be claimed with 2880 05)	-	-	£21.10	£0.00	No	-	No
2880	07	Additional clasp (must be claimed with 2880 08)	-	-	£41.45	£33.16	No	-	No
2880	08	2 or more repairs balance fee (must be claimed with 2880 07)	-	-	£17.70	£0.00	No	-	No
2880	10	2 or more repairs balance fee (must be claimed with 2883 01)	-	-	£24.30	£0.00	No	-	No
2880	11	Additional gum (must be claimed with 2880 12)	-	-	£34.90	£27.92	No	-	No
2880	12	2 or more repairs balance fee (must be claimed with 2880 11)	-	-	£24.30	£0.00	No	-	No
2880	13	Additional clasp (must be claimed with 2880 14)	-	-	£41.45	£33.16	No	-	No
2880	14	Refix clasp balance fee (must be claimed with 2880 13)	-	-	£17.70	£0.00	No	-	No

\*(TBD) Fee code to be determined by PSD

Fee Code	Fee Suffix	Item Description	Qualifier Min	Qualifier Max	Dentist Fee	Patient's Charge	Tooth Specific Item	Teeth	Prior Approval Required
2880	16	Refix clasp balance fee (must be claimed with 2881 01)	-	-	£24.30	£0.00	No	-	No
2880	17	Additional gum (must be claimed with 2880 18)	-	-	£34.90	£27.92	No	-	No
2880	18	Refix clasp balance fee (must be claimed with 2880 17)	-	-	£24.30	£0.00	No	-	No
2880	19	Any 2 additions with or without repairs (max)	-	-	£59.10	£47.28	No	-	No
2881	01	Additional tooth (must be claimed with 2880 16)	-	-	£34.90	£27.92	Yes	All teeth	No
2882	01	Additional tooth (must be claimed with 2880 04)	-	-	£34.90	£27.92	Yes	All teeth	No
2883	01	Additional tooth (must be claimed with 2880 10)	-	-	£34.90	£27.92	Yes	All teeth	No

\*(TBD) Fee code to be determined by PSD

## Obturator, Splints and Similar Appliances other than Orthodontic Appliances

Fee Code	Fee Suffix	Item Description	Qualifier Min	Qualifier Max	Dentist Fee	Patient's Charge	Tooth Specific Item	Teeth	Prior Approval Required
2901	01	Obturator - fee per case, in addition to appropriate denture fee	-	-	£83.10	£66.48	No	-	No
2926	07	Provision of Maryland splint 2 units <i>Splinting in connection with external trauma.</i>	-	-	£100.20	£80.16	No	-	No
2926	08	Provision of Maryland splint 3 units <i>Splinting in connection with external trauma.</i>	-	-	£150.25	£120.20	No	-	No
2926	09	Provision of Maryland splint 4 units <i>Splinting in connection with external trauma.</i>	-	-	£200.40	£160.32	No	-	No
2926	10	Provision of Maryland splint 5 or more units <i>Splinting in connection with external trauma.</i>	-	-	£250.50	£200.40	No	-	No
2942	-	Provision of a laboratory processed pressure-formed soft occlusal appliance	01	02	£46.70	£37.36	No	-	Yes

\*(TBD) Fee code to be determined by PSD

Fee Code	Fee Suffix	Item Description	Qualifier Min	Qualifier Max	Dentist Fee	Patient's Charge	Tooth Specific Item	Teeth	Prior Approval Required
2991	01	Denture base polymer appliance carrying no teeth	-	-	£107.00	£85.60	No	-	Yes
2991	46	Prosthetic, as an alternative to suturing, to cover oral- antral fistula	-	-	£73.95	£59.16	No	-	Yes
2991	47	Full upper or lower training base	-	-	£65.85	£52.68	No	-	Yes

## Repairs to Orthodontic Appliances

Fee Code	Fee Suffix	Item Description	Qualifier Min	Qualifier Max	Dentist Fee	Patient's Charge	Tooth Specific Item	Teeth	Prior Approval Required
3239	80	Lower repair of a fixed appliance involving the replacement of 2 or more bracket bands/archwires	-	-	*(TBD)	*(TBD)	No	-	No
3240	80	Upper repair of a fixed appliance involving the replacement of 2 or more bracket bands/archwires	-	-	*(TBD)	*(TBD)	No	-	No
3291	02	Replacement of one half of twin block functional appliance	-	-	£81.30	£0.00	No	-	Yes
3291	03	Reset a twin block functional appliance	-	-	£50.05	£0.00	No	-	Yes

\*(TBD) Fee code to be determined by PSD

Fee Code	Fee Suffix	Item Description	Qualifier Min	Qualifier Max	Dentist Fee	Patient's Charge	Tooth Specific Item	Teeth	Prior Approval Required
3291	21	Cemented inclined plane (passive traction or deterrent)	-	-	£87.30	£69.84	No	-	Yes
3291	22	Space maintainer (passive traction or deterrent)	-	-	£113.85	£91.08	No	-	Yes
3291	25	Bond (recementing bonded retainer)	-	-	£13.65	£10.92	No	-	Yes
3291	26	Bond (Recementing bonded retainer) <i>2 or more bonds</i>	-	-	£27.15	£21.72	No	-	YES
3291	82	Enamel stripping/discing per visit (one visit)	-	-	£10.40	£8.32	No	-	Yes
3291	83	Enamel stripping/discing per visit (two visits)	-	-	£20.70	£16.56	No	-	Yes
3291	84	Enamel stripping/discing per visit (three or more visits)	-	-	£30.95	£24.76	No	-	Yes
3291	41	Cephalometric not taken by the dentist providing analysis	-	-	£11.60	£9.28	No	-	Yes
3291	81	Hyrax Screw (rapid maxillary expansion)	-	-	£233.80	£187.04	No	-	Yes

\*(TBD) Fee code to be determined by PSD

## Orthodontic Incomplete Fees

Fee Code	Fee Suffix	Item Description	Qualifier Min	Qualifier Max	Dentist Fee	Patient's Charge	Tooth Specific Item	Teeth	Prior Approval Required
3994	01	Balance fee for resumed treatments - where an incomplete fee has been claimed	-	-	TBD	TBD	No	-	Yes

## Orthodontic Discretionary Fees

Fee Code	Fee Suffix	Item Description	Qualifier Min	Qualifier Max	Dentist Fee	Patient's Charge	Tooth Specific Item	Teeth	Prior Approval Required
3861	01	eOrtho transfer case	-	-	*(TBD)	*(TBD)	No	-	Yes
3913	01	Balance fee for Continuation Case	-	-	*(TBD)	*(TBD)	No	-	No *Prior Approval required if changing treatment plan from original approval
3862	01	GIC Glass Ionomer Occlusal Blocks	-	-	£37.65	£30.12	No	-	Yes
3863	01	Bite Turbos	-	-	£37.65	£30.12	No	-	Yes

\*(TBD) Fee code to be determined by PSD

Fee Code	Fee Suffix	Item Description	Qualifier Min	Qualifier Max	Dentist Fee	Patient's Charge	Tooth Specific Item	Teeth	Prior Approval Required
3914	01	Debonding Single Arch	-	-	TBD	TBD	No	-	No
3915	01	Debonding Two Arches	-	-	TBD	TBD	No	-	No
9001	01	Reapproval for change to treatment plan, not resulting in a change to the total of fees on the originally approved claim	-	-	TBD	TBD	No	-	Yes

## Interim Payment

Fee Code	Fee Suffix	Item Description	Qualifier Min	Qualifier Max	Dentist Fee	Patient's Charge	Tooth Specific Item	Teeth	Prior Approval Required
3291	09	Interim payment	-	-	£155.00	£0.00	No	-	No
3291	10	Interim payment	-	-	£235.00	£0.00	No	-	No
3291	11	Interim payment	-	-	£295.00	£0.00	No	-	No

\*(TBD) Fee code to be determined by PSD

## Interim Payment Recovery

Fee Code	Fee Suffix	Item Description	Qualifier Min	Qualifier Max	Dentist Fee	Patient's Charge	Tooth Specific Item	Teeth	Prior Approval Required
3291	91	Interim payment	-	-	-£155.00	£0.00	No	-	No
3291	92	Interim payment	-	-	-£235.00	£0.00	No	-	No
3291	93	Interim payment	-	-	-£295.00	£0.00	No	-	No

## Miscellaneous Treatments

Fee Code	Fee Suffix	Item Description	Qualifier Min	Qualifier Max	Dentist Fee	Patient's Charge	Tooth Specific Item	Teeth	Prior Approval Required
3621	01	Occlusal Equilibration	-	-	£28.60	£22.88	No	-	Yes
3912	01	Incomplete treatment where there is no SDR fee	-	-	*(TBD)	*(TBD)	No	-	Yes
3997	01	Chairside factor: additional time necessarily spent with a patient	-	-	*(TBD)	*(TBD)	No	-	Yes
3998	01	Fee for necessary treatment involving laboratory expenses not covered by the SDR	-	-	*(TBD)	*(TBD)	No	-	Yes

\*(TBD) Fee code to be determined by PSD



Fee Code	Fee Suffix	Item Description	Qualifier Min	Qualifier Max	Dentist Fee	Patient's Charge	Tooth Specific Item	Teeth	Prior Approval Required
3999	01	Fee for: Any other treatment	-	-	*(TBD)	*(TBD)	No	-	Yes
3910	-	Precision attachments	01	32	*(TBD)	*(TBD)	Yes	All teeth	Yes

### Any other Treatment

For treatment necessary to secure and maintain oral health, but not included elsewhere in this fee scale, predetermined fee items.

Fee Code	Fee Suffix	Item Description	Qualifier Min	Qualifier Max	Dentist Fee	Patient's Charge	Tooth Specific Item	Teeth	Prior Approval Required
3832	-	Re-implantation of a tooth removed by trauma and treatment to root canal	01	12	£30.30	£24.24	Yes	11-13 21-23 31-33 41-43	Yes
3833	-	Attention to socket - replacing tooth & temporary wiring or splinting - per unit	01	12	£22.25	£17.80	Yes	11-13 21-23 31-33 41-43	Yes

\*(TBD) Fee code to be determined by PSD

Fee Code	Fee Suffix	Item Description	Qualifier Min	Qualifier Max	Dentist Fee	Patient's Charge	Tooth Specific Item	Teeth	Prior Approval Required
3834	-	Attention to socket - replacing tooth & temporary wiring or splinting - per unit + fee for temporary splint	01	12	£30.50	£24.40	Yes	11-13 21-23 31-33 41-43	Yes
3835	-	Use of a natural crown as a bridge pontic – sectioning crown from root <i>Normally claimed in conjunction with codes 3836 and 3837.</i>	01	12	£6.75	£5.40	Yes	11-13 21-23 31-33 41-43	Yes
3836	-	Use of a natural crown as a bridge pontic - attention to pulp chamber <i>Normally claimed in conjunction with codes 3835 and 3837.</i>	01	12	£11.25	£9.00	Yes	11-13 21-23 31-33 41-43	Yes
3837	-	Use of a natural crown as a bridge pontic - acid etch splinting of teeth - per splint <i>Normally claimed in conjunction with codes 3835 and 3836.</i>	01	04	£44.80	£35.84	No	-	Yes
3843	-	Abrasion of enamel opacities in vital teeth, per arch	01	02	£61.15	£48.92	No	-	Yes

\*(TBD) Fee code to be determined by PSD

Fee Code	Fee Suffix	Item Description	Qualifier Min	Qualifier Max	Dentist Fee	Patient's Charge	Tooth Specific Item	Teeth	Prior Approval Required
3847	-	Carbon fibre posts	01	32	£45.30	£36.24	Yes	All teeth	Yes
3848	-	Internal bleaching of a non-vital tooth Radiograph required and colour photograph if available.	01	20	£45.45	£36.36	Yes	11-15 21-25 31-35 41-45	Yes
3855	-	Supply and bond non precious metal pad and chain	01	02	£49.70	£39.76	No	-	Yes
3856	-	Supply and bond precious metal pad and chain	01	02	£76.90	£61.52	No	-	Yes
3857	-	Bond pad and chain supplied by orthodontist	01	02	£28.20	£22.56	No	-	Yes
3992	01	Discretionary Fee for any other treatment not covered under occasional or extended occasional treatment	-	-	TBD	TBD	No	-	Yes

\*(TBD) Fee code to be determined by PSD

## Radiographic Examination and Radiological Report (Occasional Treatment)

Fee Code	Fee Suffix	Item Description	Qualifier Min	Qualifier Max	Dentist Fee	Patient's Charge	Tooth Specific Item	Teeth	Prior Approval Required
4930	01	OPT analysis <i>Should only be claimed where OPT has been taken at a different location. Same dentist rule applies.</i>	-	-	£7.90	£6.32	No	-	No

## Inlays, Crowns and Bridges (Occasional Treatment)

Fee Code	Fee Suffix	Item Description	Qualifier Min	Qualifier Max	Dentist Fee	Patient's Charge	Tooth Specific Item	Teeth	Prior Approval Required
5132	01	Insertion of pin/screw/preformed post + recementing original bridge	-	-	£42.75	£0.00	Yes	All teeth	No
5133	01	Insertion of cast precious metal core + post & recementing original bridge	-	-	£78.10	£0.00	Yes	All teeth	No
5134	01	Insertion of non-precious metal core + post including Radix anchor & Kurer Crown Saver + recementing original bridge	-	-	£63.90	£0.00	Yes	All teeth	No
5135	01	Insertion of core + post prefabricated in non-precious metal + recementing original bridge	-	-	£55.10	£0.00	Yes	All teeth	No

\*(TBD) Fee code to be determined by PSD

Fee Code	Fee Suffix	Item Description	Qualifier Min	Qualifier Max	Dentist Fee	Patient's Charge	Tooth Specific Item	Teeth	Prior Approval Required
5131	01	Removal of a bridge <i>Claimable only where part or all of the original bridge is to be retained.</i>	-	-	£29.65	£0.00	No	-	No
5131	02	Repair to porcelain in situ using special repair kit One unit	-	-	£32.20	£0.00	No	-	No
5131	03	Repair to porcelain in situ using special repair kit Two units	-	-	£48.45	£0.00	No	-	No
5131	04	Repair to porcelain in situ using special repair kit Three units	-	-	£64.50	£0.00	No	-	No

### Repairs and Alterations to Dentures and other Appliances

Fee Code	Fee Suffix	Item Description	Qualifier Min	Qualifier Max	Dentist Fee	Patient's Charge	Tooth Specific Item	Teeth	Prior Approval Required
5511	01	Refixing or replacement to metal dentures	-	-	£21.10	£0.00	No	-	No
5541	05	Adjusting a denture (other)	-	-	£29.10	£23.28	No	-	No
5571	10	Stainless steel or chrome cobalt (Soldering or welding additions)	-	-	£28.20	£23.04	No	-	No

\*(TBD) Fee code to be determined by PSD

Fee Code	Fee Suffix	Item Description	Qualifier Min	Qualifier Max	Dentist Fee	Patient's Charge	Tooth Specific Item	Teeth	Prior Approval Required
5560	01	1 Additional clasp	-	-	£41.45	£33.16	No	-	No
5560	02	1 Repair balance fee	-	-	£17.70	£0.00	No	-	No
5560	04	1 Repair balance fee	-	-	£21.10	£0.00	No	-	No
5560	05	1 Additional gum	-	-	£34.90	£27.92	No	-	No
5560	06	1 Repair balance fee	-	-	£21.10	£0.00	No	-	No
5560	07	1 Additional clasp	-	-	£41.45	£33.16	No	-	No
5560	08	2 or more repairs balance fee	-	-	£17.70	£0.00	No	-	No
5560	10	2 or more repairs balance fee	-	-	£24.30	£0.00	No	-	No
5560	11	1 additional gum	-	-	£34.90	£27.92	No	-	No
5560	12	2 or more repairs balance fee	-	-	£24.30	£0.00	No	-	No
5560	13	1 Additional clasp	-	-	£41.45	£33.16	No	-	No
5560	14	Refix clasp balance fee	-	-	£17.70	£0.00	No	-	No
5560	16	Refix clasp balance fee	-	-	£24.30	£0.00	No	-	No

Fee Code	Fee Suffix	Item Description	Qualifier Min	Qualifier Max	Dentist Fee	Patient's Charge	Tooth Specific Item	Teeth	Prior Approval Required
5560	17	1 Additional gum	-	-	£34.90	£27.92	No	-	No
5560	18	Refix clasp balance fee	-	-	£24.30	£0.00	No	-	No
5560	19	Any 2 additions with or without repairs	-	-	£59.10	£47.28	No	-	No
5567	01	1 Additional tooth	-	-	£34.90	£27.92	Yes	All teeth	No
5568	01	1 Additional tooth	-	-	£34.90	£27.92	Yes	All teeth	No
5569	01	1 Additional tooth	-	-	£34.90	£27.92	Yes	All teeth	No

### Occasional Orthodontic Treatment

Fee Code	Fee Suffix	Item Description	Qualifier Min	Qualifier Max	Dentist Fee	Patient's Charge	Tooth Specific Item	Teeth	Prior Approval Required
5591	01	Recement one band (other repairs or adjustments to a fixed or removable appliance)	-	-	£13.65	£0.00	No	-	No

\*(TBD) Fee code to be determined by PSD

Fee Code	Fee Suffix	Item Description	Qualifier Min	Qualifier Max	Dentist Fee	Patient's Charge	Tooth Specific Item	Teeth	Prior Approval Required
5591	02	Each additional band (other repairs or adjustments to a fixed or removable appliance)	-	-	£13.65	£0.00	No	-	No
5591	03	Removal of a bonded retainer (other repairs or adjustments to a fixed or removable appliance)	-	-	£33.85	£0.00	No	-	No
5591	04	Removal of ligatures (other repairs or adjustments to a fixed or removable appliance)	-	-	£14.90	£0.00	No	-	No
5591	05	Removal of a band or spring	-	-	£14.90	£0.00	No	-	No
5591	06	Removal of a whole fixed appliance	-	-	£67.90	£0.00	No	-	No
5591	07	Removal of both arches (maximum fee)	-	-	£101.75	£0.00	No	-	No
5591	08	Adjustment of fixed/removable appliance	-	-	£14.90	£0.00	No	-	No
5591	09	Relining/rebasing an appliance	-	-	£50.05	£40.04	No	-	No
5591	10	1 Bond (recementing bonded retainers)	-	-	£13.65	£10.92	No	-	No

\*(TBD) Fee code to be determined by PSD



Fee Code	Fee Suffix	Item Description	Qualifier Min	Qualifier Max	Dentist Fee	Patient's Charge	Tooth Specific Item	Teeth	Prior Approval Required
5591	11	2 or more bonds (recementing bonded retainers)	-	-	£27.15	£21.72	No	-	No
5591	12	1 visit (enamel stripping /discing)	-	-	£10.40	£8.32	No	-	No
5591	13	2 visits (enamel striping /discing)	-	-	£20.60	£16.48	No	-	No
5591	14	Maximum (enamel stripping/discing)	-	-	£31.05	£24.84	No	-	No

### Any other Incomplete Treatment

Fee Code	Fee Suffix	Item Description	Qualifier Min	Qualifier Max	Dentist Fee	Patient's Charge	Tooth Specific Item	Teeth	Prior Approval Required
3860	-	Incomplete cast metal post and core	01	04	£38.50	£30.80	No	-	Yes
3995	01	Balance fee for resumed treatments - where an incomplete fee has been claimed	-	-	TBD	TBD	No	-	Yes
7301	01	Partial scaling 18 years or over at beginning of course of treatment	-	-	£10.90	£8.72	No	-	No
7301	99	Any other Incomplete Treatment	-	-	TBD	TBD	No	-	Yes

\*(TBD) Fee code to be determined by PSD



## Contact

**Practitioner Services**

**0131 275 6300**

**[nss.psddental@nhs.scot](mailto:nss.psddental@nhs.scot)**